



Turner Avenue, TW2

£849,000

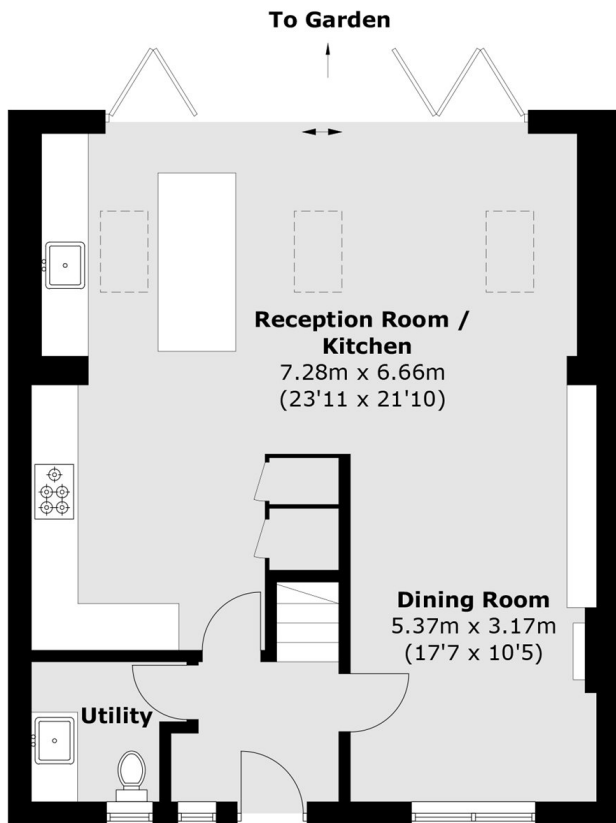
This immaculate family home has been extended by the current owners and has a large open plan kitchen living area with plenty of room for relaxing and entertaining and a separate utility room with downstairs loo. There are four bedrooms, two bathrooms, off street parking and a private garden.

Turner Avenue is situated within easy reach of many bus routes which will take you into Twickenham, Richmond and Kingston town centres. Fulwell train station is just 0.4 Miles away and the area is renowned for its excellent state and private schools.

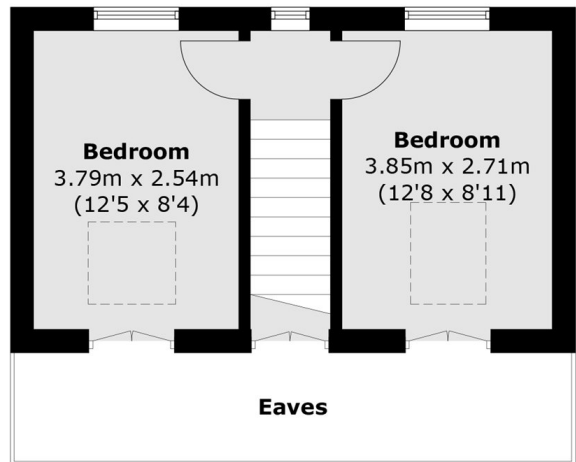
Features

- Four Bedrooms
- Two Bathrooms
- Off Street Parking
- Utility Room
- Extended & Loft Converted
- Close To Waldegrave Girls School

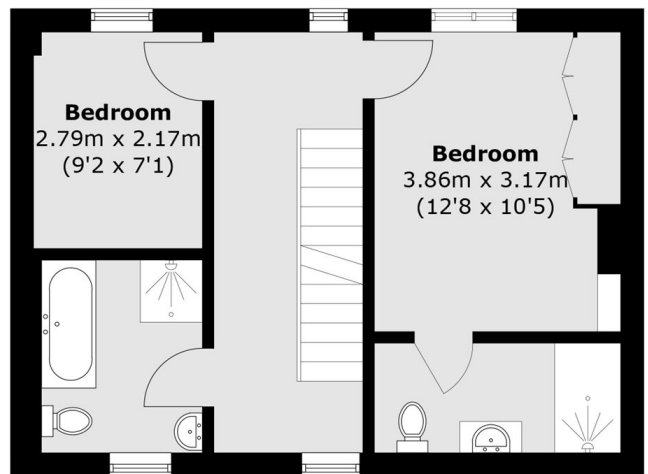
Turner Avenue, Twickenham, TW2



Ground Floor



Second Floor



First Floor

Total area (approx.): 129.3 sq. m (1,391.8 sq. ft)
(Excluding Eaves)