



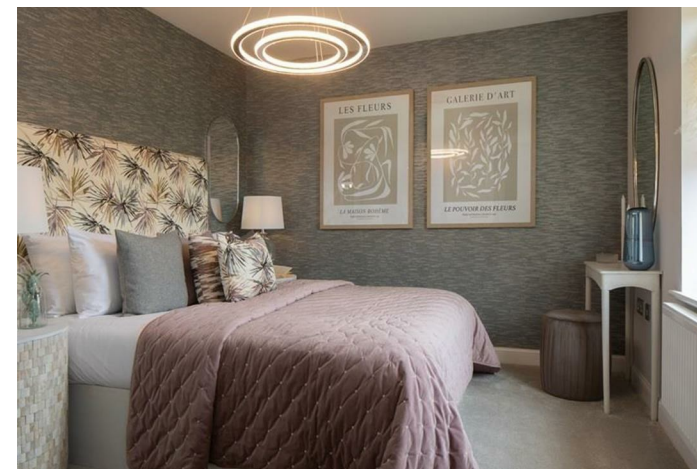
Plot 92, The Hadley, Rose Place, Welshpool Road, Bicton Heath, Shrewsbury, SY3 5BU
£385,000



Plot 92, The Hadley, Rose Place, Welshpool Road, Bicton Heath, Shrewsbury, SY3
£385,000

The Hadley is the perfect first home for growing young families. The heart of this home is the open plan kitchen-diner with French doors to the South-West facing garden. You'll love the spacious lounge and handy utility room too. Upstairs, the main bedroom has a luxurious en-suite shower, a further double bedroom, single/study and a family bathroom.

Description



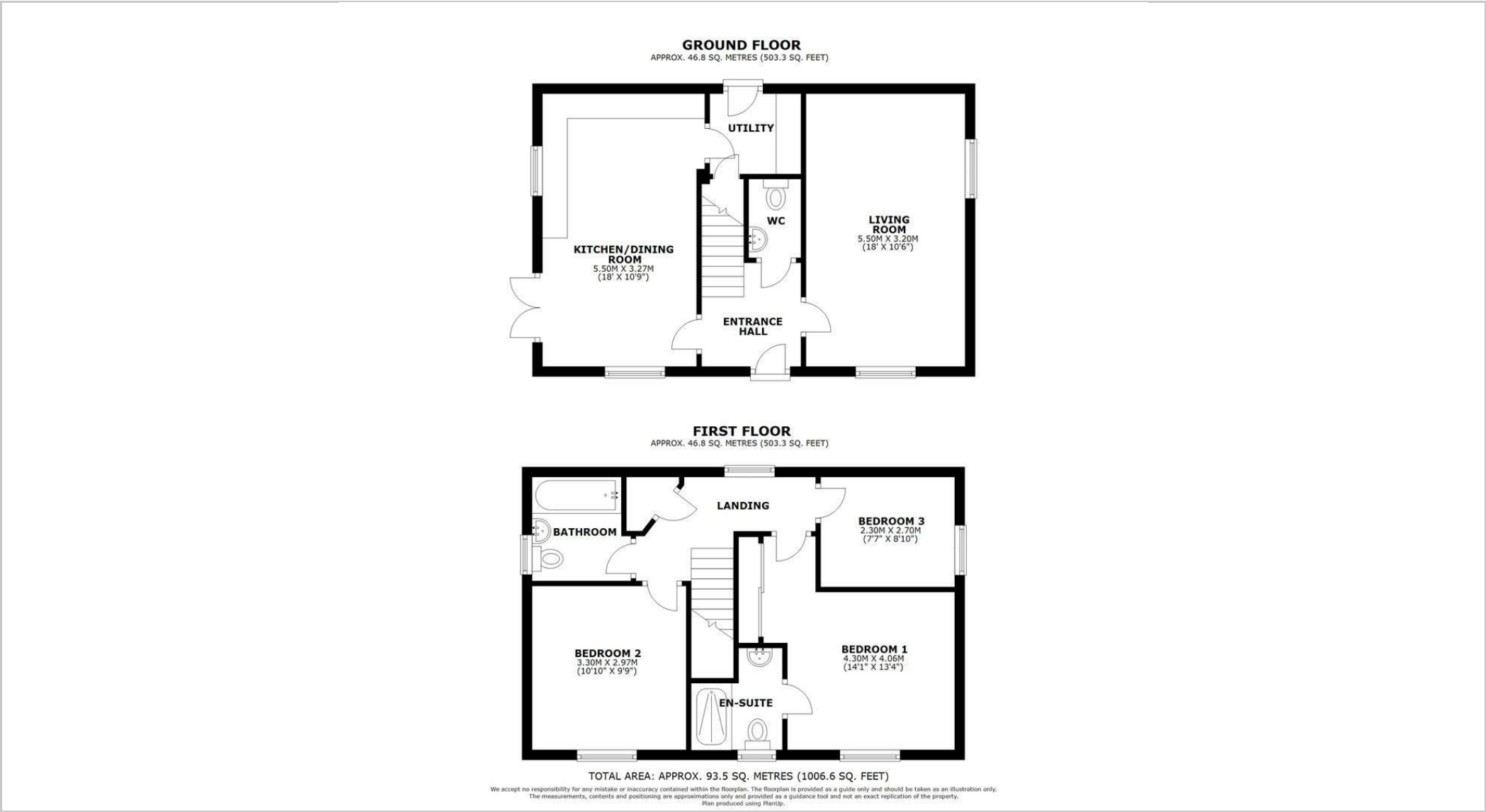
null

Council Tax Band: New Build

Available:

EPC:

Floor Plans



These particulars, whilst believed to be accurate are set out as a general outline only for guidance and do not constitute any part of an offer or contract. Intending purchasers should not rely on them as statements of representation of fact, but must satisfy themselves by inspection or otherwise as to their accuracy. No person in this firms employment has the authority to make or give any representation or warranty in respect of the property.