



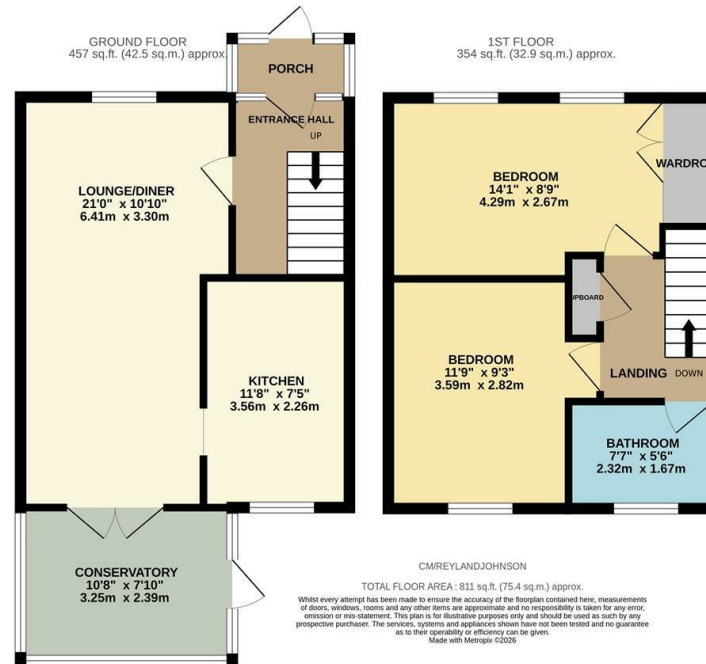
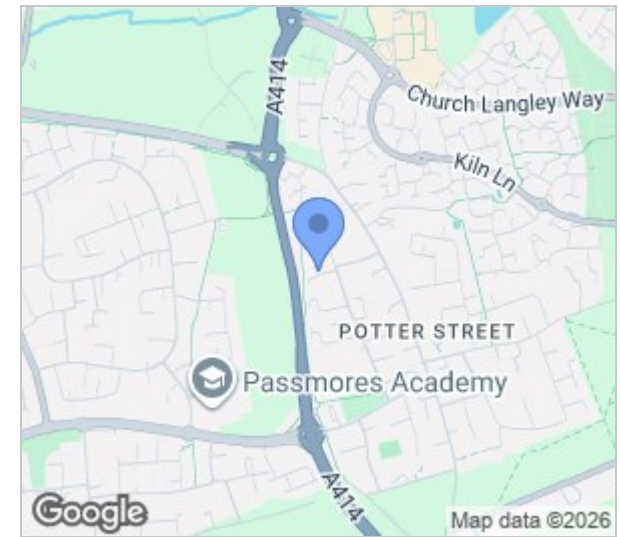
Carters Mead, Harlow, CM17 9ES
Guide Price £300,000

2 1 2

Carters Mead, Harlow, CM17 9ES

Guide Price £300,000 to £315,000

Located in a quiet cul-de-sac with potential for a driveway (subject to planning) is this two double bedroom end terrace family home. Inside there is a porch leading to an entrance hallway, a large lounge/diner, kitchen with a range of fitted wall and base units and a conservatory, whilst upstairs there are two large double bedrooms and a family bathroom with a white three piece suite. The rear garden is mainly laid to lawn with a patio area and side access, with the front of the property being used as a driveway, though the kerb hasn't been dropped (this can be done subject to planning). Carters Mead is located in the popular CM17 area of Potter Street, with local schools, shops and open fields within walking distance, plus the M11 is close by.



Energy Efficiency Rating		
	Current	Potential
Very energy efficient - lower running costs		
(92 plus) A		
(81-91) B		
(69-80) C		
(55-68) D		
(39-54) E		
(21-38) F		
(1-20) G		
Not energy efficient - higher running costs		
England & Wales	EU Directive 2002/91/EC	

Environmental Impact (CO ₂) Rating		
	Current	Potential
Very environmentally friendly - lower CO ₂ emissions		
(92 plus) A		
(81-91) B		
(69-80) C		
(55-68) D		
(39-54) E		
(21-38) F		
(1-20) G		
Not environmentally friendly - higher CO ₂ emissions		
England & Wales	EU Directive 2002/91/EC	

These particulars, whilst believed to be accurate are set out as a general outline only for guidance and do not constitute any part of an offer or contract. Intending purchasers should not rely on them as statements of representation of fact, but must satisfy themselves by inspection or otherwise as to their accuracy. No person in this firm's employment has the authority to make or give any representation or warranty in respect of the property.