

## Shepherds Hill, N6

£475,000

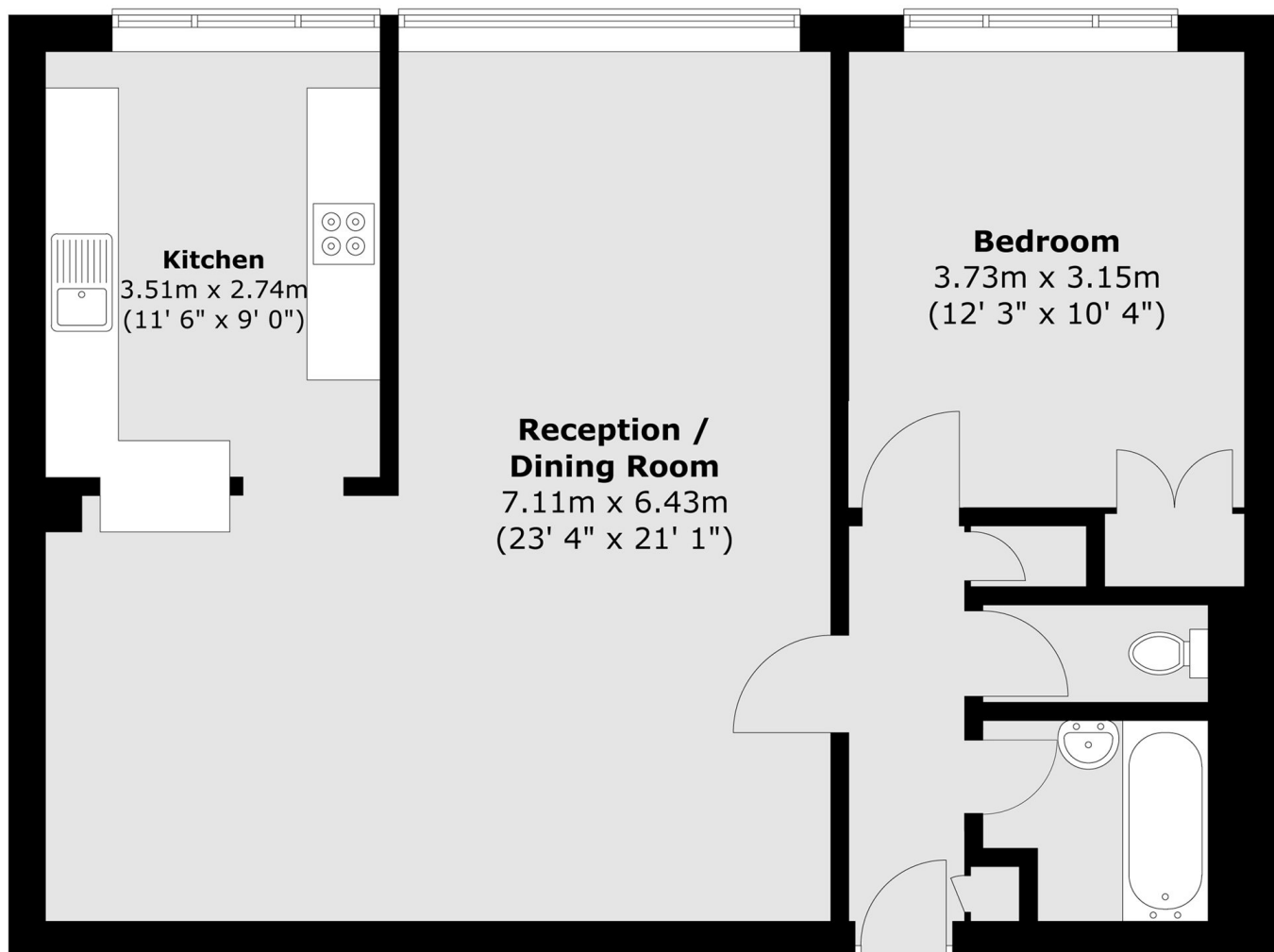
Situated in this popular block, an exceptionally large one bedroom flat with extensive south facing communal gardens .

The property is well placed, close to the local parkland, transport connections including Highgate underground and the wide range of shopping and café society at The Broadway.

### Features

- Double Bedroom
- Kitchen
- Bathroom
- Large Communal Gardens
- Passenger Lift
- Garage

# Shepherds Hill, London, N6



Total area (approx.) : 70.6 sq. m (760 sq. ft)