

**Dacre Park**

Guide Price £450,000

🛏 2 🚿 1 🚗 1



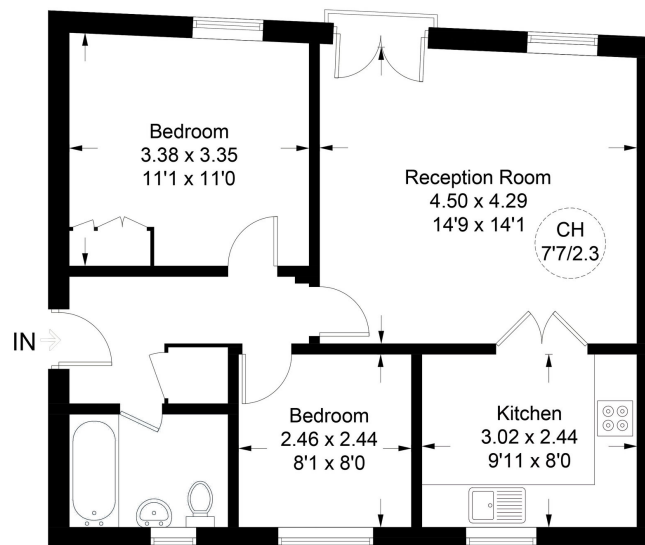
Set within the popular Forge House development, this beautifully presented first-floor apartment offers bright, modern living just a short stroll from the heart of Blackheath Village. With well-balanced accommodation, plenty of natural light, and an unbeatable location, this is a home perfectly suited to everyday London living.

### Key Features

- Please Quote HM1127 For All Enquiries
- Guide Price £450,000-£500,000
- Two Bedroom First Floor Modern Apartment
- Bright Open-Plan Living & Dining Space
- Juliet Balcony Via French Doors
- Contemporary Fitted Kitchen With Integrated Appliances
- Approx. 603 Sq Ft Accommodation
- 0.6 Mile Walk To Blackheath Station
- Moments From Blackheath Village
- Exclusive Open Day – Saturday 16th May | Viewings Strictly By Appointment

#### Dacre Park

Approximate Area = 56.0 sq m / 603 sq ft  
Including Limited Use Area (0.7 sq m / 7 sq ft)



**First Floor**

Illustration for identification purposes only, not for valuation purposes, measurements are approximate, not to scale.