



The Green, W5

£495,000

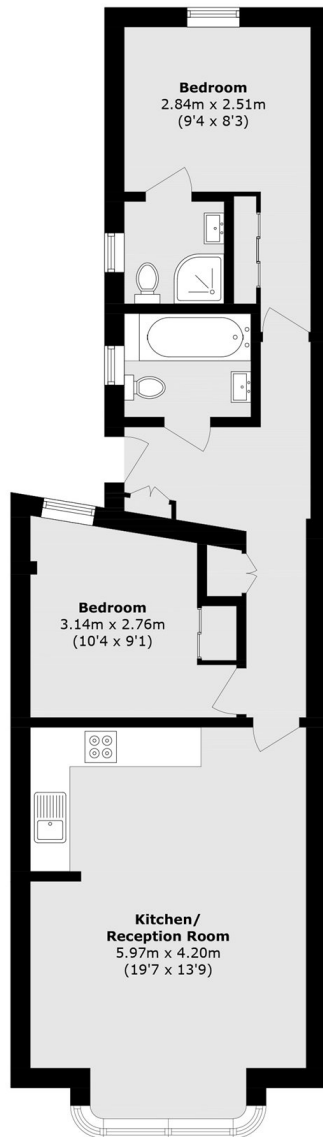
A bright and spacious first-floor apartment featuring a generous open-plan living, kitchen and dining area, the perfect space for entertaining. Unusually there are also two well-proportioned double bedrooms, both with built-in storage, one benefits from an en-suite. A separate bathroom completes the accommodation. Further benefits include a long lease and low service charges.

Ideally located opposite Ealing Green and moments from Walpole Park, this centrally positioned home offers the best of both vibrant local amenities and green open spaces. Ealing Broadway station is just a short walk away, providing excellent transport links into central London.

Features

- First Floor
- Two Double Bedrooms
- Two Bathrooms
- Long Lease 115 Years
- Low Service Charges
- Central Location

The Green, London, W5



First Floor

Total area (approx.): 58.2 sq. m (626.5 sq. ft)