



Pears Road, TW3

£575,000

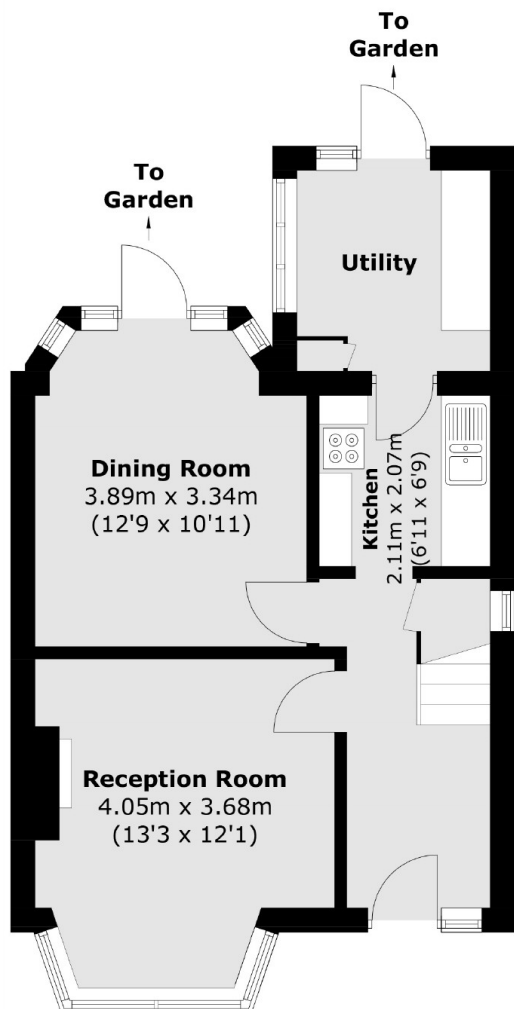
We are delighted to bring to the market this fantastic three bedroom end of terrace house presented in beautiful condition throughout. There are two well proportioned reception rooms on the ground floor, separate kitchen and rear extended utility room. Further benefits include off street parking and a fantastically large rear garden with side access. There is further scope to extend into the loft and rear (STPP)

Pears Road is a popular residential road situated close to Hounslow East Tube Station (Piccadilly line), Hounslow High Street and local parks. The property is also situated to nearby areas of Isleworth, Twickenham and St Margaret's.

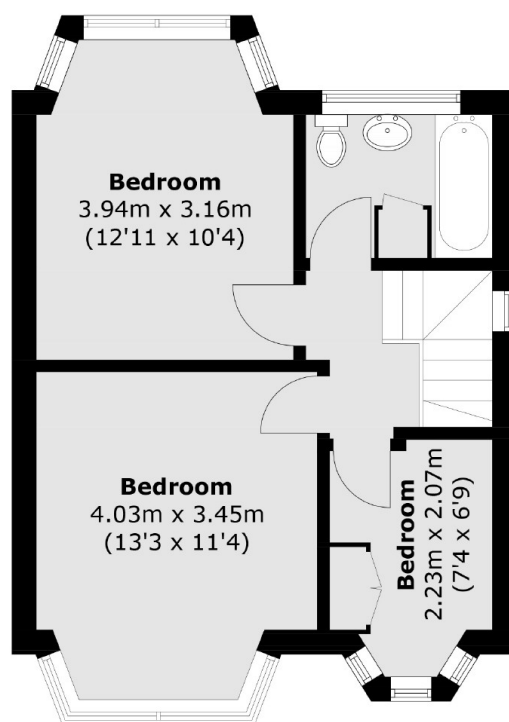
Features

- End-of-Terrace House
- Three Bedrooms
- Two Reception Rooms
- Driveway
- Exceptionally Large Garden
- Scope to Extend (STPP)

Pears Road, Hounslow, TW3



Ground Floor



First Floor

Total area (approx.): 86.4 sq. m (930.0 sq. ft)

Dexters

Isleworth
568 London Road
Isleworth
TW7 4EP
Sales
020 8560 1177

Energy Rating: D. We aim to make our particulars both accurate and reliable. However they are not guaranteed; nor do they form part of an offer or contract. If you require clarification on any points then please contact us, especially if you're traveling some distance to view. Please note that appliances and heating systems have not been tested and therefore no warranties can be given as to their good working order.

 **RICS** | Regulated
Estate Agent
and Letting Agent

[dexters.co.uk](https://www.dexters.co.uk)