



GREENHILL

58 New Park Road
Newgate Street, Hertford, SG13 8RF

Offers over £2,000,000



58 New Park Road, Newgate Street, Hertford, SG13 8RF

Set behind secure electric gates on one of Hertfordshire’s most desirable private roads and with views to the front and rear, this substantial five/six-bedroom detached residence spans almost 5,700 sq ft and offers exceptional family living with a focus on comfort, space, and sustainability. Featuring a stunning open-plan kitchen/dining room, three reception areas, four bathrooms, a cinema room, gym, and beautifully landscaped grounds backing onto open countryside, this eco-conscious home also includes solar panels, a large driveway, and a double garage — making it a perfect blend of luxury and practicality.

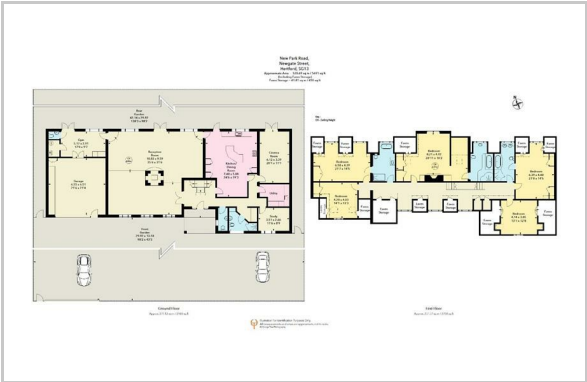


- Step Inside:
- Moving Upstairs:
- Step Outside:
- Location:

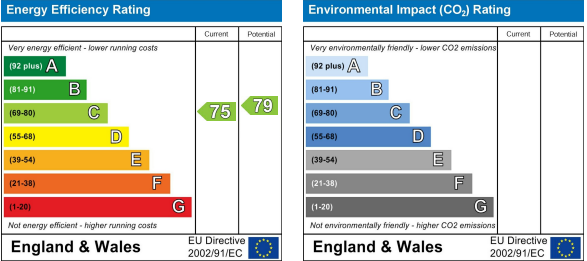
Area Map



Floor Plan



Energy Efficiency Graph



These particulars, whilst believed to be accurate are set out as a general outline only for guidance and do not constitute any part of an offer or contract. Intending purchasers should not rely on them as statements of representation of fact, but must satisfy themselves by inspection or otherwise as to their accuracy. No person in this firms employment has the authority to make or give any representation or warranty in respect of the property.