



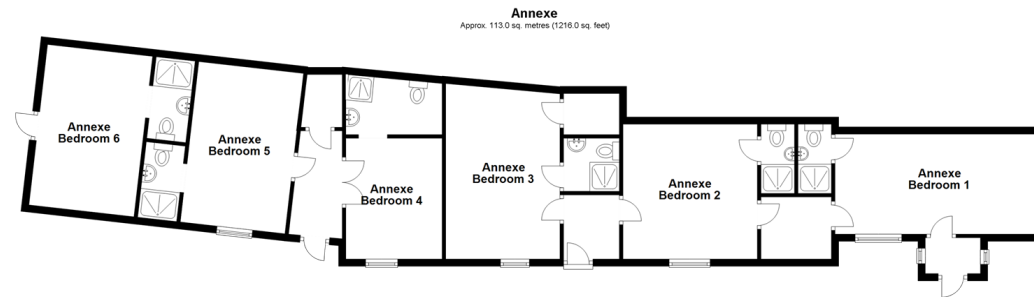
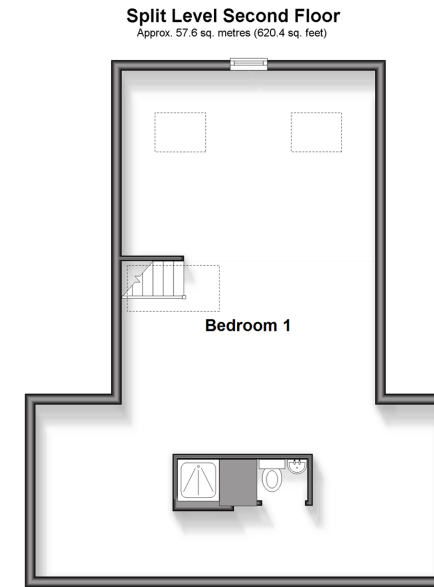
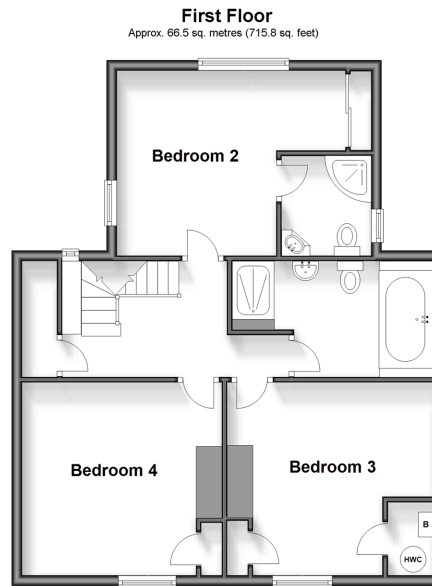
**Price**  
**£675,000**

**Freehold**

4x  3x  1x 

**Ongar Road, Abridge,  
Romford, Essex, RM4**

 **DOUGLAS  
ALLEN**  
Helping you move forwards



## Accommodation

### GROUND FLOOR

Entrance Hallway  
 Lounge: 13'0 x 11'8 (3.97m x 3.56m)  
 Kitchen/Breakfast Room: 19'7 x 12'10 (5.97m x 3.91m)  
 Utility Room: 15'9 x 5'6 (4.80m x 1.68m)  
 Family Area: 16'2 x 11'11 (4.93m x 3.63m)  
 Dining Area: 21'9 x 12'8 (6.63m x 3.86m)  
 Cloakroom

### FIRST FLOOR

Landing  
 Bedroom 2: 13'10 x 12'0 (4.22m x 3.66m)  
 En-Suite Shower Room  
 Bedroom 3: 13'3 x 11'0 (4.04m x 3.36m)  
 Bedroom 4: 12'9 x 12'3 (3.89m x 3.74m)  
 Bath/Shower Room

### SPLIT LEVEL SECOND FLOOR

Bedroom 1: 24'3 x 16'3 (7.40m x 4.96m)  
 En-Suite Shower Room

### ANNEXE

Annexe Bedroom 1  
 En-Suite Shower Room  
 Annexe Bedroom 2 : 12'3 x 12'0 (3.74m x 3.66m)  
 En-Suite Shower Room  
 Annexe Bedroom 3 : 12'3 x 12'0 (3.74m x 3.66m)  
 En-Suite Shower Room  
 Annexe Bedroom 4: 11'7 x 8'5 (3.53m x 2.57m)  
 En-Suite Shower Room  
 Annexe Bedroom 5 : 14'8 x 9'7 (4.47m x 2.92m)  
 En-Suite Shower Room  
 Annexe Bedroom 6 : 14'0 x 9'3 (4.27m x 2.82m)  
 En-Suite Shower Room

### OUTSIDE

Off Street Parking  
 Rear Garden  
 Workshop/Outbuilding



## Main features

- Outbuilding/workshop to the rear
- No onward chain
- Located in the beautiful Essex Village of Abridge with countryside all around
- Substantial plot with a large rear garden
- 6 bedroom annexe with en-suite shower rooms to all bedrooms



### Nearest Schools

Primary Schools: Lambourne Primary 0.6 miles, St John Fisher Catholic Primary 1.6 miles, Thomas Willingale School 1.7 miles

Secondary Schools: Debden Park High School 1.5 miles,



### Transport Information

Train Stations: Chingford 5.1 miles, Chadwell Heath 5.9 miles, Romford 6.0 miles

Underground Theydon Bois 1.5 miles, Debden 1.8 miles, Epping 2.8 miles



**Address** Skpton 9.9 miles, Pudding Mill Lane 10. miles,

Ongar Road, Abridge, Romford, Essex, RM4



### Directions

For directions to this property please contact us.



Call Chigwell Branch 020 8501 2131 ■ [douglasallen.co.uk](http://douglasallen.co.uk)



- A private rental licensing scheme applies to some properties in this area, please contact us before proceeding
- Appliances & services are untested, dimensions are approximate and floor plans are not to scale

■ Legal advice should be taken to verify fixtures/fittings, planning, alterations and/or lease details



53619168/20250915/SP/SP