

## Symphony Mews, W10

£3,250 Per calendar month

Three bedroom, two bathroom Mews house arranged over three floors. Finished to a very high standard with a fantastic open-plan kitchen living area, wood flooring and great storage throughout.

Symphony Mews is a short walk from Queens Park Station and Salusbury Road for multiple transport links, amenities, M&S Simply Food and the Sunday Farmers' Market.

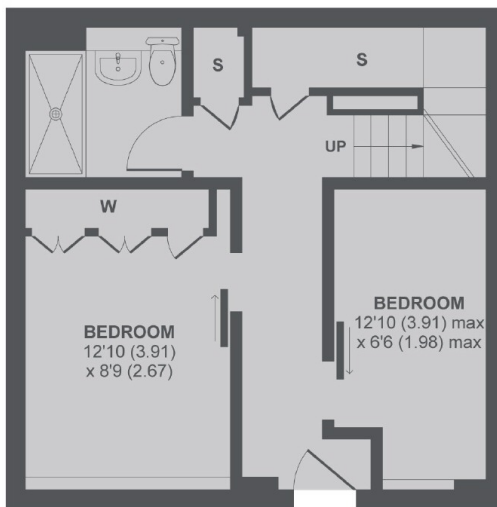
### Features

Mews House  
Three Bedroom  
Two Bathroom  
Wood Flooring  
Amazing Interiors  
Allocated Parking

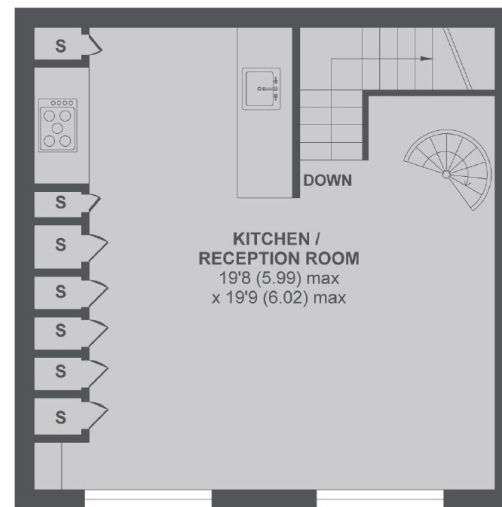
# Symphony Mews, London, W10



2nd Floor



Ground Floor



1st Floor

## Symphony Mews W10

MAIN HOUSE APPROX FLOOR AREA 955 SQ.FT 88.7 SQ.M (Excludes Void)

Copyright nichecom.co.uk 2018 REF : 259373