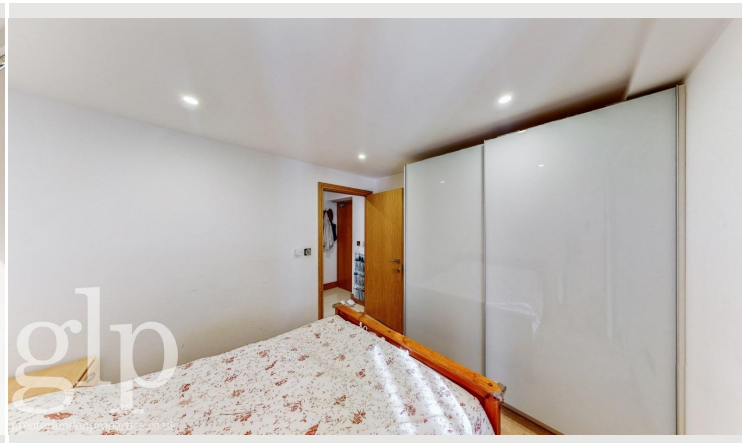


Churchway
Greater London

Offers in Excess of £420,000

Sales



Greater London Properties Presents...

- Cash Buyers Only
- First Floor Apartment With Lift Access
- Approximately 480 Sq Ft (44.6 Sq M) Of Internal Accommodation
- Two Bedrooms
- Bright Corner-aspect Position With Excellent Natural Light
- Kings Cross



VIEW ONLINE



CALL NOW 0207 113 1066

www.glp.co.uk

@greaterlondonproperties

[t](#) [f](#) [in](#) [@](#)

