



## Robsart Street, SW9

£350,000

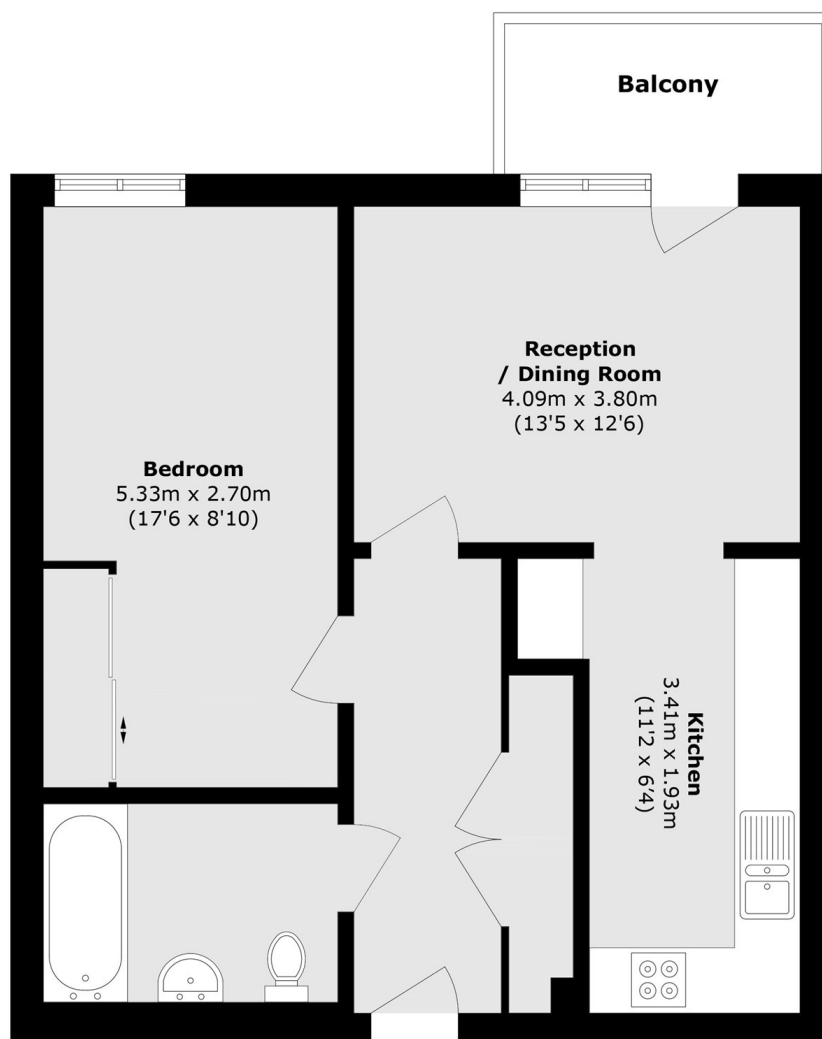
This beautifully maintained one-bedroom modern apartment offers a spacious separate kitchen, a generously sized double bedroom, and a bright living room that opens onto a private balcony. Large windows and the balcony access allow natural light to flood the apartment throughout the day.

Ideally positioned between Brixton and Stockwell, Robsart Street benefits from excellent transport links, including frequent bus services and easy access to both the Victoria and Northern Underground lines. The surrounding area offers a vibrant mix of local favourites, from independent cafés and popular restaurants to charming pubs and green open spaces, providing the perfect balance of city living and community atmosphere.

### Features

- One Double Bedroom
- Modern
- Secure Development
- Large Private Balcony
- Exceptional Links
- Excellent Condition

# Robsart Street, London, SW9



Total area (approx.): 51.3 sq. m (552.1 sq. ft)

Balcony area (approx.): 4.0 sq. m (43.0 sq. ft)