



Connells

Kit Hill Crescent
Plymouth



Property Description

This beautifully presented two double-bedroom home offers the perfect opportunity for first-time buyers or anyone seeking a comfortable and well-located property. The home enjoys far-reaching views towards the Tamar Bridge and beyond, creating a wonderful backdrop to everyday living.

Inside, the property features a spacious kitchen-diner, ideal for modern living and entertaining, alongside a separate, well-proportioned lounge offering a cosy retreat. Both bedrooms are generous doubles, providing excellent space and versatility.

To the rear, you'll find a large, enclosed garden, perfect for relaxing, gardening, or enjoying outdoor dining during the warmer months.

This is a fantastic opportunity to secure a lovely home with great space, stunning views, and superb potential.

Entrance Hall

Stairs rising to the first floor.

Lounge

15' 11" max x 12' 1" max (4.85m max x 3.68m max)

Double glazed bay window to the side elevation and an additional double glazed window to the front. Radiator.

Kitchen / Diner

13' 9" max x 11' 7" max (4.19m max x 3.53m max)

Open plan kitchen/diner. The kitchen comprises of a range of matching wall and base units with worktops above. Gas cooker point. Stainless steel sink and drainer with mixer tap. Space for under counter appliances including plumbing for a washing machine. Wall mounted boiler. Space for fridge/freezer. Access to understairs storage. Radiator. Double glazed window to the rear and a uPVC double glazed door.

Upstairs Landing

Double glazed window to the rear elevation. Radiator.

Bedroom 1

15' 11" max x 10' 4" max (4.85m max x 3.15m max)

Spacious bedroom with dual aspect double glazed windows to the front and rear elevations with radiators beneath.

Bedroom 2

10' 8" max x 9' 10" max (3.25m max x 3.00m max)

Double glazed window to the front elevation. Radiator. Storage cupboard.

Bathroom

Panel bath with shower above, low level w.c. and a pedestal sink. Obscured double glazed windows to the rear elevation.

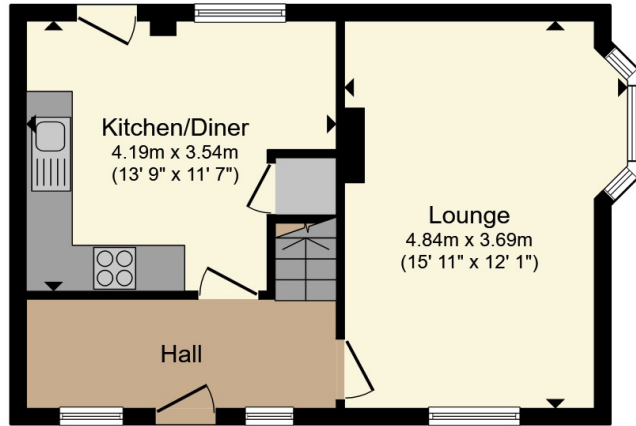
Outside

The property boasts a generous rear garden which is mainly laid to lawn.

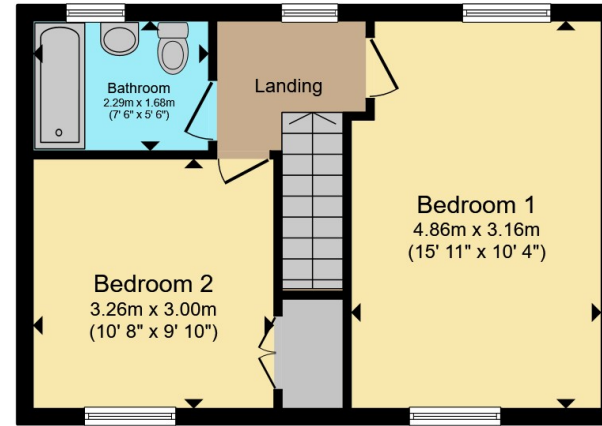








Ground Floor



First Floor

Total floor area 75.5 m² (813 sq.ft.) approx

This floor plan is for illustrative purposes only. It is not drawn to scale. Any measurements, floor areas (including any total floor area), openings and orientation are approximate. No details are guaranteed, they cannot be relied upon for any purpose and they do not form part of any agreement. No liability is taken for any error, omission or misstatement. A party must rely upon its own inspection(s). Powered by www.propertybox.io



To view this property please contact Connells on

T 01752 351616
E stbudeaux@connells.co.uk

15 Victoria Road St Budeaux
 PLYMOUTH PL5 1RW

EPC Rating: C Council Tax
 Band: A

Tenure: Freehold

view this property online connells.co.uk/Property/SBU109644



1. MONEY LAUNDERING REGULATIONS Intending purchasers will be asked to produce identification documentation at a later stage and we would ask for your co-operation in order that there will be no delay in agreeing the sale. 2. These particulars do not constitute part or all of an offer or contract. 3. The measurements indicated are supplied for guidance only and as such must be considered incorrect. Potential buyers are advised to recheck measurements before committing to any expense. 4. We have not tested any apparatus, equipment, fixtures, fittings or services and it is in the buyers interest to check the working condition of any appliances.

Connells Residential is registered in England and Wales under company number 1489613, Registered Office is Cumbria House, 16-20 Hockliffe Street, Leighton Buzzard, Bedfordshire, LU7 1GN. VAT Registration Number is 500 2481 05.

See all our properties at www.connells.co.uk | www.rightmove.co.uk | www.zoopla.co.uk

Property Ref: SBU109644 - 0002