



£1,550 pcm
Burrells Wharf Square, E14



1

Bedroom



1

Bathroom

211 Edgware Rd, London, NW9 6LP |
colindale@warrenbradleyestates.co.uk

020 8200 7007



£1,550 pcm
Burrells Wharf Square, E14



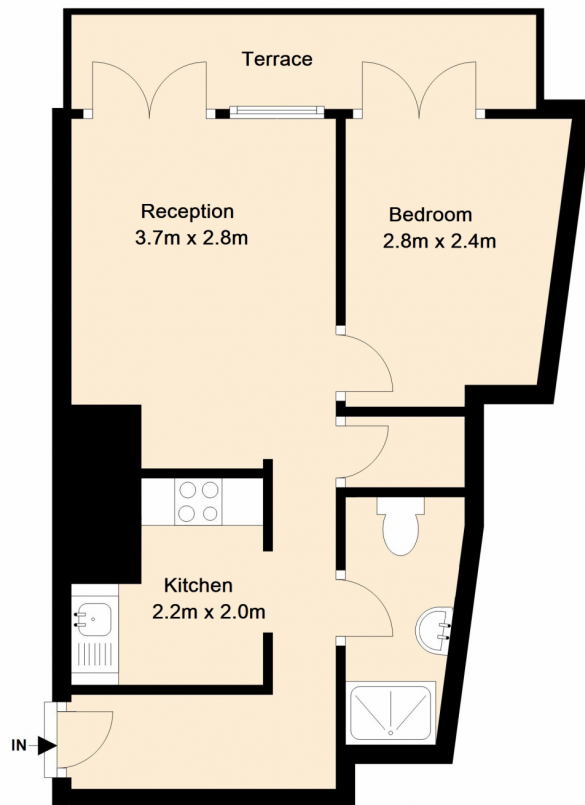
We are delighted to offer for rent this one bedroom ground floor apartment which is located in the Grade II listed Burrells Wharf development. The property boasts a bright lounge with separate kitchen, tiled shower room, double bedroom and wood flooring throughout. This property also has the added convenience of an allocated parking space.

Residents benefit from a 24 hour concierge service, gymnasium, sauna, jacuzzi and a swimming pool, as well as communal grounds which offer views of the London skyline. Located approximately 600m from Mudchute DLR station & within 100m of Mast House Terrace pier for Thames Clipper service for easy access to Canary Wharf, The O2 Centre & Central London.

Offered fully furnished the property is available 12th January 2026.



Plate House



Total Area: Approx 31.2 Sq. Metres (335.6 Sq Feet)

Score	Energy rating	Current	Potential
92+	A		
81-91	B		
69-80	C		78 C
55-68	D		
39-54	E	48 E	
21-38	F		
1-20	G		

