



PEAR
PROPERTIES



Columbia House, 4 Romany Road
Worthing

Offers Over £150,000



Columbia House, Worthing

Modern one bedroom apartment with open plan kitchen and living area, integrated appliances, stylish bathroom, allocated parking.

Council Tax band: A

Tenure: Leasehold

EPC Energy Efficiency Rating: C

EPC Environmental Impact Rating: C

- One Bedroom Apartment
- One Allocated Parking Space
- Open Plan Kitchen / Living Room
- Kitchen With Integrated Appliances
- Modern Fitted Bathroom
- Close To Local Amenities
- Please Take A Look At Our Virtual Tour & Walk Through Video



Bathroom

5' 8" x 6' 4" (1.73m x 1.94m)

Modern partially tiled bathroom comprising bath with over bath shower, WC and hand wash basin

Bedroom

7' 8" x 13' 9" (2.34m x 4.19m)

Bright double bedroom with built in storage cupboard.

Open Plan Kitchen / Living Room

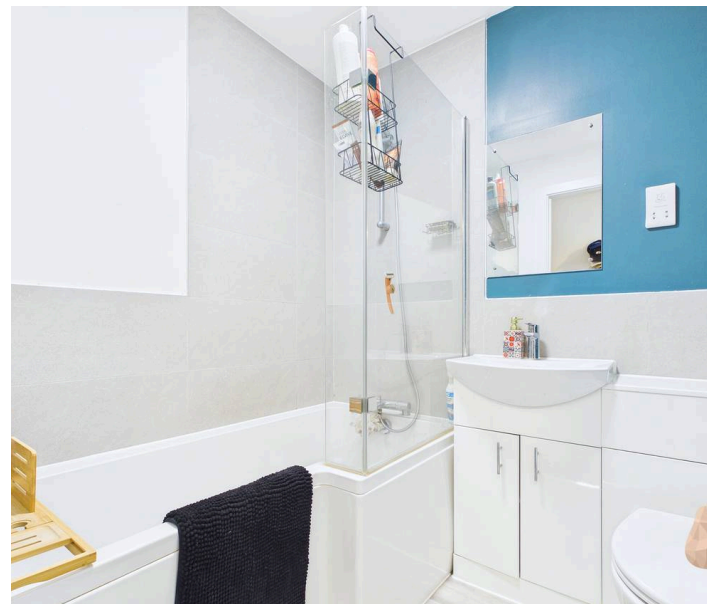
14' 8" x 11' 10" (4.48m x 3.60m)

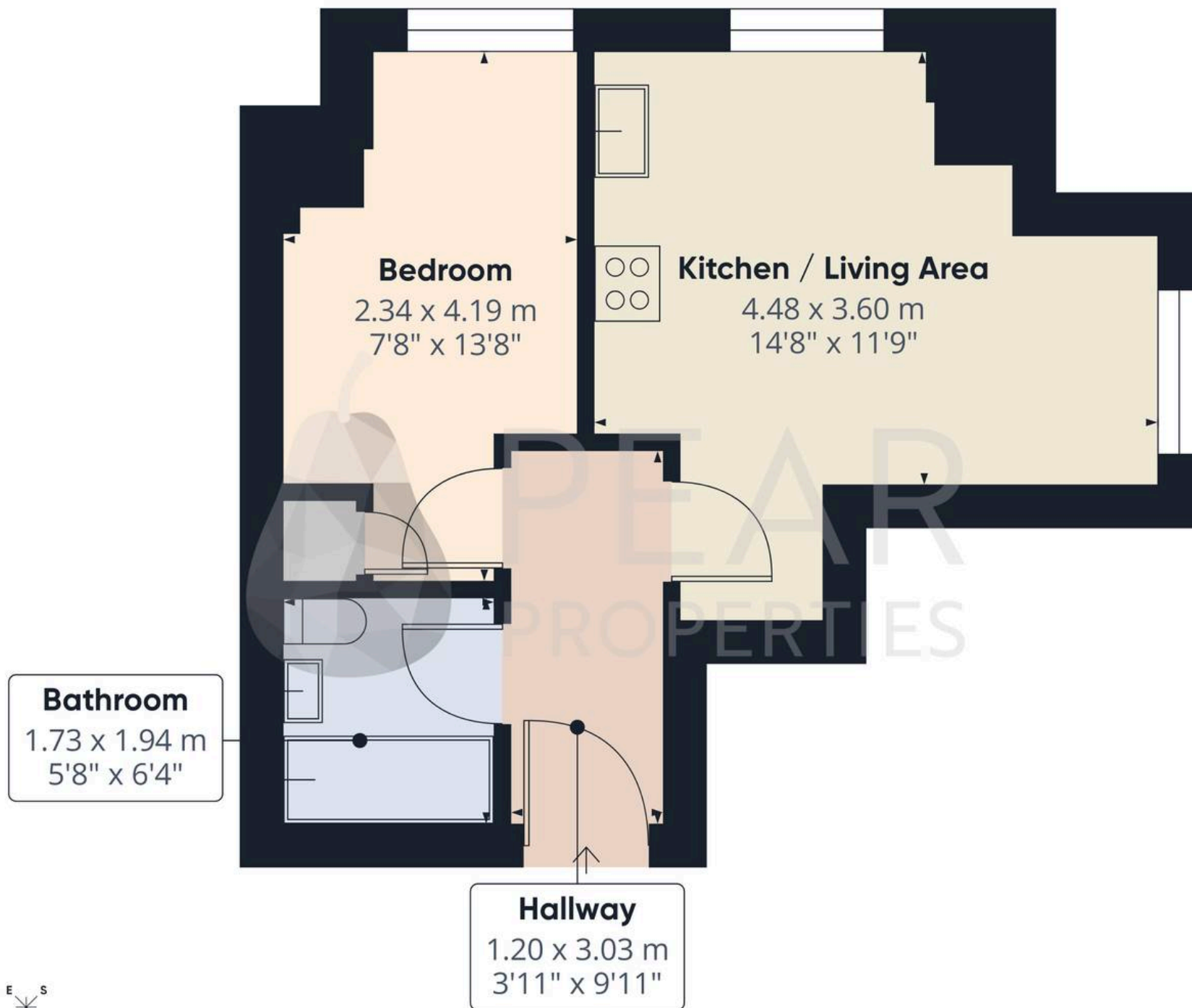
Dual aspect open plan kitchen/ living room comprising a good range of modern units and drawers with integrated appliances.

Allocated parking

1 Parking Space

One allocated parking space





Approximate total area⁽¹⁾

30 m²

323 ft²

(1) Excluding balconies and terraces

Calculations reference the RICS IPMS 3C standard. Measurements are approximate and not to scale. This floor plan is intended for illustration only.

GIRAFFE360





Pear Properties

20 Crabtree Lane, Lancing - BN15 9QP

01903 947337 · hello@pearproperties.uk · pearproperties.uk