

first for homes

first for property in life - [firstforhomes.co.uk](https://www.firstforhomes.co.uk)

Contact Allan England's Team

01592 752 944



Auchmuty Drive, Glenrothes
Offers over £99,995

Auchmuty Drive, Glenrothes

Beautifully Presented 2 Bedroom Terraced Villa With South Facing Rear Garden, Situated In The Desirable Area Of Auchmuty, Glenrothes! Located In Close Proximity To Local Amenities & Auchmuty High School!

Allan England's Award Wining team at First For Homes are proud to welcome to the market this beautifully presented 2 Bedroom Terraced family villa, situated in the central location of Auchmuty, Glenrothes! This fantastic property offers spacious living accommodation, the ground floor comprises: entrance hallway, bright lounge/diner with feature fireplace and space for dining table and chairs, a well-appointed kitchen with ample space for all appliances. The upper level comprises of 2 generous bedrooms, both with triple built in wardrobes and a modern family shower room. Externally the property offers an easily maintained South facing rear garden with spacious outbuilding and large patio area and garden to the front. Ample street parking available. Within walking distance to town centre, bus station, high school and local amenities. Early viewing is highly recommended! Don't miss out!

Home Report Value - £105,000

EPC Rating - D

Council Tax Band - B

Call First For Homes - First For Trust... First For Service... First For Aftercare!

Glenrothes is regarded as one of the most successful Towns in Scotland with a wealth of local amenities including Kingdom Shopping Centre as well as sport and leisure at Michael Woods and a multi-screen cinema. Glenrothes boasts its very own 18-hole Golf course and both Primary and Secondary schooling are available. For the commuter the A92 allows swift access to Edinburgh and there are railway stations at both Thornton and Markinch.





SITUATION – Glenrothes

ENTRANCE HALLWAY

OPEN PLAN LOUNGE/DINER

20'6" x 11'1" (approx) (6.25m x 3.40m (approx))

KITCHEN

10'11" x 8'11" (approx) (3.33m x 2.74m (approx))

STAIRS TO UPPER LEVEL

BEDROOM 1

14'1" x 10'4" (approx) (4.30m x 3.15m (approx))

BEDROOM 2

10'6" x 9'10" (approx) (3.22m x 3.00m (approx))

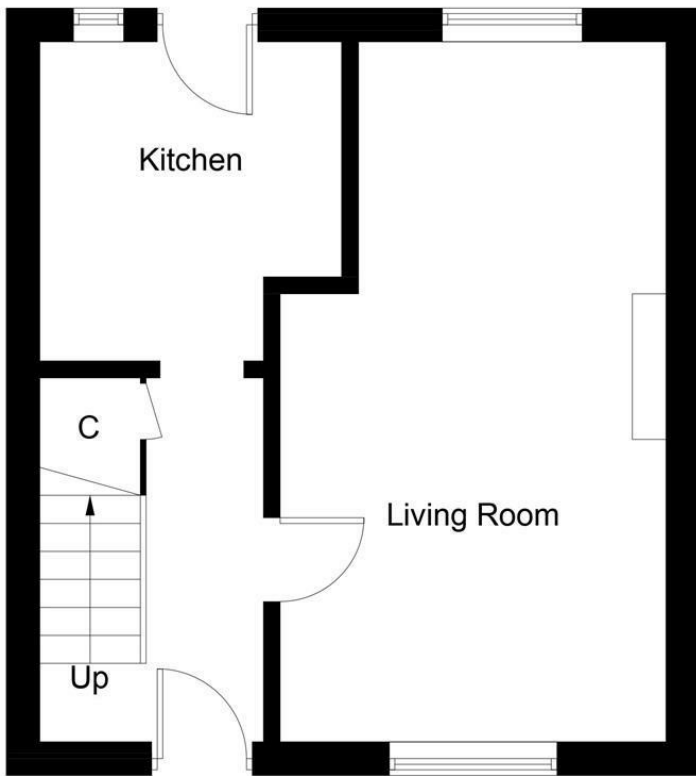
SHOWER ROOM

6'4" x 5'8" (approx) (1.94m x 1.75m (approx))

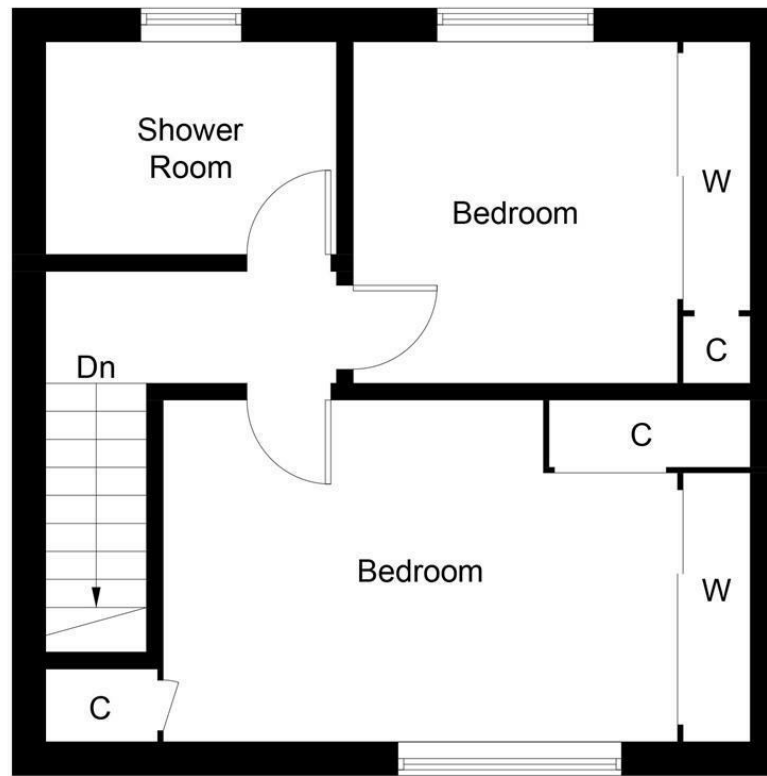
FRONT & REAR GARDENS

STREET PARKING

INFORMATION



Ground Floor



First Floor

Illustration for identification purposes only, measurements are approximate, not to scale. Fourlabs.co © (ID1307647)

Information

These particulars are prepared on the basis of information provided by our clients. We have not tested the electrical system or any electrical appliances, nor where applicable, any central heating system. All sizes are recorded by electronic tape measurement to give an indicative, approximate size only. Prospective purchasers should make their own enquiries – no warranty is given or implied. This schedule is not intended to, and does not form any contract.

FREE Valuation

Selling Your Home?

Choose first for homes - a highly experienced estate agency team you can trust to sell your home at the highest possible price. Offering fantastic savings on selling fees, with no compromise on service, free professional photography highlighting your home in its best light, first for homes will be your first choice. Contact us today to arrange your appointment.



first for trust



first for service



first for aftercare

first for homes
first for property in life - firstforhomes.co.uk

Contact Allan England's Team
01592 752 944

32 North Street, Glenrothes, Fife KY7 5NA
Fax: 01592 807947
sales@firstforhomes.co.uk
www.firstforhomes.co.uk