



Carmine Wharf

30 Copenhagen Place, E14

Guide Price £215,000

A spacious one bedroom apartment, situated on the lower ground floor of Carmine Wharf, with a private patio and generous open-plan living.

CHESTERTONS



Carmine Wharf

30 Copenhagen Place, E14

- 603sq ft 1 bedroom apartment with private balcony
- Exceptional views of Canary Wharf
- Secure/gated modern residential development.
- Located within 750m of Westferry DLR station.
- Close to local amenities & shops (Lidl & Tesco Local).



This stylish one bedroom apartment boasts a spacious, open-plan living area with large floor-to-ceiling windows that flood the space with natural light. The property includes a generous double bedroom, a contemporary bathroom, and a fully equipped kitchen. Located within the secure, gated Carmine Wharf development in the desirable Limehouse/Westferry area (E14), the apartment offers both comfort and convenience.

Carmine Wharf is ideally positioned near a range of local shops and amenities, including a Lidl and Tesco Local just 250m away. Plus, Westferry DLR station is just a short 750m walk, offering quick and easy connections to Canary Wharf and the City.

This property is for sale by the Modern Method of Auction, meaning the buyer and seller are to Complete within 56 days (the "Reservation Period"). Interested parties personal data will be shared with the Auctioneer (iamsold).

If considering buying with a mortgage, inspect and consider the property carefully with your lender before bidding.

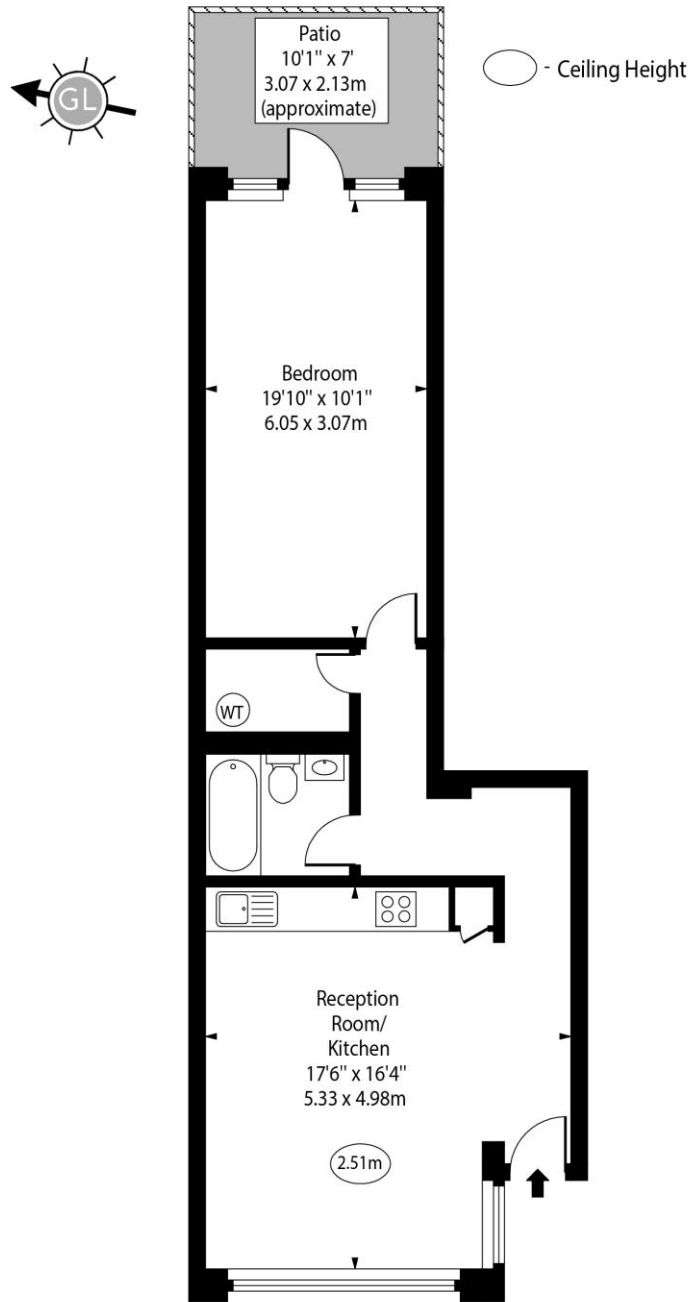
Tenure: Leasehold – 107 years approx.
Service Charge: £2465pa approx.
Ground Rent: £300pa
Local Authority: Tower Hamlets
Council Tax Band: D

Score	Energy rating	Current	Potential
92+	A		
81-91	B		
69-80	C	69 C	81 B
55-68	D		
39-54	E		
21-38	F		
1-20	G		

Chestertons Canary Wharf & Greenwich Sales

Harbour Island
 28 Harbour Exchange Square
 London
 E14 9GE
 canarywharf@chestertons.co.uk
 020 7510 8300
 chestertons.co.uk

Carmine Wharf,
Copenhagen Place, E14



Lower Ground Floor

Approx Gross Internal Area 606 Sq Ft - 56.30 Sq M

Every attempt has been made to ensure the accuracy of the floor plan shown. However, all measurements, fixtures, fittings, and data shown are approximate interpretations and for illustrative purposes only. Measured according to the RICS. Not To Scale.

www.goldlens.co.uk

Ref. No. 030646K

