



3 Bailie Close, Abingdon OX14 5RF



## 3 Bailie Close

---

Impressive and very spacious four-bedroom, three storey townhouse, offering highly flexible family accommodation within this very popular cul-de-sac position, offering easy pedestrian access to well regarded schools and the thriving town centre's many amenities, sold with no ongoing chain.

Abingdon-on-Thames is one of England's oldest market towns, renowned for its attractive period architecture, rich history and picturesque riverside setting along the River Thames.

Bedrooms: 4

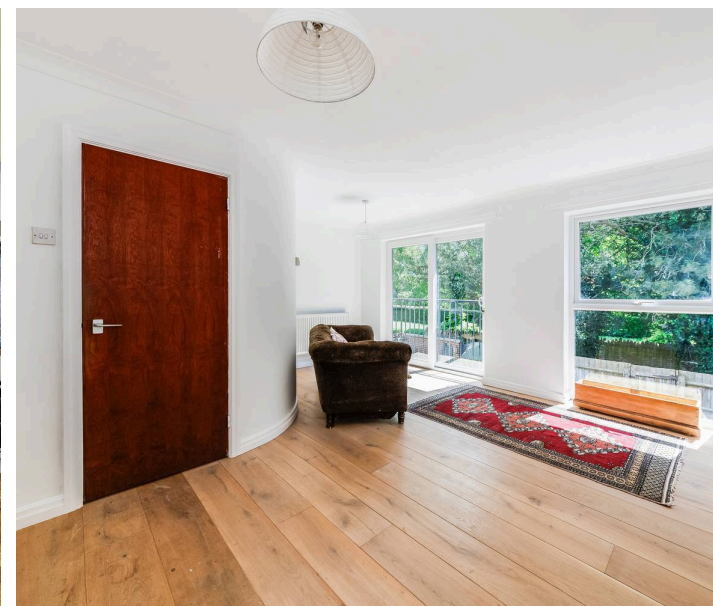
Bathrooms: 1

Reception Rooms: 2

Council Tax band: D

Tenure: Freehold

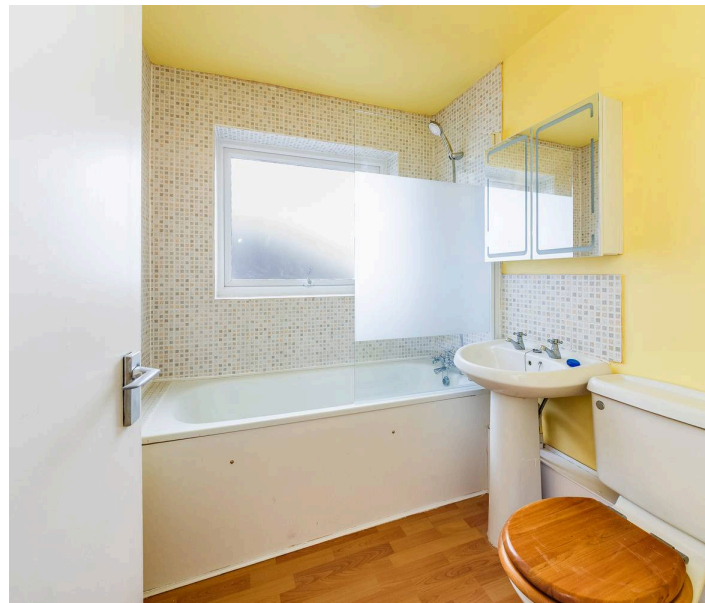
EPC Energy Efficiency Rating: C





## Key Features

- Enclosed entrance porch leading to a welcoming entrance hall with a cloakroom off and internal access to the integral garage
- Impressive and exceptionally spacious open plan kitchen/dining room stylishly refitted with an excellent selection of floor and wall units, complemented by several integrated appliances
- Bright and airy dining area, enhanced by double doors opening onto the south facing rear garden
- Delightful L-shaped living room, flooded with natural light from a large double glazed window and double doors leading to a Juliet balcony offering attractive views
- Versatile first floor double bedroom – ideal as a guest room or home office – alongside a modern family bathroom fitted with a white suite
- Generous top floor principal double bedroom offering elevated views and extensive wall to wall fitted wardrobe cupboards
- Two further top floor bedrooms providing ample accommodation for family living
- Features include PVCu double glazing, gas fire central heating (via an efficient replacement condensing gas boiler), recently replastered ceilings throughout and is sold with no ongoing chain
- Front gardens providing off road parking facilities leading to the integral garage
- To the rear the garden is predominantly paved for low maintenance and enjoys a sunny southerly aspect and backs on to attractive mature trees





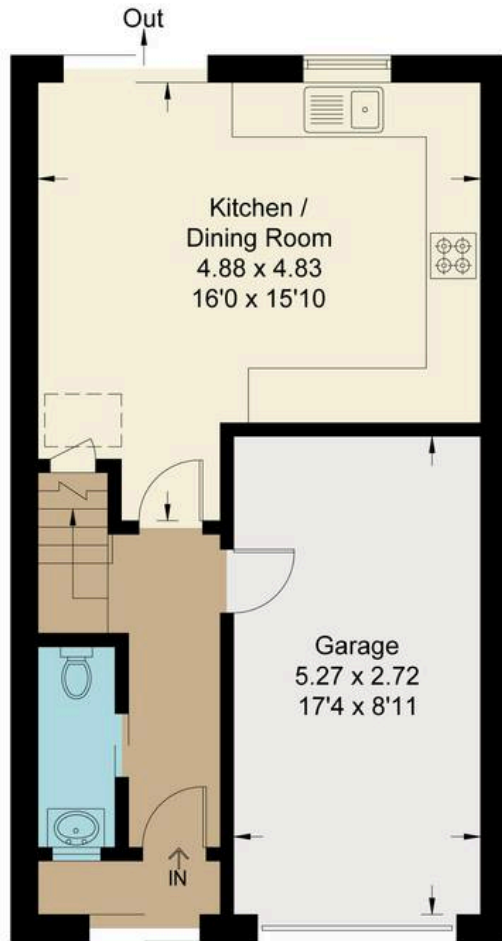
# Bailie Close, OX14

Approximate Gross Internal Area = 111.50 sq m / 1200 sq ft

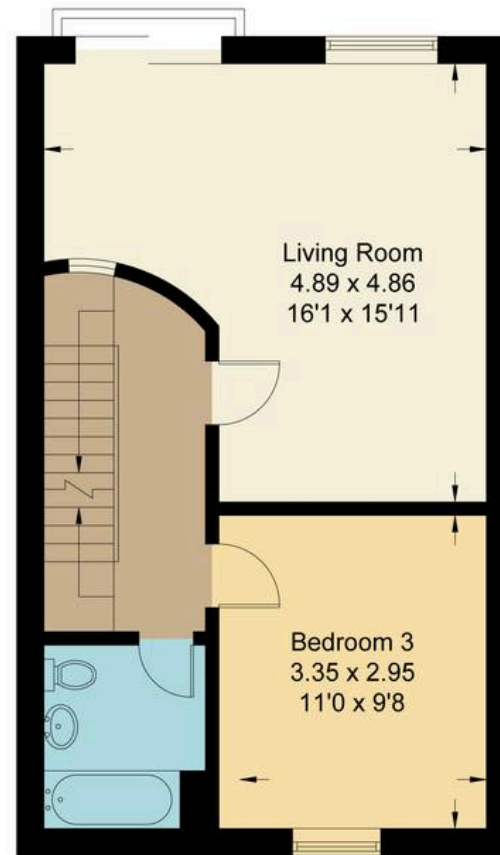
Garage = 14.30 sq m / 154 sq ft

Total = 125.80 sq m / 1354 sq ft

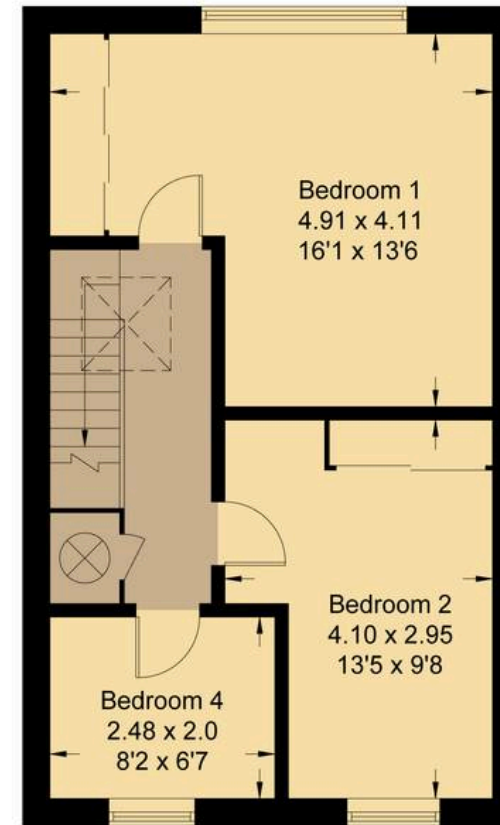
For identification only - Not to scale



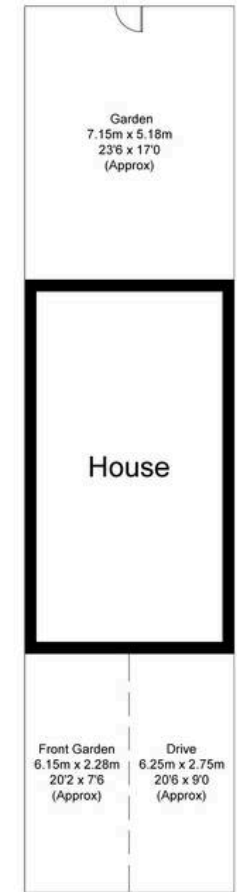
Ground Floor



First Floor



Second Floor



Not to scale, for illustration and layout purposes only.  
© Mortimer Photography. Produced for Hodsons.  
Unauthorised reproduction prohibited



**Hodsons**  
your move, our passion  
Sales | Lettings

5 Ock Street, Abingdon,  
Oxfordshire, OX14 5AL

T: 01235 553686

E: abingdon@hodsons.co.uk

[www.hodsons.co.uk](http://www.hodsons.co.uk)