



Pebble Court Pebble Lane, Aylesbury HP20 2JH



welcome to

Pebble Court Pebble Lane, Aylesbury

Nestled within the heart of the historic conservation area, this stunning two-bedroom apartment in the renowned Pebble Court presents a rare opportunity to secure a residence on one of the town's prettiest cobbled streets. Perfectly positioned just 0.3 miles from the mainline rail station (Aylesbury to Marylebone in under an hour), this exceptional apartment offers both convenience and character in equal measure.



Accommodation Comprises

Entrance Hall

Kitchen/ Diner/ Lounge

21' 2" x 12' 7" (6.45m x 3.84m)

Bedroom One

11' 8" x 8' 6" (3.56m x 2.59m)

En-Suite

Bedroom Two

11' x 8' 6" (3.35m x 2.59m)

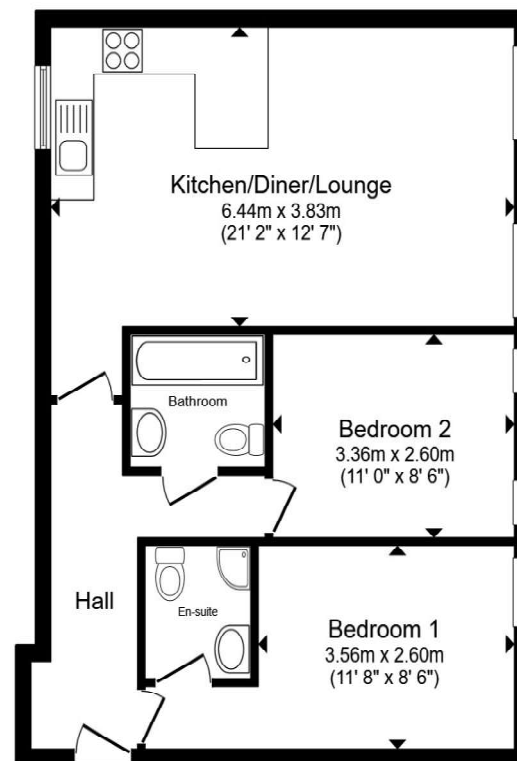
Bathroom

Outside

Allocated Parking

Step outside and discover the lively mix of shops, inviting cafés, and the celebrated Theatre, Cinema, and Restaurant Quarter—quite literally on your doorstep. The location is ideal for professionals, with easy walkability to all amenities, excellent transport connections for commuting, and an allocated parking space ensuring ultimate convenience.

With all the advantages of a central setting coupled with the tranquillity of a conservation area, this apartment is equally suited as a fabulous home or an attractive company let.



Second Floor

Total floor area 59.7 m² (643 sq.ft.) approx

This floor plan is for illustrative purposes only. It is not drawn to scale. Any measurements, floor areas (including any total floor area), openings and orientation are approximate. No details are guaranteed, they cannot be relied upon for any purpose and they do not form part of any agreement. No liability is taken for any error, omission or misstatement. A party must rely upon its own inspection(s). Powered by www.propertybox.io



view this property online brownandmerry.co.uk/Property/AYL116523



welcome to

Pebble Court Pebble Lane, Aylesbury

- TWO BEDROOM APARTMENT
- CONVERTED SCHOOL HOUSE
- CONSERVATION AREA
- ALLOCATED PARKING
- NO UPPER CHAIN

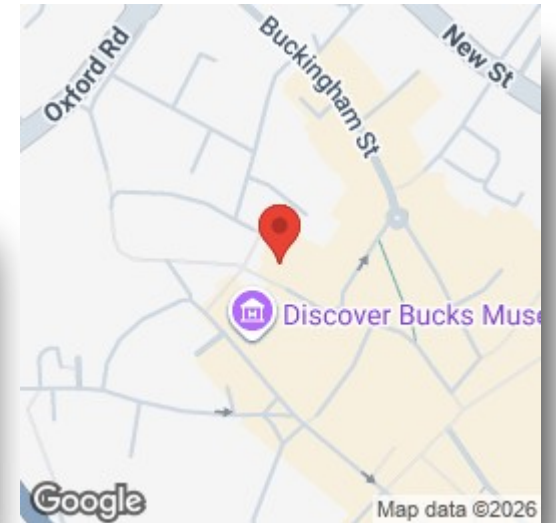
Tenure: Leasehold EPC Rating: Awaiting

Council Tax Band: C Service Charge: 1643.33

Ground Rent: 295.00

This is a Leasehold property with details as follows; Term of Lease 125 years from 01 Dec 2016. Should you require further information please contact the branch. Please Note additional fees could be incurred for items such as Leasehold packs.

£230,000



Please note the marker reflects the postcode not the actual property

view this property online [brownandmerry.co.uk/Property/AYL116523](https://www.brownandmerry.co.uk/Property/AYL116523)



Property Ref:
AYL116523 - 0002

1. MONEY LAUNDERING REGULATIONS Intending purchasers will be asked to produce identification documentation at a later stage and we would ask for your co-operation in order that there is no delay in agreeing the sale. 2. These particulars do not constitute part or all of an offer or contract. 3. The measurements indicated are supplied for guidance only and as such must be considered incorrect. Potential buyers are advised to recheck measurements before committing to any expense. 4. We have not tested any apparatus, equipment, fixtures or services and it is in the buyers interest to check the working condition of any appliances. 5. Where an EPC, or a Home Report (Scotland only) is held for this property, it is available for inspection at the branch by appointment. If you require a printed version of a Home Report, you will need to pay a reasonable production charge reflecting printing and other costs. 6. We are not able to offer an opinion either written or verbal on the content of these reports and this must be obtained from your legal representative. 7. Whilst we take care in preparing these reports, a buyer should ensure that his/her legal representative confirms as soon as possible all matters relating to title including the extent and boundaries of the property and other important matters before exchange of contracts.

Brown & Merry is a trading name of Sequence (UK) Limited which is registered in England and Wales under company number 4268443, Registered Office is Cumbria House, 16-20 Hockliffe Street, Leighton Buzzard, Bedfordshire, LU7 1GN. VAT Registration Number is 500 2481 05.


brown & merry



01296 488111



Aylesbury@brownandmerry.co.uk



5-7 Market Street, AYLESBURY,
Buckinghamshire, HP20 2PN



[brownandmerry.co.uk](https://www.brownandmerry.co.uk)