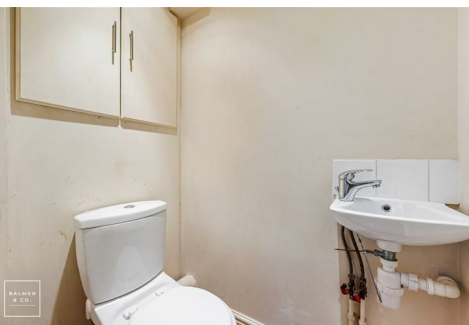


Chester Street, Leigh, WN7 1LS
£750 PCM

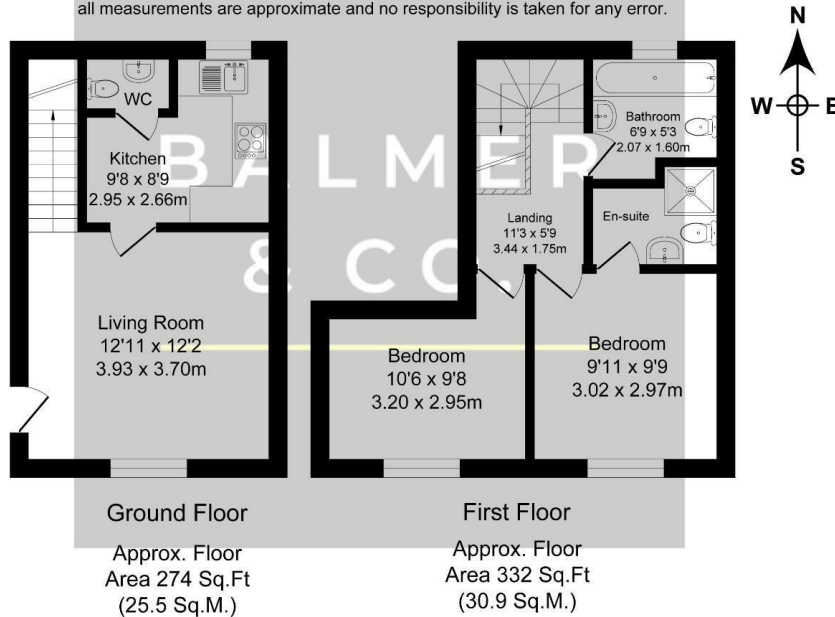


BALMER & CO are delighted to offer TO RENT this two bedroom ground floor duplex apartment. Ground floor accommodation comprises in brief, communal entrance with front door leading to living room, separate fitted kitchen, and downstairs W.C. To the first floor are two bedrooms, master with en-suite shower room, and further bathroom.

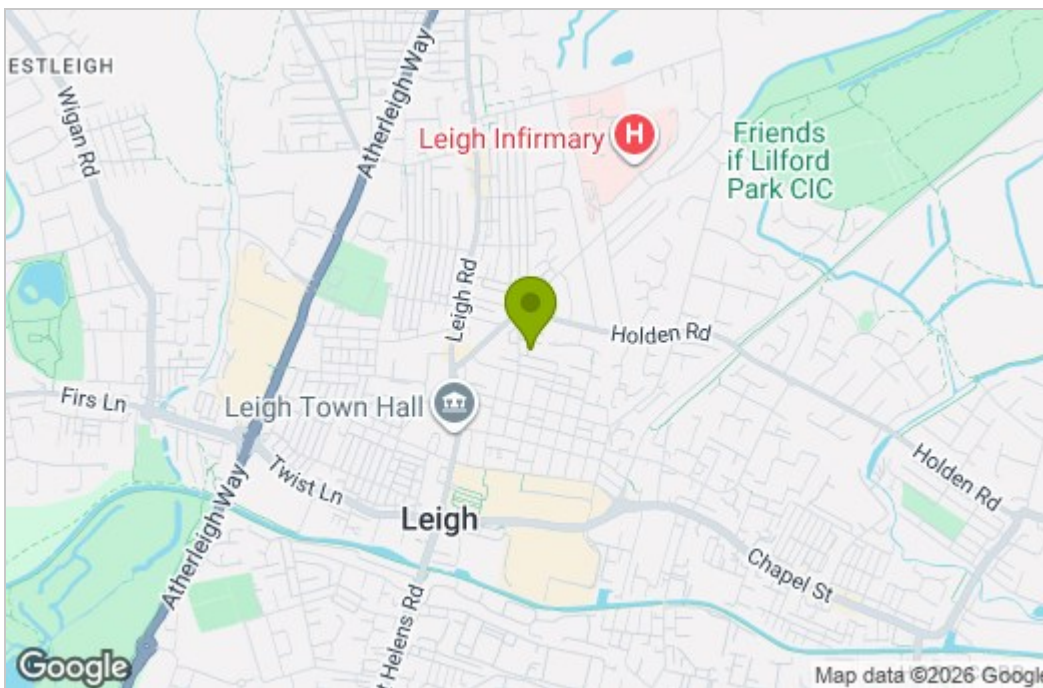
Floor Plan

Chester Street, Leigh Total Approx. Floor Area 606 Sq. ft. (56.4 Sq.M.)

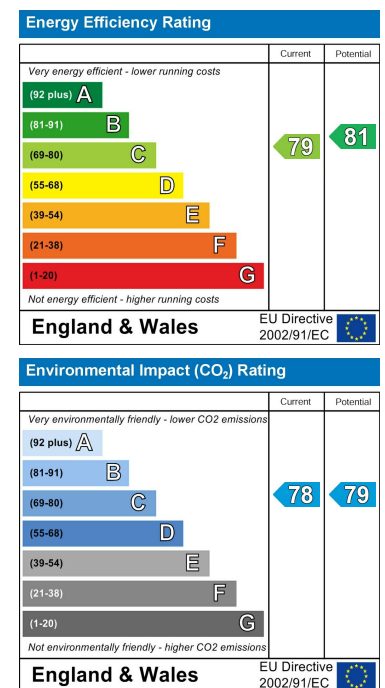
Surveyed and drawn by Lens Media for illustrative purposes only. Not to scale. Whilst every attempt was made to ensure the accuracy of the floor plan, all measurements are approximate and no responsibility is taken for any error.



Area Map



Energy Efficiency Graph



These particulars, whilst believed to be accurate are set out as a general outline only for guidance and do not constitute any part of an offer or contract. Intending purchasers should not rely on them as statements of representation of fact, but must satisfy themselves by inspection or otherwise as to their accuracy. No person in this firm's employment has the authority to make or give any representation or warranty in respect of the property.