



CLIVEPEARCE
Now you're moving

2 Bedrooms

Cottage - Terraced

Asking Price

£320,000

Located in

Truro



www.clivepearceproperty.com



Bissoe Road

Truro | | TR3 6JA



A beautifully presented village cottage in Carnon Downs with large gardens, detached workshop and private parking. NO CHAIN.

Bissoe Road

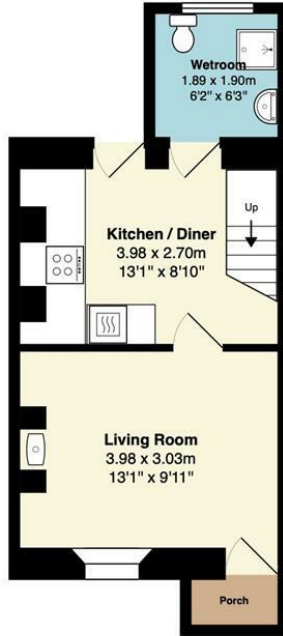
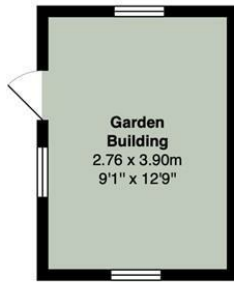
£320,000 Freehold



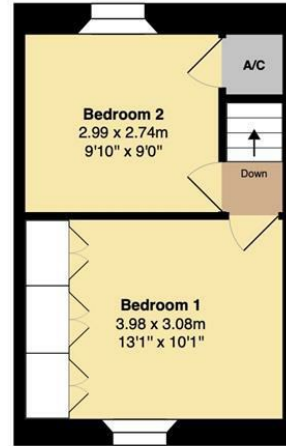
- Delightful two bedroom village cottage
- Living room with wood burner in an attractive stone fireplace
- Wet room shower
- Electric heating and double glazing in main house
- Large detached workshop and driveway parking
- Beautifully presented and offering a cozy feel
- Kitchen with integrated appliances
- Surprisingly spacious bedrooms
- Stunning long and level gardens
- NO CHAIN

Ground Floor
Area (approx): 29.7 m² ... 319 ft²

Outbuilding
Area (approx): 10.8 m² ... 116 ft²



1st Floor
Area (approx): 23.6 m² ... 254 ft²



Total Area: 64.1 m² ... 689 ft²



Whilst every attempt has been made to ensure the accuracy of the floorplan contained here, measurements of doors, windows, rooms and any other items are approximate and no responsibility is taken for any error, omission or mis-statement. This plan is for illustrative purposes only and should be used as such by any prospective purchaser. The services, systems and appliances shown have not been tested and no guarantee as to their operability or efficiency can be given.

Council Tax Band B

Local Authority

Agents Note: Whilst every care has been taken to prepare these particulars, they are for guidance purposes only. All measurements are approximate and are for general guidance purposes only and whilst every care has been taken to ensure their accuracy, they should not be relied upon and potential buyers/tenants are advised to recheck the measurements.

Energy Efficiency Rating		
	Current	Potential
Very energy efficient - lower running costs		
(92 plus) A		92
(81-91) B		
(69-80) C		
(55-68) D	61	
(39-54) E		
(21-38) F		
(1-20) G		
Not energy efficient - higher running costs		
England & Wales	EU Directive 2002/91/EC	

31 Lemon Street
Truro
Cornwall
TR1 2LS



CLIVEPEARCE
Now you're moving

hello@clivepearceproperty.com

01872 272622

www.clivepearceproperty.com