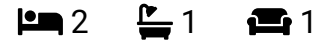




## Colson Way, Streatham, SW16

Guide Price £325,000 - £365,000



PLEASE SELECT 2 FOR MATT ON CALLING - GUIDE PRICE £325K - £365K – Beautiful two bedroom fifth floor apartment (710 Sq.Ft) with private balcony and residents parking, ideally situated on the borders of Streatham and Tooting, within easy reach of transport links and amenities. The property offers bright and spacious accommodation with modern interiors and high quality finish throughout – the perfect blend of comfort and convenience for a modern lifestyle. Features include a wonderful 22'9 open plan reception/kitchen, modern bathroom, inbuilt storage, gas central heating, double glazing, neutral décor and secure entry.

**Jonathan Woods**  
jonathanwoods.exp.uk.com  
jw@jonathanwoodsrealestate.com  
07498 214 463



## Key Features

- PLEASE SELECT 2 FOR MATT ON CALLING
- CONVENIENT STREATHAM/TOOTING LOCATION
- DUAL ASPECT OPEN PLAN RECEPTION/ KITCHEN
- MODERN BATHROOM
- MOMENTS FROM VIBRANT SHOPS, BARS AND CLOSE TO EXCELLENT TRANSPORT LINKS RESTAURANTS
- BEAUTIFUL 2 BED FIFTH FLOOR APARTMENT (710 SQ.FT),
- MODERN INTERIORS AND HIGH QUALITY FINISH
- PRIVATE BALCONY WITH FAR-REACHING VIEWS
- RESIDENTS PARKING

### Fordyce House

Approximate Gross Internal Area = 66.0 sq m / 710 sq ft  
Including Limited Use Area (1.3 sq m / 14 sq ft)

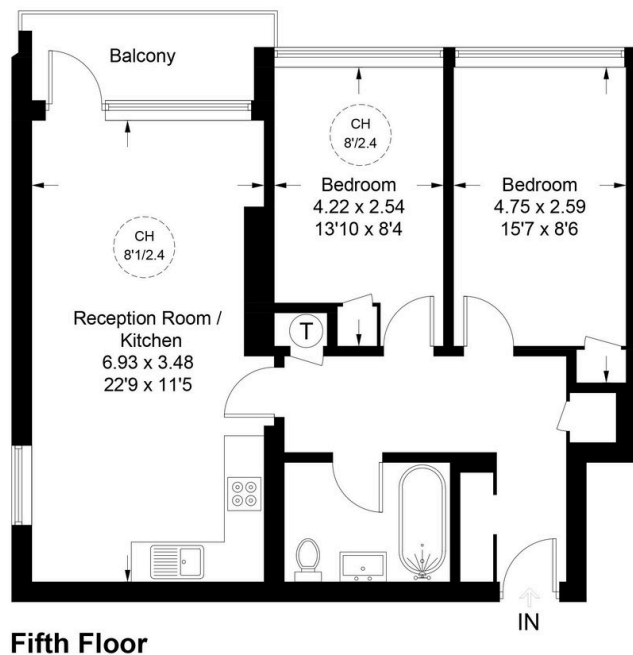


Illustration for identification purposes only, not for valuation purposes, measurements are approximate, not to scale. IPMS2