



42 Outfield Close

Great Oakley, Northamptonshire NN18 8FX



**Simpson West**

Tucked away in this highly desirable cul de sac, this spacious four bedroom semi-detached family home is arranged over three floors and located in the sought after area of Great Oakley.

Ideally positioned within walking distance of local amenities and transport links, the property offers both convenience and comfort. The ground floor features an inviting entrance hall, a cloakroom WC, a separate dining room or study, and a generous kitchen dining area with patio doors opening onto the rear garden.

On the first floor, you will find a bright and airy lounge, along with a double bedroom benefiting from its own en-suite shower room. The second floor comprises three additional bedrooms, including a well proportioned principal bedroom with en-suite, as well as a modern family bathroom.

Outside, the rear garden is fully enclosed, providing a good level of privacy, ideal for relaxing or entertaining. To the front, a landscaped frontage leads to a driveway and a single garage situated to the side of the property.

Early viewing is highly recommended to fully appreciate this beautifully presented home.

Energy Rating: C

Council Tax Band: D

£280,000



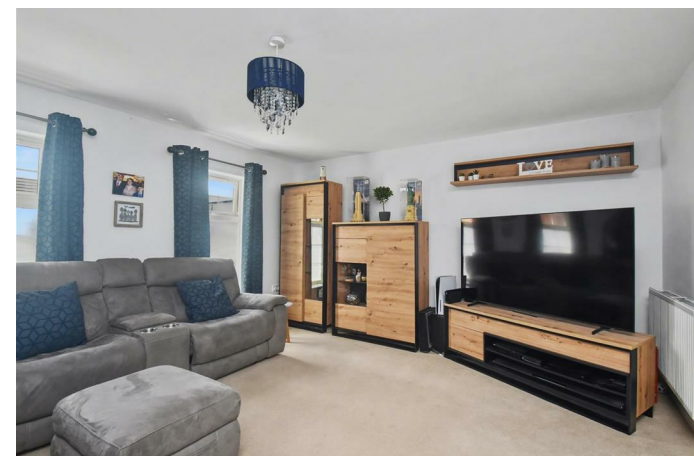
4

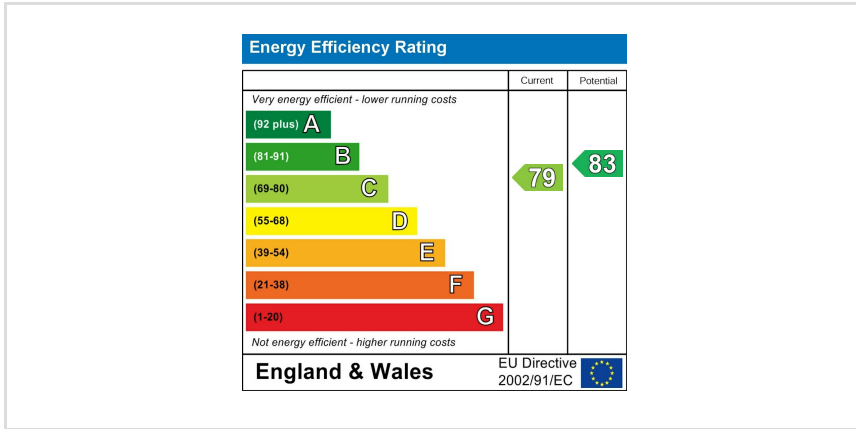
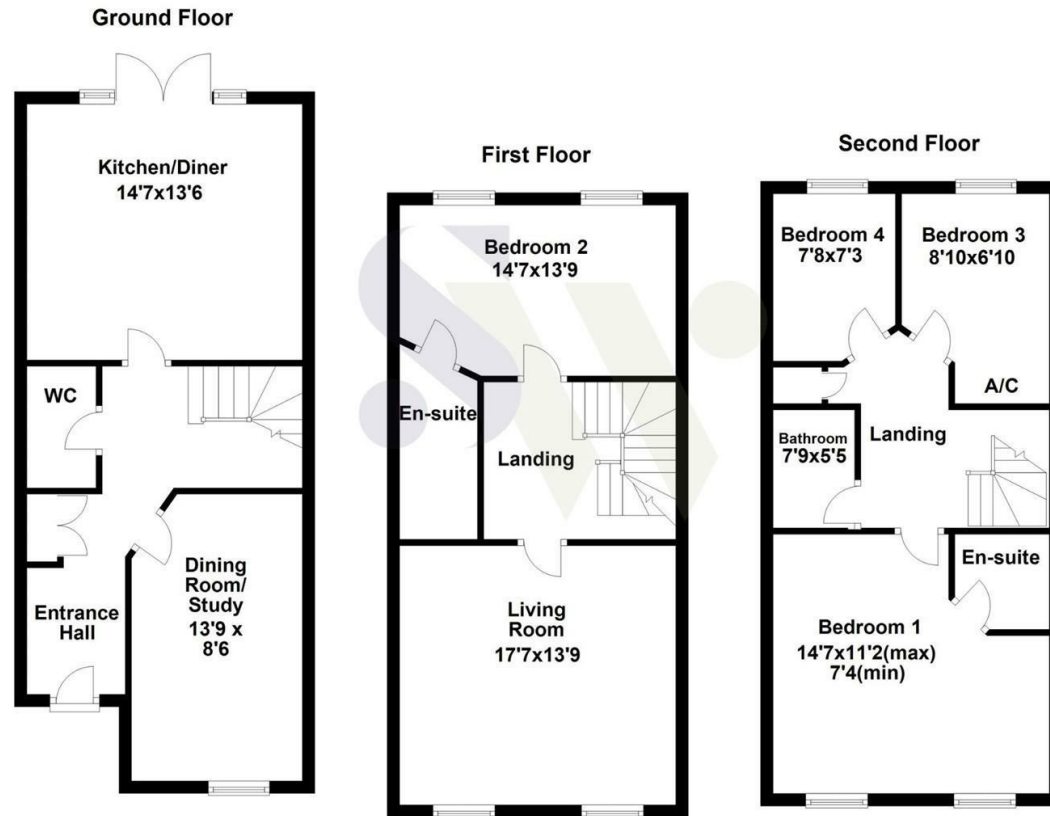


3



2





When you buy with Simpson West, you know **you'll be in safe hands**. From the moment you walk through our doors, we'll make you **feel truly welcome**. Our sales consultants and financial advisors will take you through **every step of the process**, offering **free expert advice** along the way, from help choosing the right mortgage and insurance through to finding your conveyancer. And if you need help selling your home too, **with over 20 years of local experience, you can trust us to get you moving**.



**Simpson  
West**

Making Every  
Journey Personal



01536 202007

[info@simpsonwest.co.uk](mailto:info@simpsonwest.co.uk)

<https://www.simpsonwest.co.uk/>

64 Corporation Street, Corby, Northants, NN17 1NH