



Cambridge Avenue, NW6

£475,000

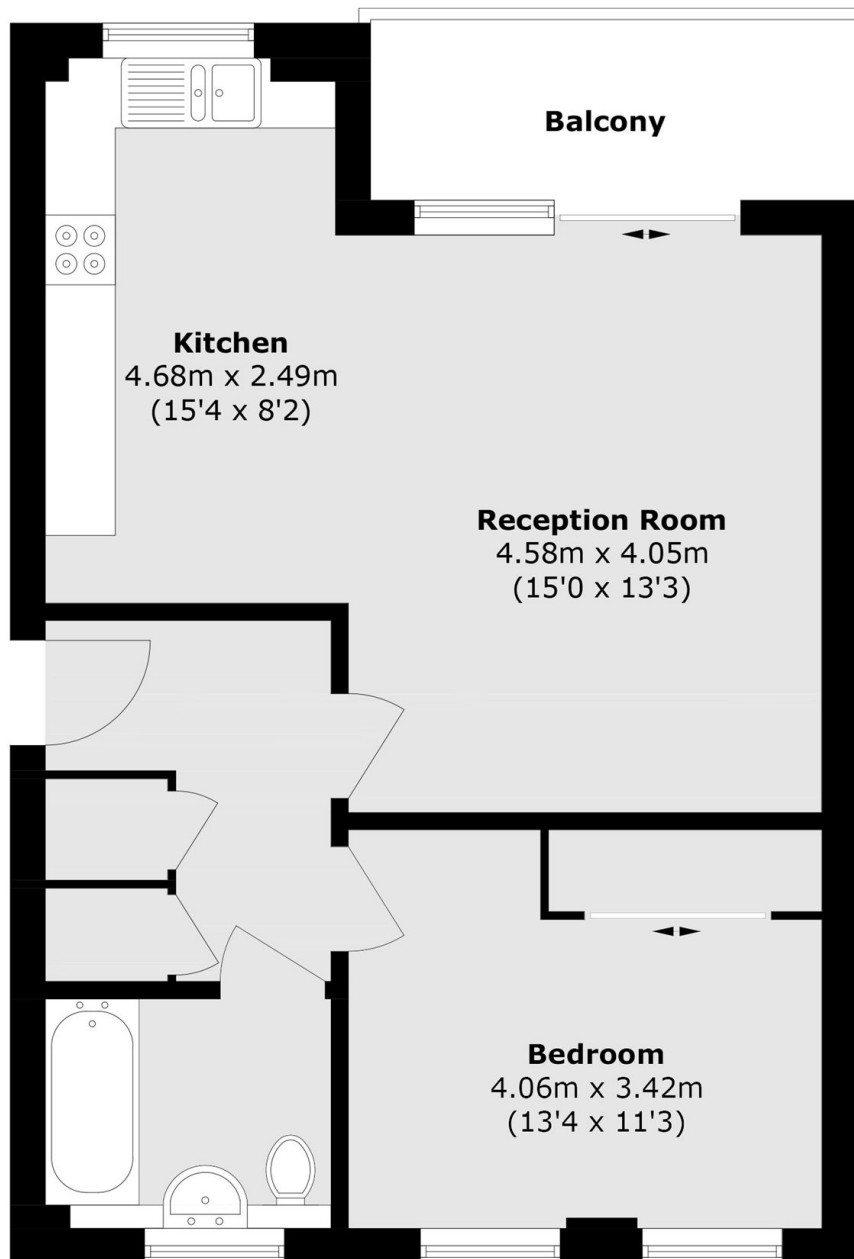
On the second floor of a new build block, this one bedroom apartment comes complete with a open plan kitchen/reception, private balcony, wooden flooring throughout and is available chain free.

Cambridge Avenue is located in between a variety of shops, cafés and bars on Kilburn High Road, Queen's Park and Maida Vale and is home to multiple transport links including bus routes, the tube and Overground lines.

Features

- New Build Block
- Second Floor Flat
- Open Plan Kitchen/Reception
- Private Balcony
- Lift
- Chain Free

Cambridge Avenue, London, NW6



Total area (approx.): 60.5 sq. m (651.2 sq. ft)

Balcony area (approx.): 6.5 sq. m (69.9 sq. ft)