



Earls Court Road, W8

£1,080,000

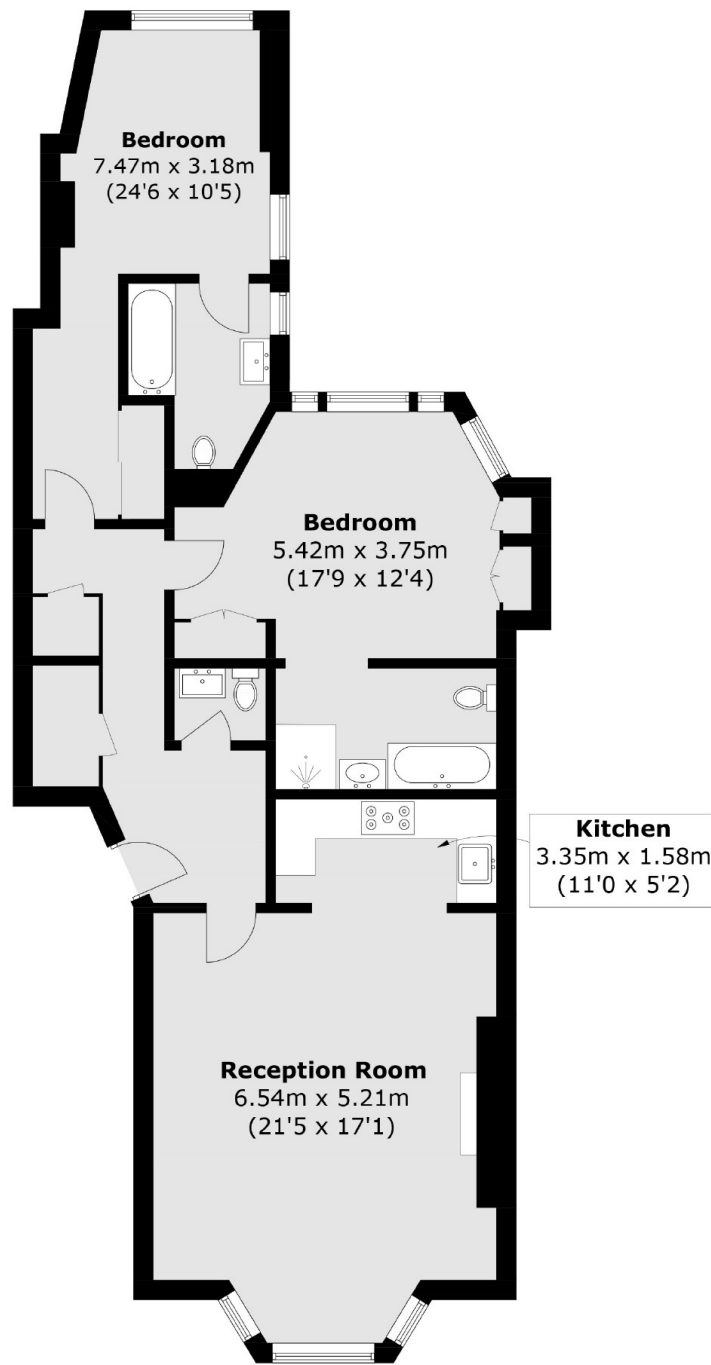
Occupying the raised ground floor of a distinguished Victorian building, this impeccably presented two double-bedroom, two-bathroom apartment combines classic architectural elegance with modern sophistication. The principal rooms are defined by soaring 3.8-meter ceilings and large sash windows, bathing the interiors in natural light and enhancing the sense of space and grandeur. The residence has been thoughtfully maintained and updated, preserving original period features while incorporating contemporary comforts. Both bedrooms offer generous proportions and serene ambiance, complemented by two sleek, modern bathrooms.

Earls Court Road is conveniently situated to access the superb shops and restaurants of Kensington High Street, as well as the many amenities and Earls Court Tube Station which offers excellent links across London.

Features

- High Ceilings
- Abundance Of Natural Light
- Walking Distance Of Amenities
- Recently Refurbished
- Two Bathrooms
- Two Spacious Bedrooms

Earls Court Road, London, W8



Ground Floor

Total area (approx.): 100.9 sq. m (1086 sq. ft)

Dexters

South Kensington
144 Old Brompton Road
London
SW7 4NR
Sales
0207 838 0108

Energy Rating: C. We aim to make our particulars both accurate and reliable. However they are not guaranteed; nor do they form part of an offer or contract. If you require clarification on any points then please contact us, especially if you're traveling some distance to view. Please note that appliances and heating systems have not been tested and therefore no warranties can be given as to their good working order.

 **RICS** | Regulated
Estate Agent
and Letting Agent

[dexters.co.uk](https://www.dexters.co.uk)