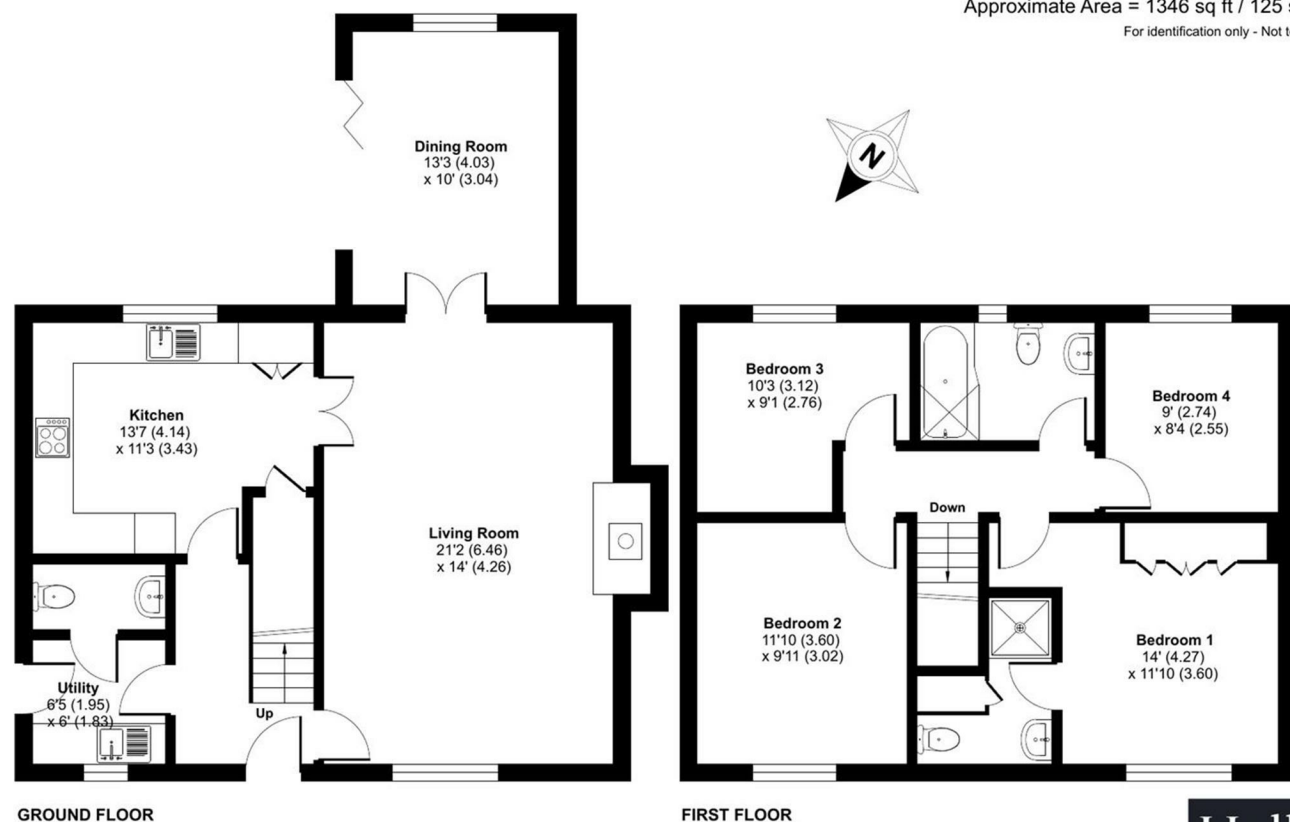


FOR SALE

Halls 1845

2 Old Mill Close, Worthen, Shrewsbury, SY5 9JT

Approximate Area = 1346 sq ft / 125 sq m  
For identification only - Not to scale



Halls 1845

Floor plan produced in accordance with RICS Property Measurement 2nd Edition, Incorporating International Property Measurement Standards (IPMS2 Residential). © rchecom 2025. Produced for Halls. REF: 1297649



FOR SALE

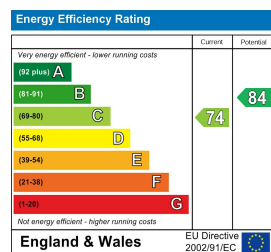
Offers in the region of £385,000

2 Old Mill Close, Worthen, Shrewsbury, SY5 9JT

**Property to sell?** We would be delighted to provide you with a free no obligation market assessment of your existing property. Please contact your local Halls office to make an appointment. **Mortgage/financial advice.** We are able to recommend a completely independent financial advisor,

who is authorised and regulated by the FCA. Details can be provided upon request. **Do you require a surveyor?** We are able to recommend a completely independent chartered surveyor. Details can be provided upon request.

Energy Performance Rating



An attractive and deceptively spacious, much improved detached family home, with landscaped gardens and private parking set amidst a small, well laid out cul-de-sac development on the fringe of a picturesque village.

Halls 1845

01743 236444

Shrewsbury Sales  
2 Barker Street, Shrewsbury, Shropshire, SY1 1QJ  
E: shrewsbury@hallsgb.com



IMPORTANT NOTICE. Halls Holdings Ltd and any joint agents for themselves, and for the Vendor of the property whose Agents they are, give notice that: (i) These particulars are produced in good faith, are set out as a general guide only and do not constitute any part of a contract (ii) No person in the employment of or any agent of or consultant to Halls Holdings has any authority to make or give any representation or warranty whatsoever in relation to this property (iii) Measurements, areas and distances are approximate, Floor plans and photographs are for guidance purposes only (photographs are taken with a wide angled / zoom lenses) and dimensions shapes and precise locations may differ (iv) It must not be assumed that the property has all the required planning or building regulation consents. Halls Holdings, Bowmen Way, Shrewsbury, Shropshire SY4 3DR. Registered in England 06597073.



2 Reception Room/s



4 Bedroom/s



2 Bath/Shower Room/s



- Immaculately presented throughout
- Large reception rooms
- 4 bedrooms
- Landscaped gardens
- Kitchen with breakfast bar
- Idyllic popular village

#### DESCRIPTION

2 Old Mill Close is an attractive modern 4 bedroom family home, set on a small development in centre of this popular rural village. The property has been updated and improved by the current owners with the property now offering a lovely large sitting room with feature brick fireplace and inset log burning stove. The garden room/dining room is located off here and is located at the rear of property with views of the rear gardens and bi-folding doors to the rear patio. The updated kitchen has a range of built in appliances, a breakfast bar and on the ground floor there is also a useful utility room with guest WC.

On the first floor there are 4 bedrooms and a family bathroom. The well portioned principal bedroom has built in wardrobes and an en-suite shower room and there are 3 further double bedrooms all serviced by the family bathroom.

#### ACCOMMODATION

##### ENTRANCE HALL

With staircase to first floor and doors off and to:-

##### LIVING ROOM

A front to back spacious room with feature brick fireplace, window overlooking the front and french doors through to:-

##### DINING/GARDEN ROOM

With bi-folding doors out to the rear gardens.

##### KITCHEN

Providing an attractive range of cream front eye and base level cupboards with generous work surface area over and incorporating a one and half bowl stainless steel sink unit and drainer with mixer tap over, hob unit with extractor hood over, built in oven. Space for American style fridge freezer. Central breakfast bar eating area with storage cupboards under.

##### UTILITY ROOM

Providing a continuation of the kitchen cream fronted units, stainless steel sink unit and drainer, space and connection for washing machine.

#### FIRST FLOOR LANDING

With doors off and to:-

##### BEDROOM ONE

With built in wardrobes and door to:-

##### ENSUITE SHOWER ROOM

Providing a white suite comprising low level WC, pedestal wash hand basin and shower cubicle. Linen cupboard.

##### BEDROOM TWO

Window over looking the front.

##### BEDROOM THREE

Window over looking rear gardens.

##### BEDROOM FOUR

Window over looking rear gardens.

##### BATHROOM

Providing a white suite comprising low level WC, pedestal wash hand basin and panelled bath with mains fed shower over, splash screen. Part tiled walls.

##### OUTSIDE

The property is approached over a private made up cul-de-sac road, which leads to the private driveway parking. Flagged pathways extend partly across the front of the house and down to the rear.

##### THE GARDENS

The rear gardens have been landscaped and have a lawned area, play area, good size patio and storage shed.

#### GENERAL REMARKS

#### ANTI-MONEY LAUNDERING (AML) CHECKS

We are legally obligated to undertake anti-money laundering checks on all property purchasers. Whilst we are responsible for ensuring that these checks, and any ongoing monitoring, are conducted properly; the initial checks will be handled on our behalf by a specialist company, Movebutler, who will reach out to you once your offer has been accepted. The charge for these checks is £30 (including VAT) per purchaser, which covers the necessary data collection and any manual checks or monitoring that may be required. This cost must be paid in advance, directly to Movebutler, before a memorandum of sale can be issued, and is non-refundable. We thank you for your cooperation.

#### FIXTURES AND FITTINGS

Only those items described in these particulars are included in the sale.

#### TENURE

Freehold. Purchasers must confirm via their solicitor.

#### SERVICES

Mains water, electricity and drainage are understood to be connected. LPG gas fired central heating with a private underground tank. None of these services have been tested.

#### COUNCIL TAX

The property is in Council Tax band 'D' on the Shropshire Council Register.

#### VIEWINGS

By appointment through Halls, 2 Barker Street, Shrewsbury, SY1 1QJ.