

[www.jeffreygross.co.uk](http://www.jeffreygross.co.uk)

CARDIFF

VALE

CAERPHILLY

BRISTOL



*Champs Sur Marne*

BRADLEY STOKE



Comments by Ms Olivia Melville-Brown



**Property Specialist**  
Ms Olivia Melville-Brown  
Branch manager

[o.melvillebrown@thepropertyoutlet.com](mailto:o.melvillebrown@thepropertyoutlet.com)

Comments by the Homeowner







# Champs Sur Marne

Bradley Stoke, Bristol, BS32 9BY

PCM

£2,450 PCM



4 Bedroom(s)



2 Bathroom(s)



1399.32 sq ft

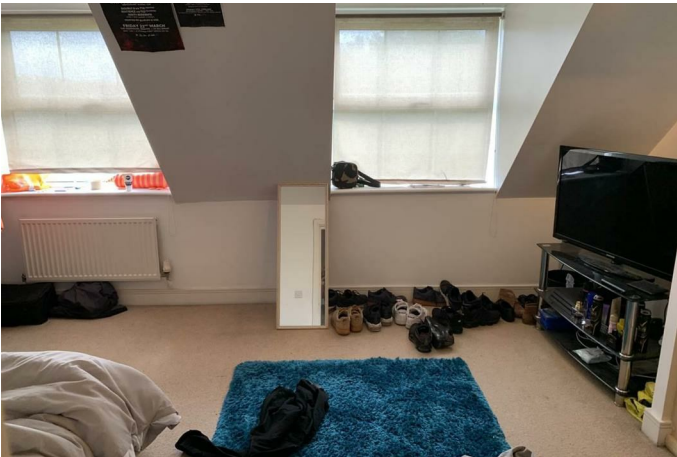


Contact our  
*Property Outlet Branch*  
0117 935 4565

\* AVAILABLE 18.07.2026 \*

FOUR BEDROOM TOWN HOUSE WITH PARKING! The property outlet are keen to offer to the rental market this FANTASTIC home that comprises ENTRANCE HALL, CLOAKROOM/WC, BEDROOM 1 & a KITCHEN/DINING ROOM. To the first floor there is a LARGE LIVING ROOM and MASTER BEDROOM with EN-SUITE SHOWER ROOM/WC. To the second floor there are a further TWO DOUBLE BEDROOMS & a BATH/SHOWER ROOM/WC. This well presented property is offered PART-FURNISHED with WHITE GOODS that include a WASHING MACHINE, ELECTRIC HOB/OVEN & a DISHWASHER. The property further benefits from a REAR GARDEN & OFF ROAD PARKING. Sorry no pets.

Holding Deposit £565.38





CARDIFF

VALE

CAERPHILLY

BRISTOL

[www.jeffreygross.co.uk](http://www.jeffreygross.co.uk)







Energy Efficiency Rating		
	Current	Potential
Very energy efficient - lower running costs		
(92 plus) A		85
(81-91) B		
(69-80) C	74	
(55-68) D		
(39-54) E		
(21-38) F		
(1-20) G		
Not energy efficient - higher running costs		
England & Wales		EU Directive 2002/91/EC

