



Hoxton Square, N1

£3,500 Per calendar month

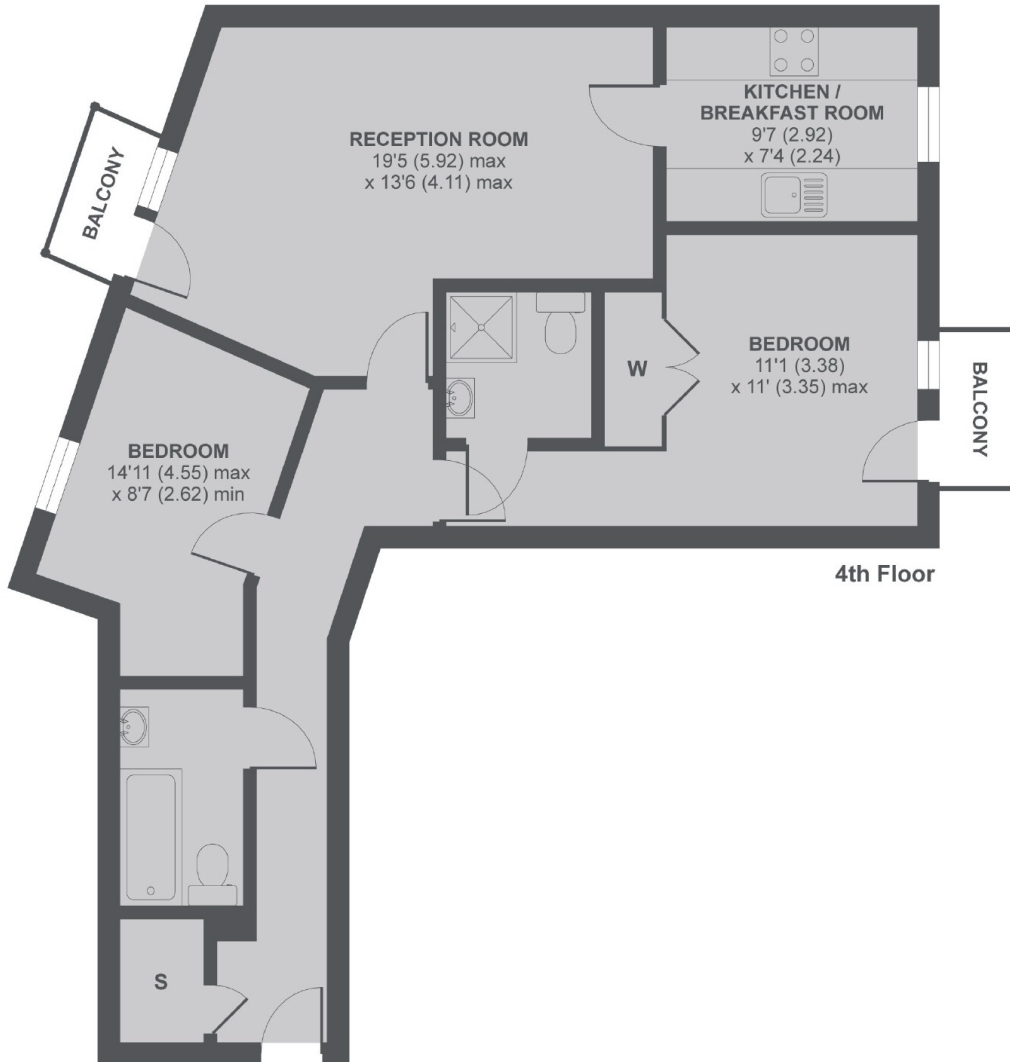
This spacious two double bedroom apartment is perfectly located in the ever popular Hoxton Square. Comprising of two large double bedrooms, two bathrooms (one ensuite), modern fitted kitchen with integrated appliances and granite work surfaces, wood floors throughout and two private balconies. This property also has a parking space available.

The property is close to all the shops, bars and transport links in Hoxton and Shoreditch.

Features

- Two Double Bedrooms
- Two Bathrooms
- Two Private Balconies
- Wooden Floors
- Hoxton Square
- Top Floor

Hoxton Square, London, N1



Hoxton Square, London, N1

MAIN HOUSE APPROX FLOOR AREA 718 SQ.FT 66.7 SQ.M

Copyright nichecom.co.uk 2017 REF : 218979

Dexters

Shoreditch
44 Great Eastern Street
London
EC2A 3EP

Lettings
0207 483 6372

Energy Rating: C. We aim to make our particulars both accurate and reliable. However they are not guaranteed; nor do they form part of an offer or contract. If you require clarification on any points then please contact us, especially if you're traveling some distance to view. Please note that appliances and heating systems have not been tested and therefore no warranties can be given as to their good working order.

 **RICS** | Regulated
Estate Agent
and Letting Agent

dexters.co.uk