

ANTHONY JAMES MANSEY

Residential Sales & Lettings



Lime Tree Road

Hounslow, TW5 0TD

£612,000

Freehold

Council Tax Band D

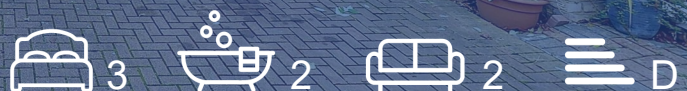
Situated in a pleasant cul-de-sac off of the Great West Road.

A 1930's built semi detached house with off street parking and comprising on the ground floor of two reception rooms, extended kitchen diner, conservatory and shower room with WC. The first floor provides three bedrooms, the front principal bedroom has a staircase that leads to a converted loft which our vendor has used as a bedroom and study. There is also a family bathroom. This property has gas central heating. To the rear is a very good sized garden with brick built storage unit. Osterley tube station is on the Piccadilly line and regularly serves Heathrow and Central London.

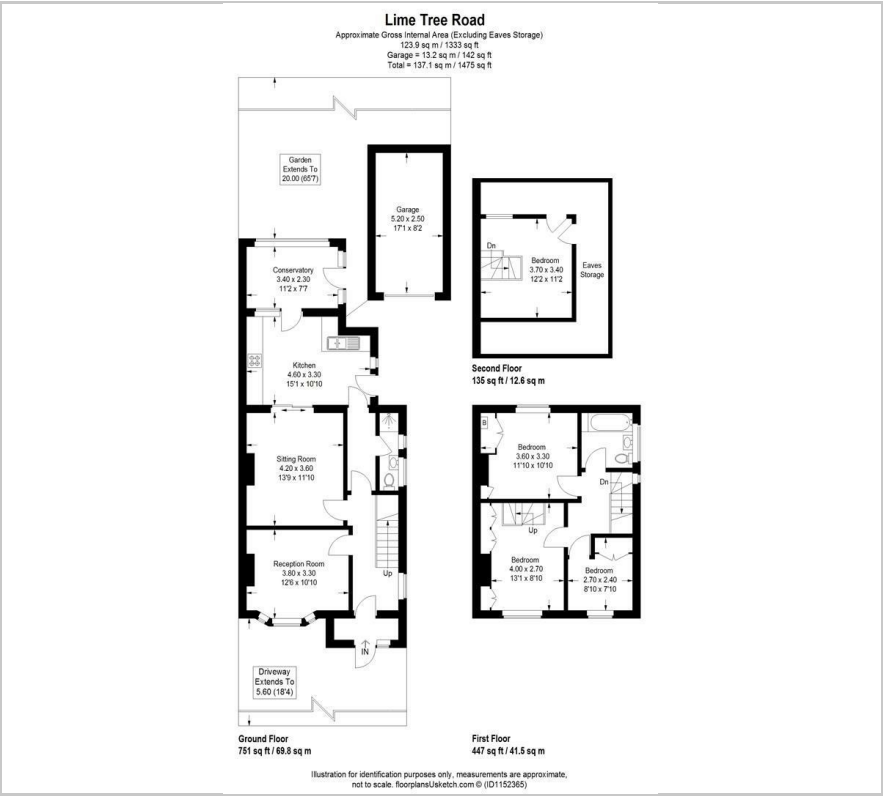
- A 1930's Built Semi Detached House
- Off Street Parking
- Three Bedrooms
- Converted Loft to Form Additional Space that has been used as a Bedroom & Study
- Two Reception Rooms
- Extended Kitchen Diner
- Conservatory
- Gas Central Heating
- Large Rear Garden
- Osterley Tube on the Piccadilly Line

Viewing

Please contact our Sales Office on 020 8847 0488 if you wish to arrange a viewing appointment for this property or require further information.



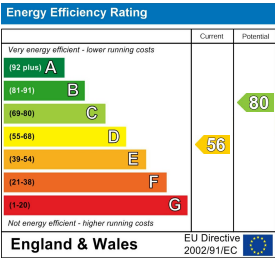
Floor Plan



Area Map



Energy Efficiency Graph



These particulars, whilst believed to be accurate are set out as a general outline only for guidance and do not constitute any part of an offer or contract. Intending purchasers should not rely on them as statements of representation of fact, but must satisfy themselves by inspection or otherwise as to their accuracy. No person in this firms employment has the authority to make or give any representation or warranty in respect of the property.