



BISLEY

Guide Price £630,000

**Tucked away within a highly sought-after cul-de-sac, this attractive four-bedroom detached residence offers an exceptional setting for family life, combining privacy, space, and a peaceful environment.
NO ONWARD CHAIN.**



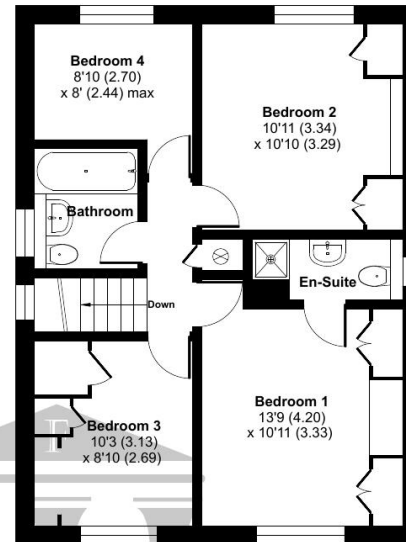
Quince Drive, Bisley, Woking, GU24

Approximate Area = 1235 sq ft / 114.7 sq m

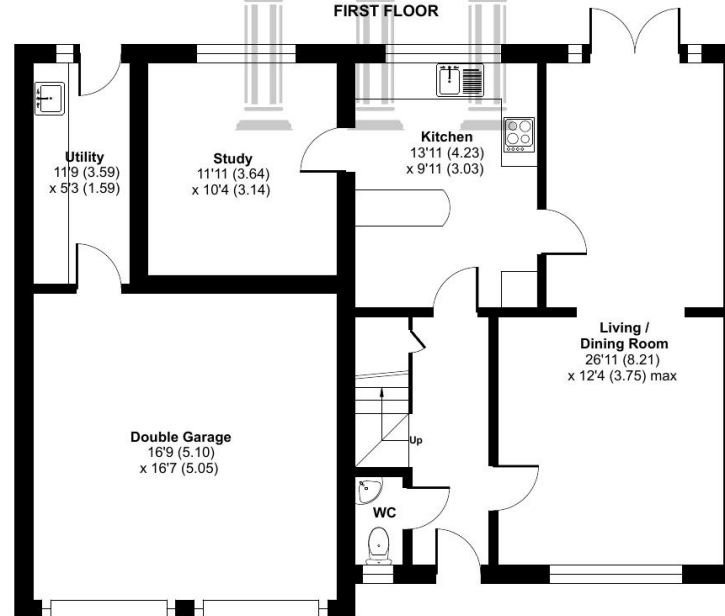
Garage = 344 sq ft / 31.9 sq m

Total = 1579 sq ft / 146.6 sq m

For identification only - Not to scale



FIRST FLOOR



GROUND FLOOR

Quince Drive, Bisley, Woking, Surrey, GU24

- **4 Bedroom detached family home in a highly desirable cul-de-sac setting**
- **Kitchen/breakfast room**
- **Three versatile reception rooms**
- **Principal bedroom with en-suite**
- **Downstairs Cloakroom**
- **Driveway parking leading & double-width garage**
- **Mature, secluded rear garden**
- **NO ONWARD CHAIN**

Tucked away within a highly sought-after cul-de-sac, this attractive four-bedroom detached residence offers an exceptional setting for family life, combining privacy, space, and a peaceful environment. Requiring modernisation throughout, the property presents a superb opportunity for buyers to refurbish and personalise, creating a home tailored to their own taste and style. Ideally positioned for those seeking a quiet yet well-connected location, the property enjoys a welcoming presence with a generous driveway providing ample off-road parking and access to a double-width garage.

Internally, the home is thoughtfully arranged to cater to both everyday living and entertaining, offering a sociable space for informal dining, while three versatile reception rooms provide flexibility for formal entertaining, relaxation, or a dedicated home office. A convenient downstairs cloakroom completes the ground floor accommodation.

Upstairs, four well-proportioned bedrooms provide comfortable and adaptable living for families of all sizes. The principal bedroom benefits from its own en-suite shower room, creating a private retreat, while the remaining bedrooms are served by a modern family bathroom, all finished to a practical and comfortable standard.

To the rear, the property truly comes into its own, with a mature and secluded garden offering a wonderful outdoor sanctuary. Thoughtfully landscaped and enjoying a high degree of privacy, it provides the perfect setting for alfresco dining, children's play, or simply unwinding in tranquil surroundings. The property is offered to the market with NO ONWARD CHAIN.

Conveniently located within easy reach of local schools and amenities, this property offers excellent connectivity, with convenient access to the M3 motorway (approximately 2 miles away) and Brookwood Mainline Station, providing a direct service to London Waterloo in around 30 minutes. The location ensures easy access to both Woking and Guildford, while the village itself features a primary school, with reputable secondary schools such as Gordon's in West End and Winston Churchill in St. Johns nearby. Everyday essentials are well catered for with a local Sainsbury's and a renowned continental butcher in the village, while a larger Sainsbury's superstore can be found in nearby Knaphill. Nature enthusiasts will appreciate the surrounding countryside, including Brentmoor Heath and Stafford Lake, offering acres of scenic common land for outdoor recreation.

Council Tax Band F - EPC Rating C - Tenure: Freehold

We confirm that these particulars of sale have been prepared as a general guide only and we have not carried out a detailed survey or tested the specified services, equipment and appliances. Room sizes should not be relied upon when ordering carpets, curtains or other furnishings. Photographs are reproduced for general information and it must not be inferred that any item shown is included for sale with the property.



