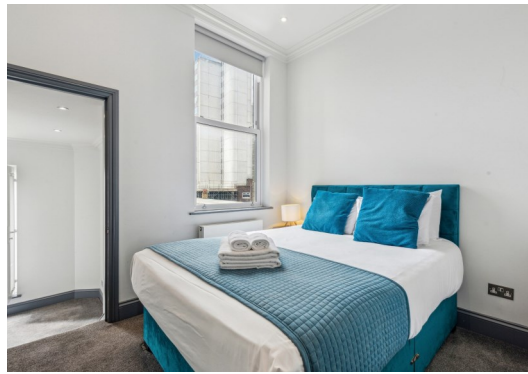


Ongar Road,
West Brompton, London, SW6





Ongar Road

West Brompton, London, SW6

Price Guide: £525,000

Ongar Road, SW6

Approximate gross internal area
43.31 sq m / 466 sq ft

Key :
CH - Ceiling Height



First Floor

Not to scale, for guidance only and must not be relied upon as a statement of fact.
All measurements and areas are approximate only

A stunning recently refurbished one bedroom first floor period conversion flat finished to a high specification finish with a balcony and the benefit of an additional spacious study/snug, located on a popular residential road within a short walk to West Brompton & Earls Court underground stations. The accommodation benefits from a Banham intercom system and comprises a fabulous open plan bay fronted living room with herringbone flooring, a stylish fully fitted kitchen with Siemens appliances, a generous double bedroom, a luxurious bathroom and the separate study/snug which is ideal for versatile use as either office/bedroom/TV room. Further benefits include excellent storage throughout. This is the perfect flat for both first time buyers and investors. Ongar Road is located moments from a variety of boutique shops and restaurants, as well as offering easy access to the A4/M4 and Central London and The West End. 999 year lease & No onward chain.

Stunning, recently refurbished one bedroom period conversion flat with balcony

Popular location | Bay fronted living room with herringbone flooring & fireplace | Stylish kitchen

Ideal first time buy/investment | Moments from boutique shops & restaurants | No onward chain

Close to transport & numerous amenities | 466 Sq. Ft. (43.31 Sq. M.) Leasehold 999 years

Full Energy Performance Certificate available on

All viewings by appointment through our **Hammersmith Office**:

T: 020 7385 7000
E: hammersmith@lawsonrutter.com

192 Fulham Palace Road, London W6 9PA

In accordance with the Property Misdescription Act 1991, we wish to emphasise that the information given in these particulars is intended to help you decide whether you wish to view this property. Whilst every care is taken to ensure the accuracy of these particulars please note that all measurements are approximate and we are, for the accuracy of other information, reliant on what the seller has provided. We strongly recommend that you rely on your own inspections and those of your advisors to establish the details of any aspects which are of particular importance. Please note that we have not undertaken any survey of the property or the appliances within it and the buyer must rely on their own investigations prior to exchange of contracts.

