



13 Hope Drive
Barton Seagrave, NN15 4AP



Simpson & Partners

Nestled in the desirable area of Barton Seagrave, this remarkable four double bedroom detached home on Hope Drive is a true gem. Built in 2024 by the esteemed David Wilson Homes, this property offers a perfect blend of modern design and comfortable living.

As you enter, you are greeted by three spacious reception rooms, providing ample space for both relaxation and entertaining. The heart of the home is undoubtedly the impressive 21ft kitchen/family room, which is ideal for family gatherings and social occasions. This well-appointed area is designed to be both functional and inviting, making it the perfect spot for culinary adventures and cherished memories.

The property boasts four generously sized double bedrooms, ensuring that everyone has their own private sanctuary. The 16ft master bedroom is particularly noteworthy, offering a tranquil retreat with plenty of space for furnishings. With three bathrooms, including en-suite facilities, morning routines will be a breeze for the entire household.

Outside, the home overlooks a picturesque green area, providing a serene backdrop for outdoor activities and relaxation. The ample parking space, including a double garage, ensures convenience for residents and guests alike.

This stunning detached house is not just a home; it is a lifestyle choice, offering modern living in a peaceful setting. With its contemporary features and thoughtful design, this property is sure to appeal to families and professionals alike. Do not miss the opportunity to make this exceptional home your own.

Price £595,000



4



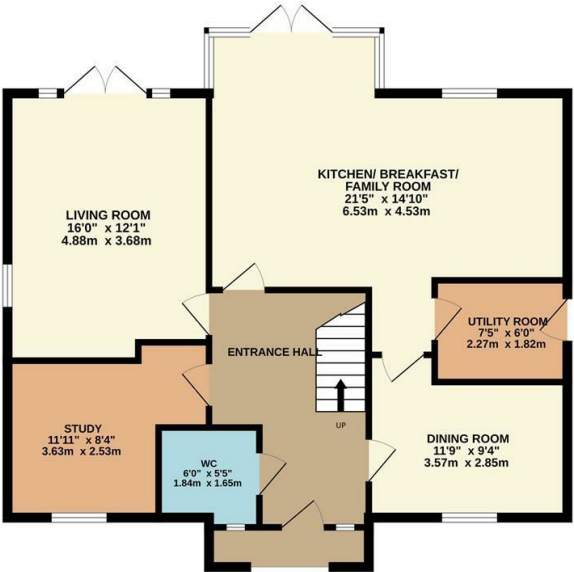
3



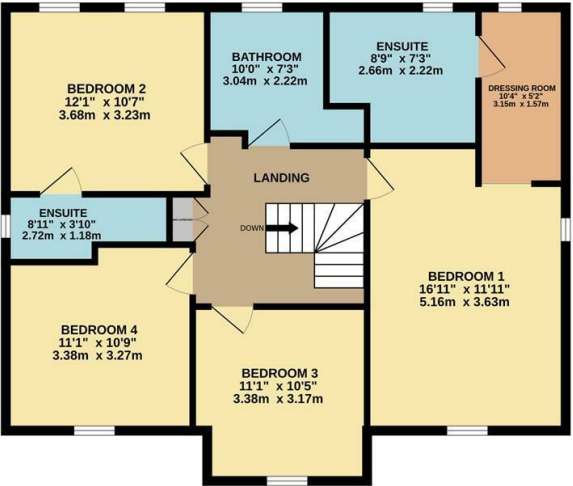
3



GROUND FLOOR
897 sq.ft. (83.3 sq.m.) approx.

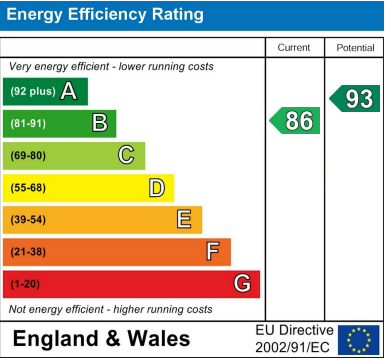


1ST FLOOR
915 sq.ft. (85.0 sq.m.) approx.



TOTAL FLOOR AREA: 1812 sq.ft. (168.3 sq.m.) approx.

Whilst every attempt has been made to ensure the accuracy of the floor plan contained here, measurements of doors, windows, rooms and any other items are approximate and no responsibility is taken for any error, omission, or mis-statement. The plan is copyright to Simpson and Partners and is for illustrative purposes and should only be used as such by any prospective purchaser. The services, systems and appliances shown have not been tested and no guarantee as to their operability can be given
Made with Metropix ©2024



When you buy with Simpson and Partners, you know **you'll be in safe hands**. From the moment you walk through our doors, we'll make you **feel truly welcome**. Our sales consultants and financial advisors will take you through **every step of the process**, offering **free expert advice** along the way, from help choosing the right mortgage and insurance through to finding your conveyancer. And if you need help selling your home too, **with over 20 years of local experience, you can trust us to get you moving**.



**Simpson
& Partners**

Making Every
Journey Personal



01536 518200

kettering@simpsonandpartners.co.uk

<https://www.simpsonandpartners.co.uk/>

1 Silver Street, Kettering, Northants, NN16 0BN