



Little Wynters, Hastingwood Road, Hastingwood

CM17 9JN

Price Guide £1,500,000



stevenoates.com



Little Wynters Hastingwood Road, Hastingwood, Essex, CM17 9JN

This substantial detached family home occupies an exceptional plot of nearly 5 acres, nestled in the heart of beautiful countryside. Owned by the same family for almost 60 years, the property offers spacious and versatile accommodation, including a self-contained two bedroom ground floor annexe, ideal for multi-generational living or guest use. While the home has been carefully maintained over the years, its generous proportions and expansive grounds present an exciting opportunity for remodelling or further development (subject to the necessary consents). The meticulously maintained gardens feature a variety of specimen trees and additional highlights include a large detached double garage and a paddock, making the property ideal for those seeking space, seclusion, and countryside living.

Situated in the semi-rural hamlet of Hastingwood, this property enjoys a convenient location just 1.5 miles from Junction 7 of the M11, providing easy access to the A1 to the north, and the M25 and Central London to the south.

Local amenities include The Rainbow and Dove, a charming pub located just over half a mile away, known for its welcoming atmosphere and quality pub food. The nearby village of Matching Green is home to the highly regarded Chequers Pub, which features a popular menu, a spacious garden, and a lovely terrace.

The property is well positioned for commuters, with regular train services to London Liverpool Street available from both Harlow and Epping stations. These towns also offer a wide range of shopping, dining, and sporting facilities.

Nature lovers will appreciate the area's extensive network of footpaths, offering picturesque countryside walks. Stansted Airport, London's third-largest international airport, is conveniently located approximately 10 miles away.



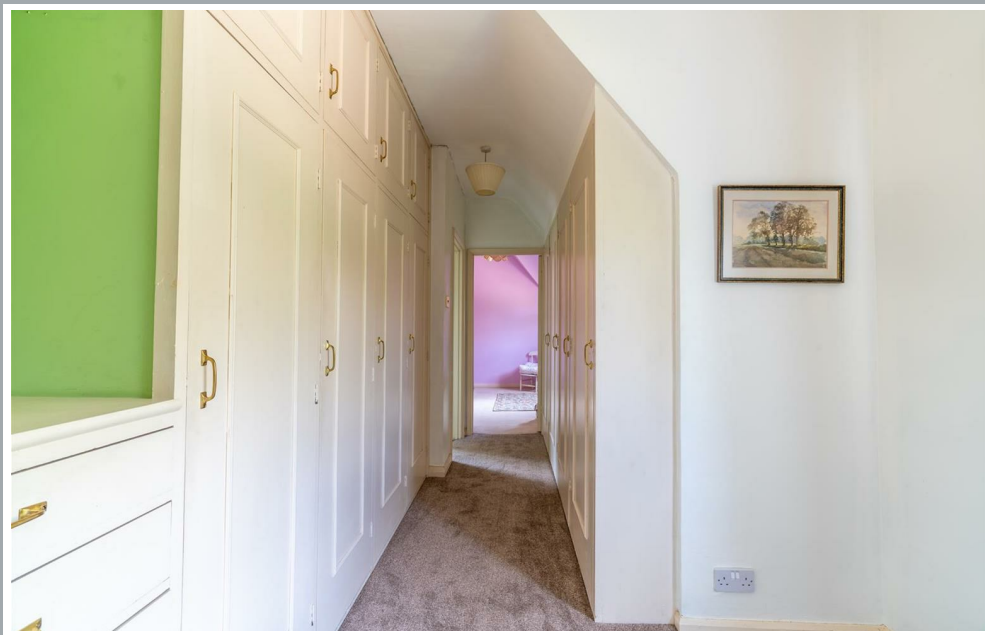
70 Fore Street, Hertford, Hertfordshire, SG14 1BY



70 Fore Street, Hertford, Hertfordshire, SG14 1BY



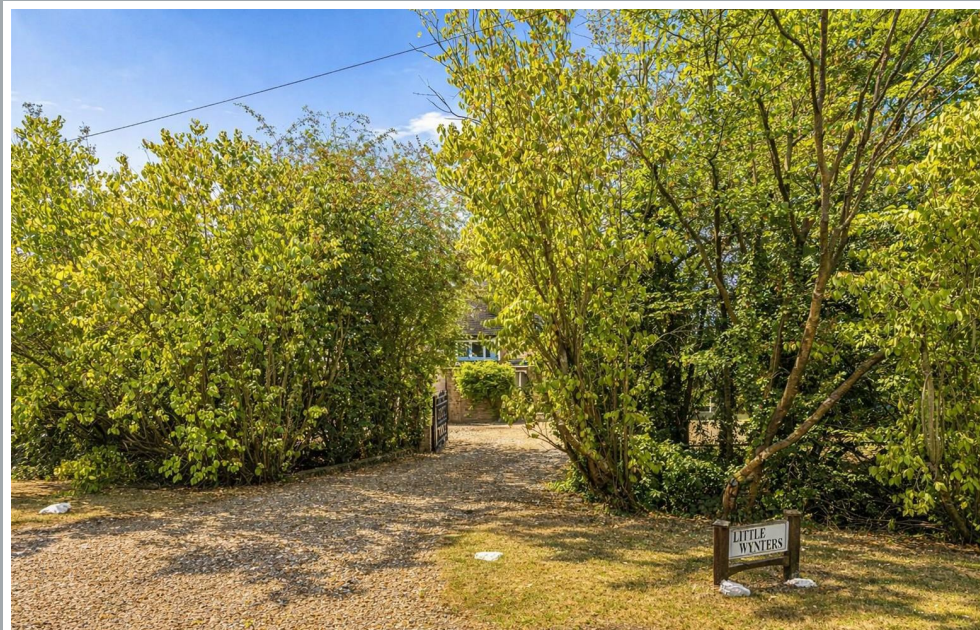
70 Fore Street, Hertford, Hertfordshire, SG14 1BY



70 Fore Street, Hertford, Hertfordshire, SG14 1BY



70 Fore Street, Hertford, Hertfordshire, SG14 1BY



70 Fore Street, Hertford, Hertfordshire, SG14 1BY



70 Fore Street, Hertford, Hertfordshire, SG14 1BY



70 Fore Street, Hertford, Hertfordshire, SG14 1BY



EXCLUDED AREAS: GARAGE: 43 m²/466 sq ft
SIZE AND DIMENSIONS ARE APPROXIMATE, ACTUAL MAY VARY

These particulars, whilst believed to be accurate are set out as a general outline only for guidance and do not constitute any part of an offer or contract. Intending purchasers should not rely on them as statements of representation of fact, but must satisfy themselves by inspection or otherwise as to their accuracy. No person in this firm's employment has the authority to make or give any representation or warranty in respect of the property.



stevenoates.com