



Guide Price
£210,000

Leasehold

3x  2x  1x 

**Park Mews Apartments,
Park Road, Herne Bay,
Kent, CT6**

OVER 60?

Secure this property
for up to **59% less!**

Wards
Helping you move forwards



Main features

- 1 Allocated parking space
- Set in central Herne Bay location
- Large open-plan living with separate Lounge, Kitchen and Dining areas
- En-suite shower room to bedroom 1
- Property boasts its own private entrance

Accommodation

FIRST FLOOR

Entrance Hallway

Kitchen/Lounge/Diner: 16'7 x 15'7
(5.06m x 4.75m)

Bathroom

Bedroom 1: 13'8 x 10'6 (4.17m x 3.20m)

En-Suite Shower Room

Bedroom 3: 11'3 x 11'1 (3.43m x 3.38m)

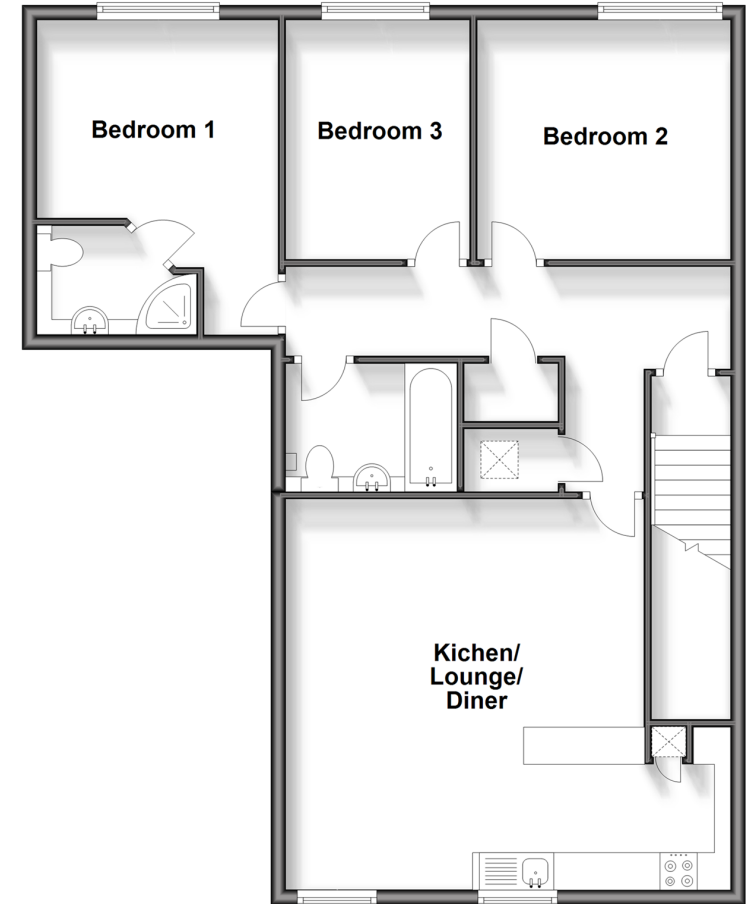
Bedroom 2: 10'4 x 7'9 (3.15m x 2.36m)

OUTSIDE

Allocated Parking Space

First Floor

Approx. 83.9 sq. metres (903.2 sq. feet)



Call Herne Bay - 01227 361226 ■ wardsof Kent.co.uk

- Legal advice should be taken to verify fixtures/fittings, planning, alterations and/or lease details
- Appliances & services are untested, dimensions are approximate and floor plans are not to scale
- Through a Homewise Home For Life Plan people aged 60+ can secure this property for up to 50% less, by purchasing a Lifetime Lease.



11238526/20251002/EM/AT