



OAKFIELD



Ore Valley Road, Hastings, TN34 3FD

£1,495 Per Calendar Month



Ore Valley Road, Hastings, TN34 3FD

A well-presented family semi-detached home located in the popular residential area of Ore, conveniently positioned close to local schools, and a variety of local shops. The property also offers easy road access to Hastings Old Town and Ore Village.

The ground floor features a spacious living room with patio doors opening onto the rear garden, a separate modern kitchen, and a convenient downstairs WC.

Upstairs, the first floor comprises three bedrooms, including one with an en-suite shower room, along with a contemporary family bathroom.

Further benefits include gas central heating, plenty of storage, double glazing throughout, two off road parking spaces and side access to the rear garden.

Please note:
An annual household income of £44,850 will be required for the affordability criteria of this property.
The minimum tenancy length is 6 Months.
Available Early February 2025.





Living Room

18'1" x 15'3" (5.51m x 4.65m)

Kitchen

10'9" x 8'0" (3.28m x 2.44m)

WC

6'9" x 3'2" (2.06m x 0.97m)

Bedroom Two

10'8" x 8'6" (3.25m x 2.59m)

Bedroom One

11'8" x 8'6" (3.56m x 2.59m)

Ensuite

8'6" x 4'4" (2.59m x 1.32m)

Bedroom Three

9'2" x 6'8" (2.79m x 2.03m)

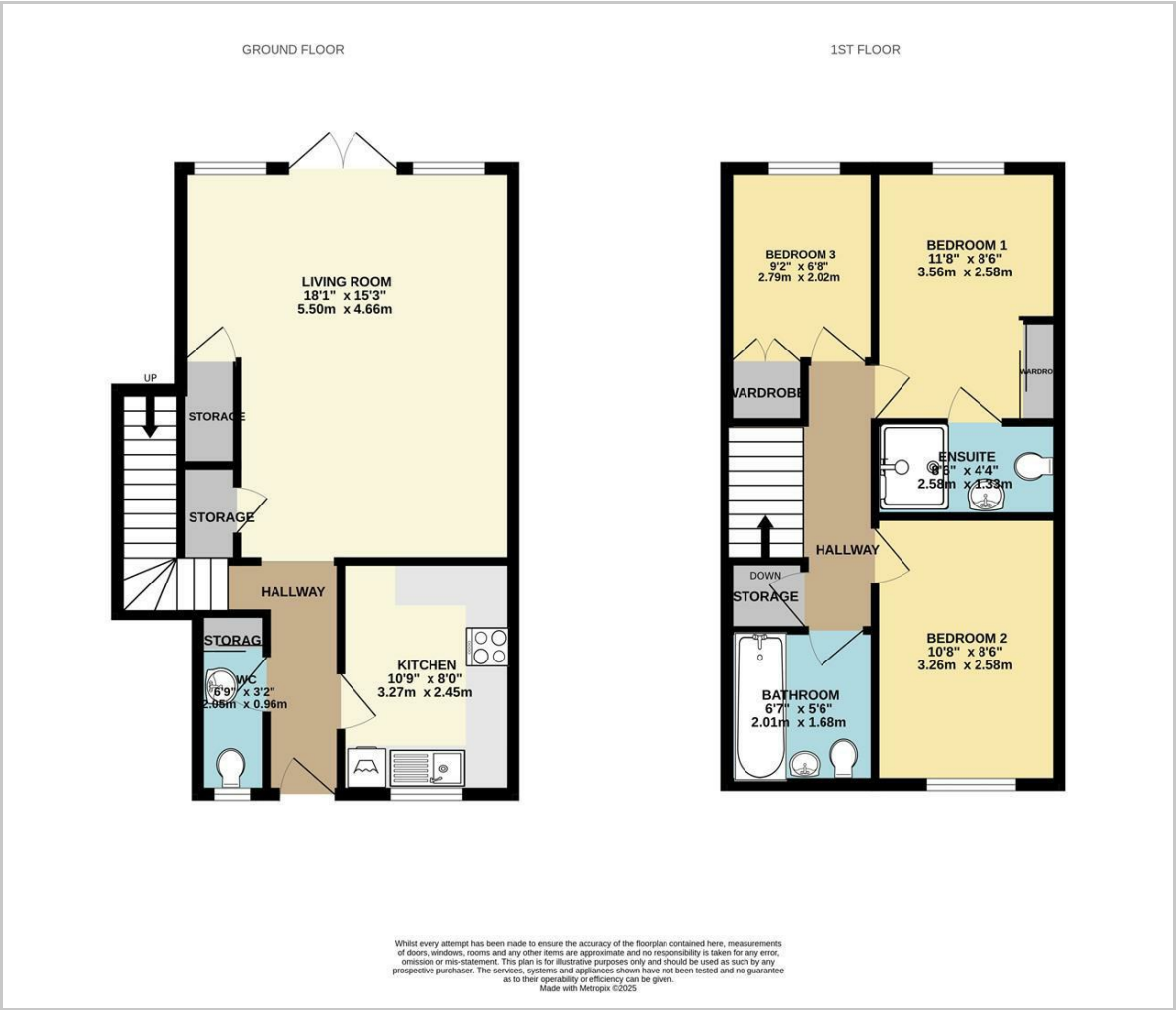
Bathroom

6'7" x 5'6" (2.01m x 1.68m)

Council Tax Band C - £2,270.35 Per Annum



Floor Plan

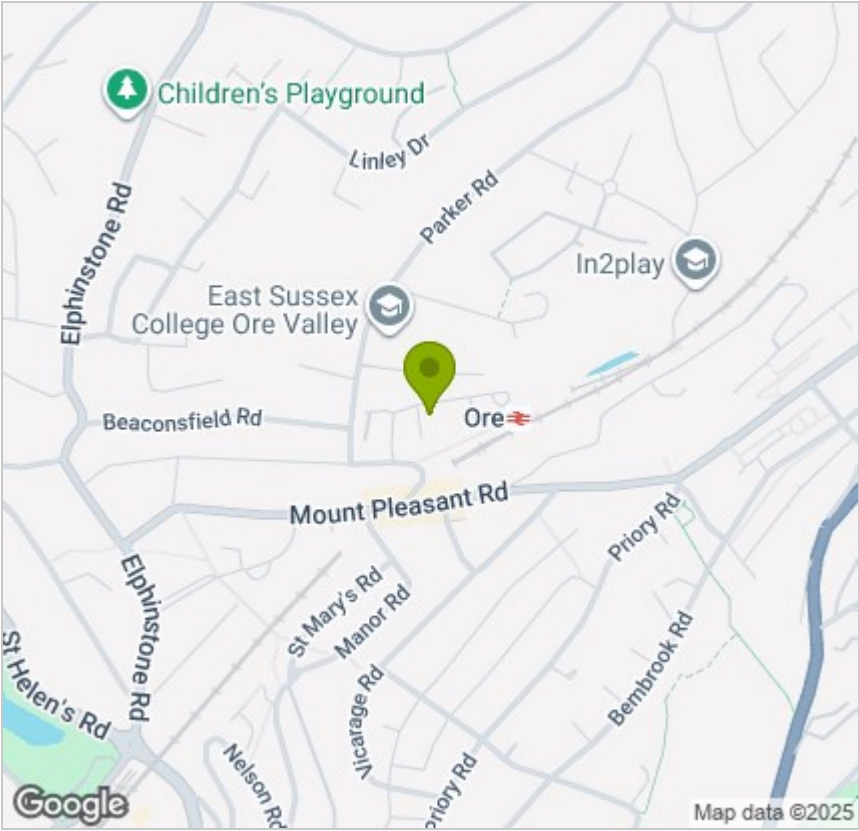


Viewing

Please contact us on 01424 446644 if you wish to arrange a viewing appointment for this property or require further information.

These particulars, whilst believed to be accurate are set out as a general outline only for guidance and do not constitute any part of an offer or contract. Intending purchasers should not rely on them as statements of representation of fact, but must satisfy themselves by inspection or otherwise as to their accuracy. No person in this firms employment has the authority to make or give any representation or warranty in respect of the property.

Area Map



Energy Efficiency Graph

