



Flat 21, St Leonards Court Alfred Street, Lancaster, LA1 1FD

A well-proportioned one bedroom ground floor apartment in a desirable over 55s retirement complex in Lancaster. Within walking distance of the vibrant city centre, near to local shops and amenities, and with excellent transport links, you are perfectly placed to make the most of the local area. Two nearby supermarkets make keeping on top of shopping a breeze with Lancaster retail park at the end of the road offering a range of retail outlets. You can enjoy the stunning natural surroundings with walks along the River Lune, and open green spaces including Williamson's Park within easy reach.

The apartment boasts a private entrance to the rear, allowing you to come and go as you please with direct access to the car park making it easy and convenient to unload groceries. A well-proportioned living room offers ample space for family gatherings and a comfortable room to host visitors, with flooring left for you to choose. A practical kitchen sits through an open archway, with appliances including an unused Logic oven and a four ring electric hob, with new vinyl flooring providing an easy to clean and stylish surface. The bathroom of the property has been renovated by the current owners including new drainage, wall coverings and fixtures, making it a pleasure to get ready in each day. A central hallway features a deep storage room at the end beside the large double bedroom with fitted storage and white painted walls giving it a fresh, inviting look.

Communal gardens and lounges mean you can socialise with fellow residents and join in with the range of activities that the development run, meaning you don't have to travel far to keep up an active social life.

Don't miss out on making this conveniently located and well-proportioned apartment your new home, contact us today to book a viewing!



Hallway

21'3" x 3'0" (6.48 x 0.93)

A carpeted hallway connects the living and sleeping spaces, with an electric radiator and two ceiling lights making it a bright, welcoming entrance to the home. An external door leads in from the communal building, with a wall-mounted telecom and alarm system giving you peace of mind if living here alone. Decorative coving and neutral painted walls give you a blank canvas to design the space to your taste.

Living Room

14'10" x 10'10" (4.53 x 3.32)

A well-proportioned living room offers space for entertaining and relaxing. There's ample room for multiple seating and storage options so you can design the room to fit your lifestyle, with flooring left to add allowing you to choose your own finish. An electric fire sits on a marble hearth in a white surround and forms the focal point of the room as well as adding to the comfort of the space. A double glazed window on the rear aspect provides plenty of natural light with a glass paned external door offering direct access to the car park behind, great for unloading shopping. Two wall lights sit either side of the fireplace, with an electric radiator completing the inviting reception room.

Kitchen

7'9" x 6'10" (2.37 x 2.10)

A well-appointed kitchen sits off the living room through an open archway, allowing you to socialise while you prepare food. Appliances include a Logik integrated oven, four ring ceramic hob and a stainless steel sink and drainer. There's no shortage of storage space with cabinetry on three sides offering space for food storage and kitchen equipment. A new vinyl floor has been laid offering a stylish and easy to clean surface ideal for a kitchen. A double glazed window on the rear aspect provides natural light, with a baton light above the doorway for evening use.

Bathroom

6'10" x 6'9" (2.10 x 2.07)

A newly installed, renovated three piece bathroom services the apartment and provides a bright and practical space to get ready each day. The suite includes a bathtub with overhead shower, a low flush toilet and a sink unit with storage below.

The walls have been boarded and new vinyl tile flooring added, making it easy to maintain and practical to use. A wall mounted light and shaver charger complete the well-designed contemporary bathroom.

Bedroom

14'10" x 8'9" (4.53 x 2.67)

A spacious double bedroom offers a comfortable space to retire to and relax each evening. There is ample room on the carpeted floor for a double bed, surrounded by fitted storage including wardrobes, drawer units, a dressing table and overhead cupboards so there no shortage of space to keep clothing and accessories. A double glazed window on the rear aspect provides plenty of natural light with two wall lights for the evenings. An electric radiator sits against the wall, completing the welcoming sleeping space.

Store Room

5'6" x 2'10" (1.70 x 0.88)

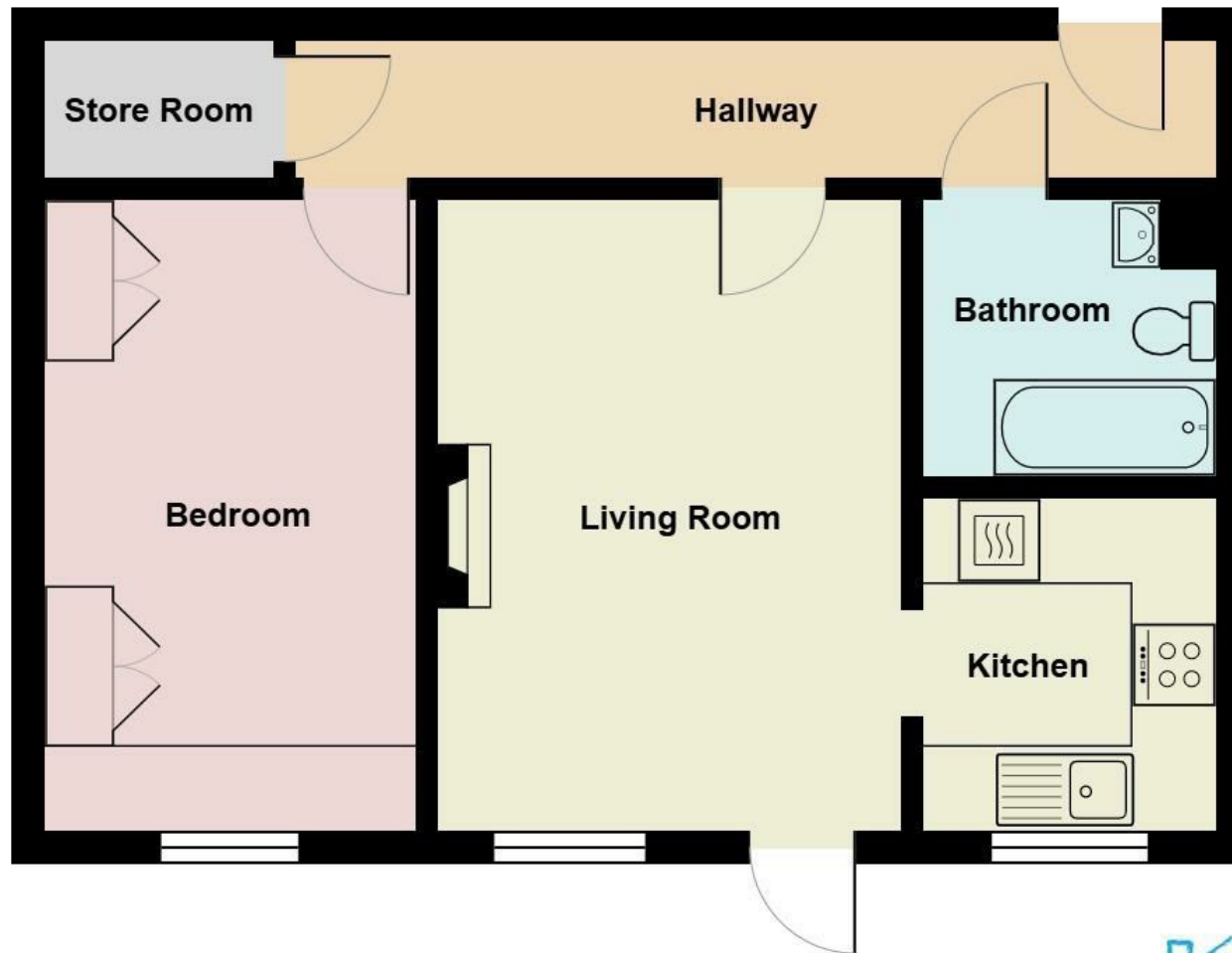
A deep store room at the end of the hallway offers space for household gadgets and bulky items. A hanging rail and shelving means it is also great for storing outdoor clothing and accessories, keeping the rest of the home clear and clutter free. The hot water tank for the property is housed at the rear of the room, with utility meters and the modern consumer unit on the wall.

Additional Information

Leasehold (90 years remaining) - Service charge £240/month.
Ground rent £100/year.







Energy Efficiency Rating		
	Current	Possible
Very energy efficient - lower running costs		
(92 plus) A		
(81-91) B		
(69-80) C		
(55-68) D	66	75
(39-54) E		
(21-38) F		
(1-20) G		
Not energy efficient - higher running costs		
England & Wales		EU Directive 2002/91/EC

Your Award Winning Houseclub

