



Ross Road | London | SE25 6TL

£440,000

 **MovingInn**
sales, lettings & management

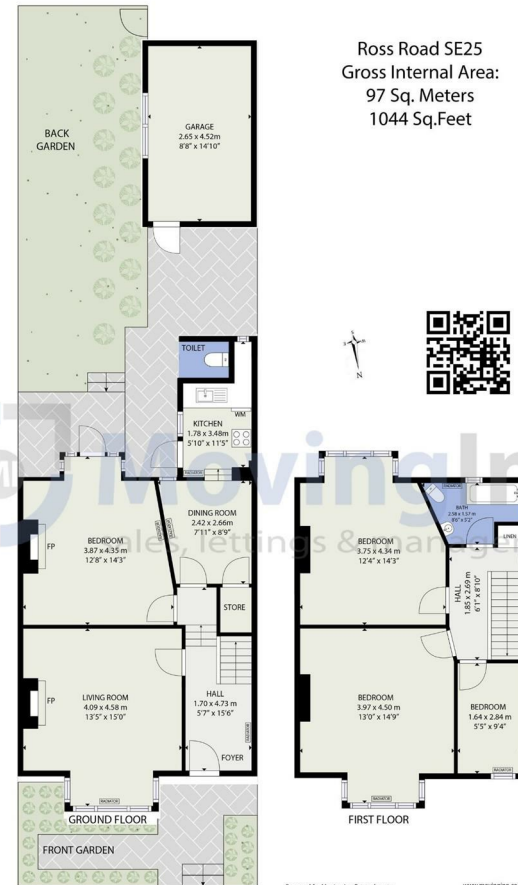
Ross Road |
London | SE25 6TL
£440,000

Nestled on the charming Ross Road in South Norwood, SE25, this spacious terraced house presents an excellent opportunity for those seeking a spacious family home or an investment. Spanning an impressive 1,044 square feet, the property boasts three well-proportioned bedrooms and two inviting reception rooms, providing ample space for both relaxation and entertaining.

The house is situated in a sought-after location, making it an ideal choice for families and professionals alike. While the property is in need of modernization, it offers a blank canvas for potential buyers to create their dream home, tailored to their personal tastes and preferences. The generous layout allows for creative possibilities, ensuring that every corner can be transformed to suit your lifestyle.

Additionally, the property features a garage, a rare find in urban settings. The surrounding area is known for its community spirit and accessibility, with local amenities, parks, and transport links

- Spacious 3-bedroom house
- Terraced house on Ross Road
- In need of modernization
- 1,044 sq ft of space
- Viewing recommended
- Two reception rooms
- Sought after South Norwood
- Includes a garage
- Close to local amenities



Energy Efficiency Rating		Current	Potential
Very energy efficient - lower running costs			
(92 plus)	A		
(81-91)	B		
(69-80)	C		80
(55-68)	D	63	
(39-54)	E		
(21-38)	F		
(1-20)	G		
Not energy efficient - higher running costs			
England & Wales		EU Directive 2002/91/EC	

Council Tax Band D
EPC Rating D

467 Norwood Road
West Norwood
London
SE27 9DJ
02087610830
dean@movinginn.co.uk
www.movinginn.co.uk