



## SALTOUN ROAD, SW2

£399,950

One Double Bedroom  
Share Of Freehold  
Secure Gated Entry  
Period Property  
Open Plan Living  
Energy Rating: C

@marshandparsons  
marshandparsons.co.uk

MARSH &  
PARSONS



# ABOUT THE PROPERTY

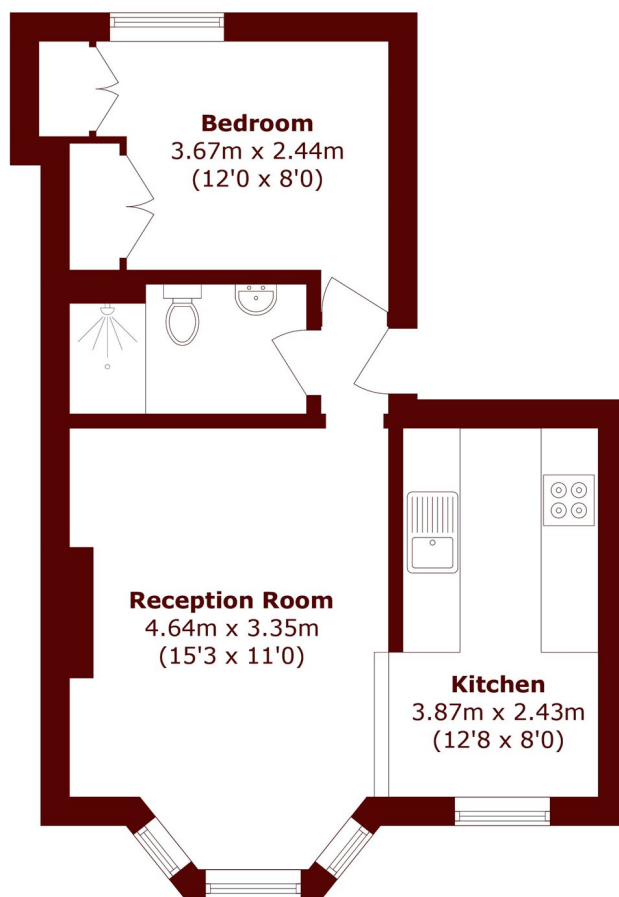
A superb one bedroom flat set within a handsome period property comprising a bright open plan kitchen/reception room boasting a well equipped kitchen, a large bay window and a feature fireplace.

The property also boasts a generous bedroom with wardrobes and a modern bathroom.

Saltoun Road is a popular tree lined residential street situated in the heart of Brixton close to the vast array of independent shops, cafes, bars and restaurants of central Brixton alongside the excellent transport links into central London via Brixton Underground (Victoria Line),



# STEP INSIDE SALTOUN ROAD



Total area (approx.): 36.7 sq. m (395.0 sq. ft)

**Brixton**  
020 7733 4595

Energy Rating: C We aim to make our particulars both accurate and reliable. However, they are not guaranteed; nor do they form part of an offer or contract. If you require clarification on any points then please contact us, especially if you're traveling some distance to view. Please note that appliances and heating systems have not been tested and therefore no warranties can be given as to their good working order

**MARSH &  
PARSONS**