



Guide Price
£450,000

Freehold

2x  1x  1x 

**Hazlemere Road,
Seasalter, Whitstable,
Kent, CT5**

OVER 60?

Secure this property
for up to **59% less!**

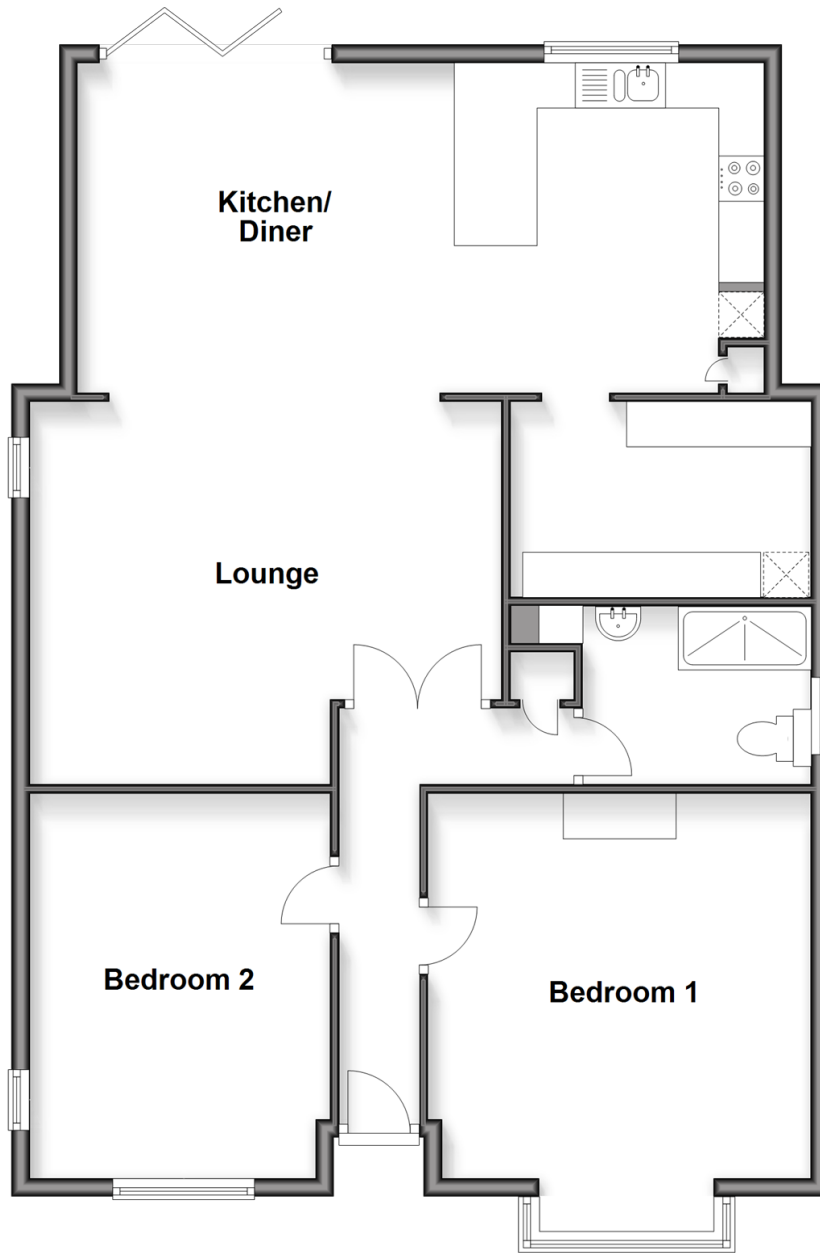


Virtual Reality Tour available

Wards
Helping you move forwards

Ground Floor

Approx. 102.4 sq. metres (1102.6 sq. feet)



Accommodation

GROUND FLOOR

Entrance Hallway

Bedroom 1: 16'6 x 14'0 (5.03m x 4.27m)

Bedroom 2: 14'0 x 13'9 (4.27m x 4.19m)

Shower Room

Lounge: 14'0 x 13'9 (4.27m x 4.19m)

Kitchen/Diner

Utility Room: 14'0 x 11'6 (4.27m x 3.51m)

OUTSIDE

Driveway

Rear Garden



Main features

- Beautiful single storey extension to the rear provides a bright and airy kitchen/diner
- Generous utility room
- Large driveway with ample parking space
- Front and rear gardens
- Situated on a quiet and popular road in Seasalter



Nearest Schools

Primary Schools: Joy Lane Primary 0.5 miles, Whitstable Junior School 1.0 miles, Whitstable and Seasalter Endowed C of E Junior School 1.1 miles

Secondary Schools: The Whitstable School 1.3 miles, Kent



Transport Information

Train Stations: Whitstable 1.4 miles, Chestfield & Swalecliffe 2.7 miles, Herne Bay 4.9 miles



Address

Hazlemere Road, Seasalter, Whitstable, Kent, CT5



Directions

For directions to this property please contact us.



Wards
Helping you move forwards

Call Whitstable Branch 01227 772272 ■ wardsofkent.co.uk



- Legal advice should be taken to verify fixtures/fittings, planning, alterations and/or lease details
- Appliances & services are untested, dimensions are approximate and floor plans are not to scale
- Through a Homewise Home For Life Plan people aged 60+ can secure this property for up to 59% less, by purchasing a Lifetime Lease



12033824/20260110/AR/NF