



Ariel Road NW6

Parkheat  
*Sold on Service*





## **Ariel Road, NW6**

### **£350,000**

### **Share of Freehold**

- Lovely one bedroom apartment
- Set within a Victorian period conversion
- First floor
- Modern open plan kitchen/living area
- Bedroom with fitted storage
- Contemporary three piece shower room
- Convenient location to West Hampstead transport links (West Hampstead Underground, Overground and Thameslink stations)
- Well positioned for the excellent selection of cafés, restaurants, boutiques and local amenities of West Hampstead
- Chain free
- EPC Rating: C, Council Tax: Camden band C

Belsize Park/Hampstead  
208 Haverstock Hill  
NW3 2AG  
Sales 020 7431 1234  
Lettings 020 7431 3104  
[nw3@parkheath.com](mailto:nw3@parkheath.com)

South/West Hampstead  
192 West End Lane  
NW6 1SG  
Sales & Lettings  
Tel 020 7794 7111  
[192@parkheath.com](mailto:192@parkheath.com)

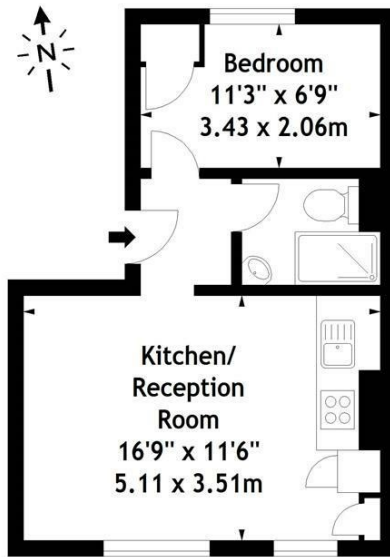
Property Management  
192 West End Lane  
NW6 1SG  
020 7433 6174  
[pm@parkheath.com](mailto:pm@parkheath.com)

[www.parkheath.com](http://www.parkheath.com)

**Parkheath**  
*Sold on Service*

**Camden Tax band C**

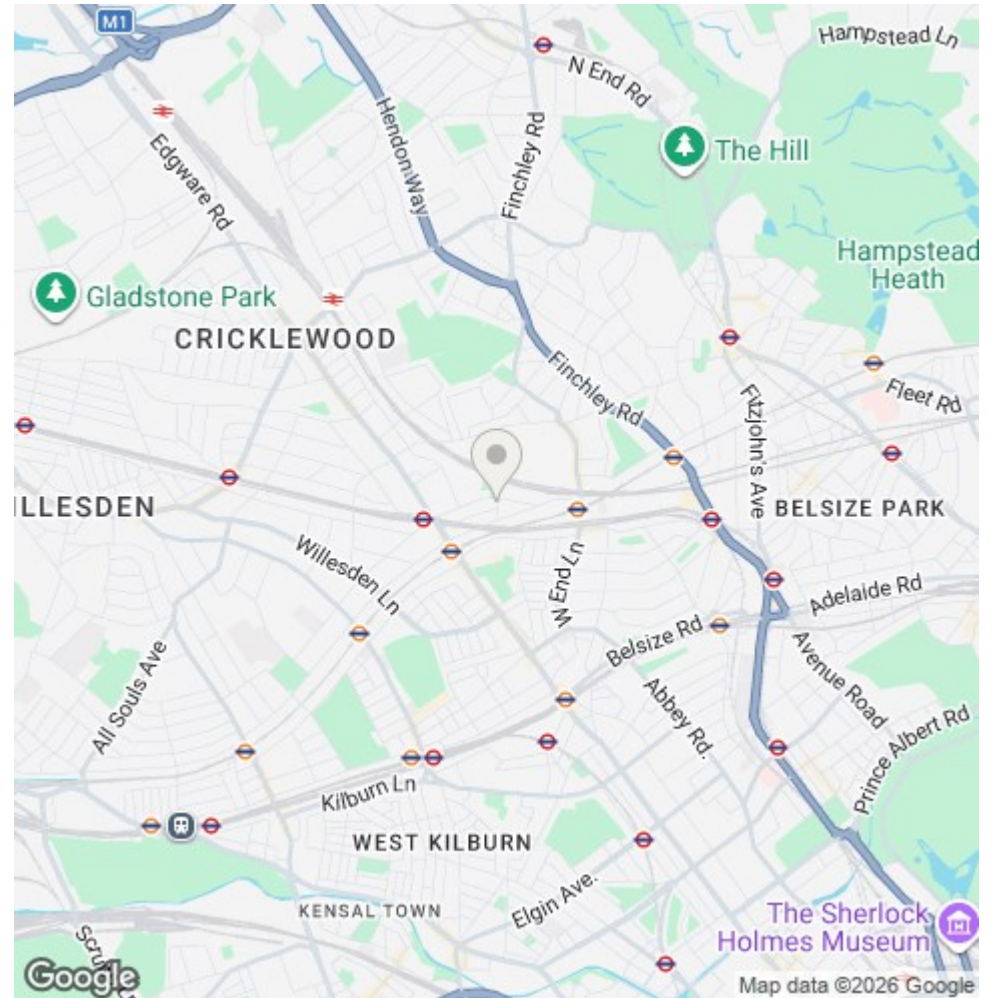
Ariel Road, NW6  
Approx. Gross Internal Area  
336 Sq Ft - 31.21 Sq M



First Floor

Measured in accordance with RICS guidelines. Every attempt is made to ensure accuracy, however all measurements are approximate. This floor plan is for illustrative purposes only and is not to scale.

© Datography Ltd 2014  
Photographs \* Floorplans \* Virtual Tours  
Tel: 0845 643 4401 [www.datography.com](http://www.datography.com)



The particulars do not constitute part of an offer or contract. The particulars, including text, photographs and plans, are for the guidance only of prospective purchasers/tenants and must not be relied upon as statements of fact. The descriptions provided therein represent the opinion of the author and whilst given in good faith should not be construed as statements of fact. Nothing in these particulars shall be deemed a statement that the property is in good condition or otherwise or that any services or facilities are in good working order. All measurements are approximate