



Emerald House, London W3

Price £2,100 per month - Furnished





Description

Experience the epitome of modern living in this exquisite brand new one-bedroom, one-bathroom apartment, ideally located in the thriving community of Acton. This meticulously crafted residence represents the perfect fusion of contemporary design and practical functionality, offering an exceptional living experience for young professionals, couples, or anyone seeking a stylish urban retreat.

The sophisticated open-plan living space maximizes every square foot through intelligent design, creating a seamless flow between the living, dining, and kitchen areas. Large windows bathe the interior in abundant natural light while providing pleasant views of the communal gardens. Premium laminate flooring extends throughout the main areas, enhanced by carefully selected colour palettes that emphasize the sense of space and airiness.

The contemporary kitchen features sleek modern cabinetry with soft-close mechanisms, complemented by durable worktops that offer both practicality and aesthetic appeal. Essential integrated appliances include a dishwasher, oven, hob, refrigerator-freezer, and washer-dryer unit, all chosen for their efficiency and space-saving design. Clever storage solutions ensure maximum functionality without compromising the clean, uncluttered aesthetic.

The well-appointed bedroom provides a peaceful retreat with fitted wardrobes offering generous storage capacity and a large window ensuring plenty of natural light. The space easily accommodates a double bed and additional furniture while maintaining a comfortable, uncluttered environment perfect for rest and relaxation.

The stylish bathroom showcases contemporary design elements including modern ceramic tiles, a space-efficient three-piece suite with overhead shower, floating vanity with integrated lighting, and high-quality fixtures throughout. Additional amenities include secure building entry, lift access, and energy-efficient heating and lighting systems that contribute to both comfort and sustainability.

This property benefits from Acton's excellent transport connections, with multiple Underground stations providing rapid access to Central London, along with abundant local amenities including shopping centres, restaurants, parks, and recreational facilities.



- One spacious bedroom
- Private balcony
- Concierge service
- Residents' Gym
- En-suite bathroom

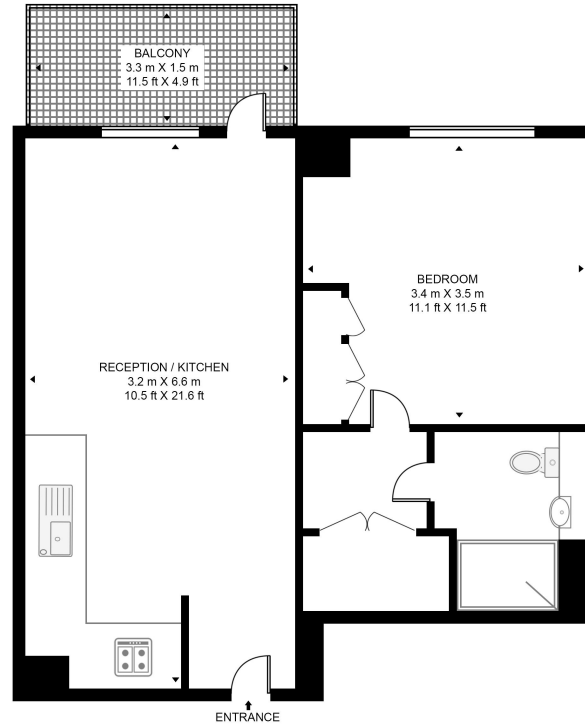
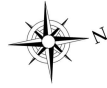
- Open plan kitchen/living space
- Large family bathroom

Floorplan

454 sq ft | 42 sq m

EMERALD HOUSE

APPROXIMATE GROSS INTERNAL FLOOR AREA 454 SQ.FT (42.2 SQ.M)



FOURTH FLOOR



This floor plan has been defined by the RICS Code of Measurement. This floor plan and all others are for approximate representative purposes only and upon usage is agreed to as such by the client.
WWW: hdvirtualart.com | TEL: 0203.974.1567 | EMAIL: info@hdvirtualart.com

Kew Bridge
12 Capital Interchange Way,
London TW8 0SP
020 3147 1880
lettingskewbridge@jll.com

Urban living, your way.

jll.co.uk/residential

© 2019 Jones Lang LaSalle IP, Inc. All rights reserved. All information contained herein is from sources deemed reliable; however, no representation or warranty is made to the accuracy thereof.

