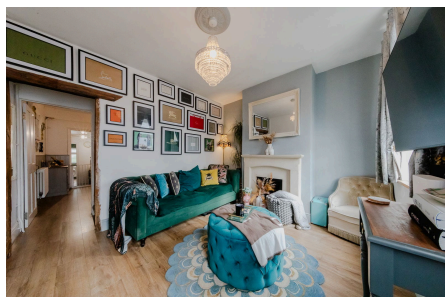


39 Thompson Street, New Bradwell

Offers In Region Of £250,000

🛏 2 🚿 1 🚗 1



A charming two-bedroom Victorian terrace in the heart of New Bradwell, offering a well-arranged layout, two equal-sized double bedrooms and a lovely rear garden. Ideally located within walking distance of local shops, schools, canal-side walks and Wolverton train station.

Key Features

- Victorian/Edwardian home dating back to early 1900's
- Council Tax Band - B
- 59m² = 635 Sq Ft
- Vendors Are Relocating
- Current Owners Since 2018
- Approx. monthly utility bills = £150.00
- Two Double Bedrooms
- REF: AJ1276



Total area: approx. 59.0 sq. metres (635.4 sq. feet)

Floor plans are for illustrative purposes only and should be treated as general guidance. Dimensions are approximate to give a general indication of the floor layout only.
Plan produced using PlanUp.