



4 The Close, Off Huggetts Lane, Eastbourne, BN22 0LJ

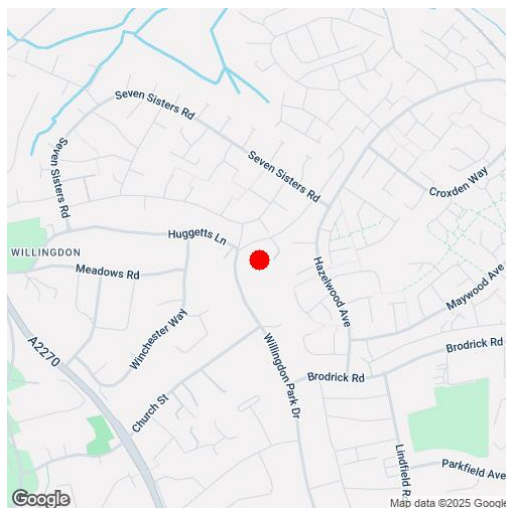
Price £749,950 | Freehold

LS Leaper
Stanbrook

TOWN CENTRE OFFICE
01323 416716

MEADS STREET OFFICE
01323 737962

An attractive four bedroom detached house boasting two detached double garages set within approximately half an acre of secluded grounds and gardens in the much sought after Willingdon area. This exceptional property is set well back from the road and is accessed via electric metal gates which lead to a long sweeping driveway. This delightful property enjoys an elevated position with distant views across towards Heathfield, Hastings and Butts Brow. Accommodation comprises spacious entrance hall, modern kitchen with range of matching wall and base units along with area of work surface, pleasant sitting room with log burner, dining room, ground floor study/4th bedroom, ground floor bathroom with suite comprising panelled corner bath with shower above, wash hand basin and low level wc, first floor landing, three good size bedrooms and a separate wc. A particular feature is the secluded extensive gardens and grounds principally laid to lawn with a variety of plants, shrubs and trees. The property has the unique benefit of having two separate detached double garages, one of which previously had planning permission to create a self contained annexe. Additional benefits include double glazing, gas central heating and the additional benefit of solar panels. An internal viewing is highly recommended to appreciate the many merits of this fine property.





At a Glance:

- Attractive detached house
- Secluded and quiet position in Willington
- Two double garages
- Extensive secluded gardens of approximately half an acre
- Sitting room with log burner
- Dining room
- Modern kitchen
- Study/4th bedroom
- Bathroom/wc
- Double glazing and gas central heating

Accommodation:

ENTRANCE HALL

SITTING ROOM

16'6" (5.03m) x 12'1" (3.68m)

DINING ROOM

13'6" (4.11m) x 12'1" (3.68m)

KITCHEN

12'1" (3.68m) x 10'5" (3.18m)

STUDY/FOURTH BEDROOM

11'6" (3.51m) x 8'6" (2.59m)

BATHROOM

FIRST FLOOR LANDING

BEDROOM 1

20'2" (6.15m) Max x 13'4" (4.06m)

BEDROOM 2

12'8" (3.86m) Max x 10'9" (3.28m) Min

BEDROOM 3

11'8" (3.56m) Max x 11'3" (3.43m) Max

WC

OUTSIDE:

EXTENSIVE SECLUDED GARDENS TO THE FRONT & REAR

TWO DETACHED DOUBLE GARAGES

LARGE DRIVEWAY

COUNCIL TAX:

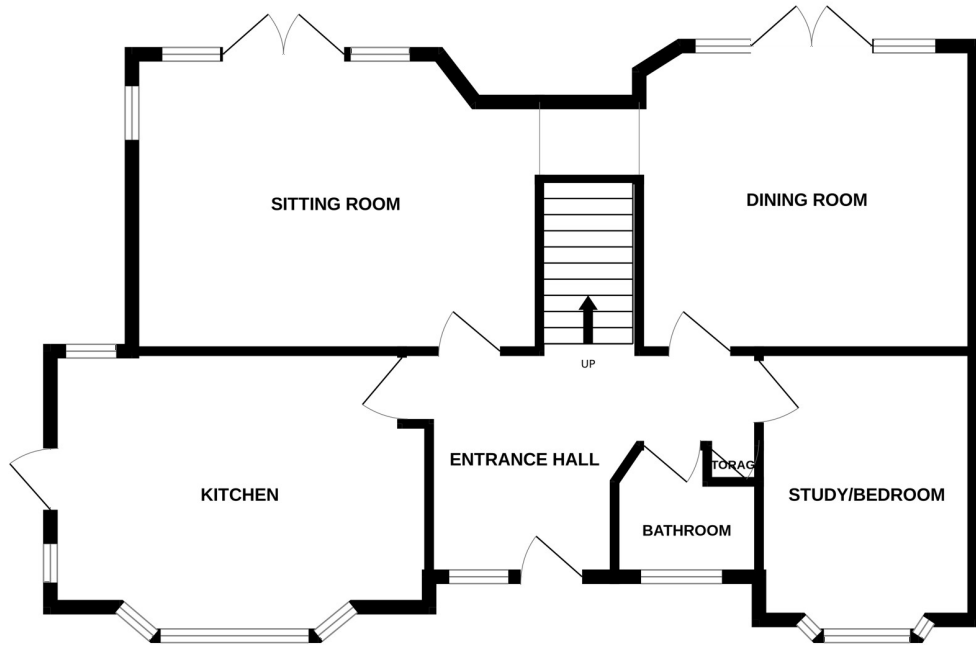
"F"

EPC:

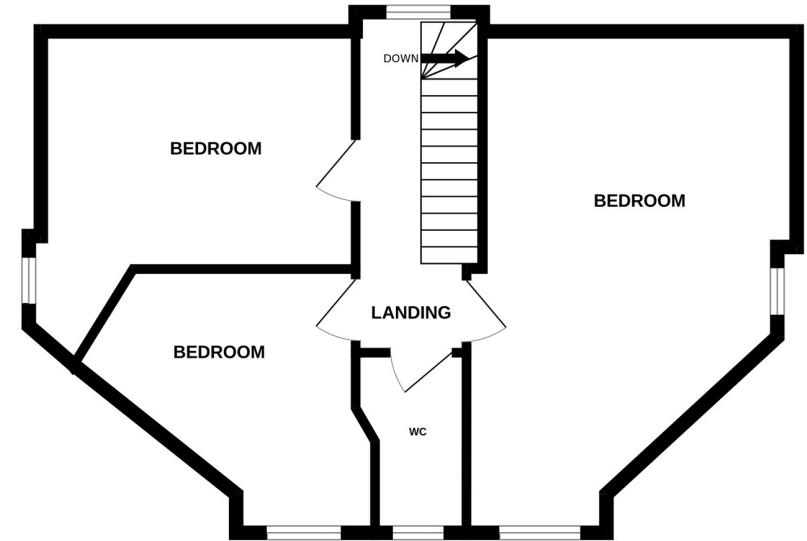
"C"



GROUND FLOOR



1ST FLOOR



Whilst every attempt has been made to ensure the accuracy of the floorplan contained here, measurements of doors, windows, rooms and any other items are approximate and no responsibility is taken for any error, omission or mis-statement. This plan is for illustrative purposes only and should be used as such by any prospective purchaser. The services, systems and appliances shown have not been tested and no guarantee as to their operability or efficiency can be given.
Made with Metropix ©2025

Ref: 1

Whilst every care has been taken in the preparation of these particulars, neither the agents nor the vendor accept any responsibility for error or omission, nor do they constitute an offer or contract. Please note we have not tested any apparatus, fixtures, fittings, or services. Interested parties must undertake their own investigation into the working order of these items. All measurements are approximate whilst photographs and floorplans are provided for guidance only.



5 Gildredge Road, Eastbourne BN21 4RB
01323 416716

28 Meads Street, Eastbourne BN20 7QY
01323 737962

website
www.leaperstanbrook.co.uk

email
sales@leaperstanbrook.co.uk