



15 Rosslyn Street  
York, YO30 6LG  
£1,100 PCM

 2  1  1  C

**\*\*AVAILABLE NOW\*\***

Located in the popular Clifton area of York, just a short walk from the city centre. This property comprises of a spacious open plan living and dining area leading to a modern kitchen located towards the rear of the property. Finally, moving through the property you will find a modern three piece bathroom suite.

Upstairs you will find two double bedrooms, making the property suitable for up to two professional sharers, couples or a small family.

The property also benefits from a small rear yard.

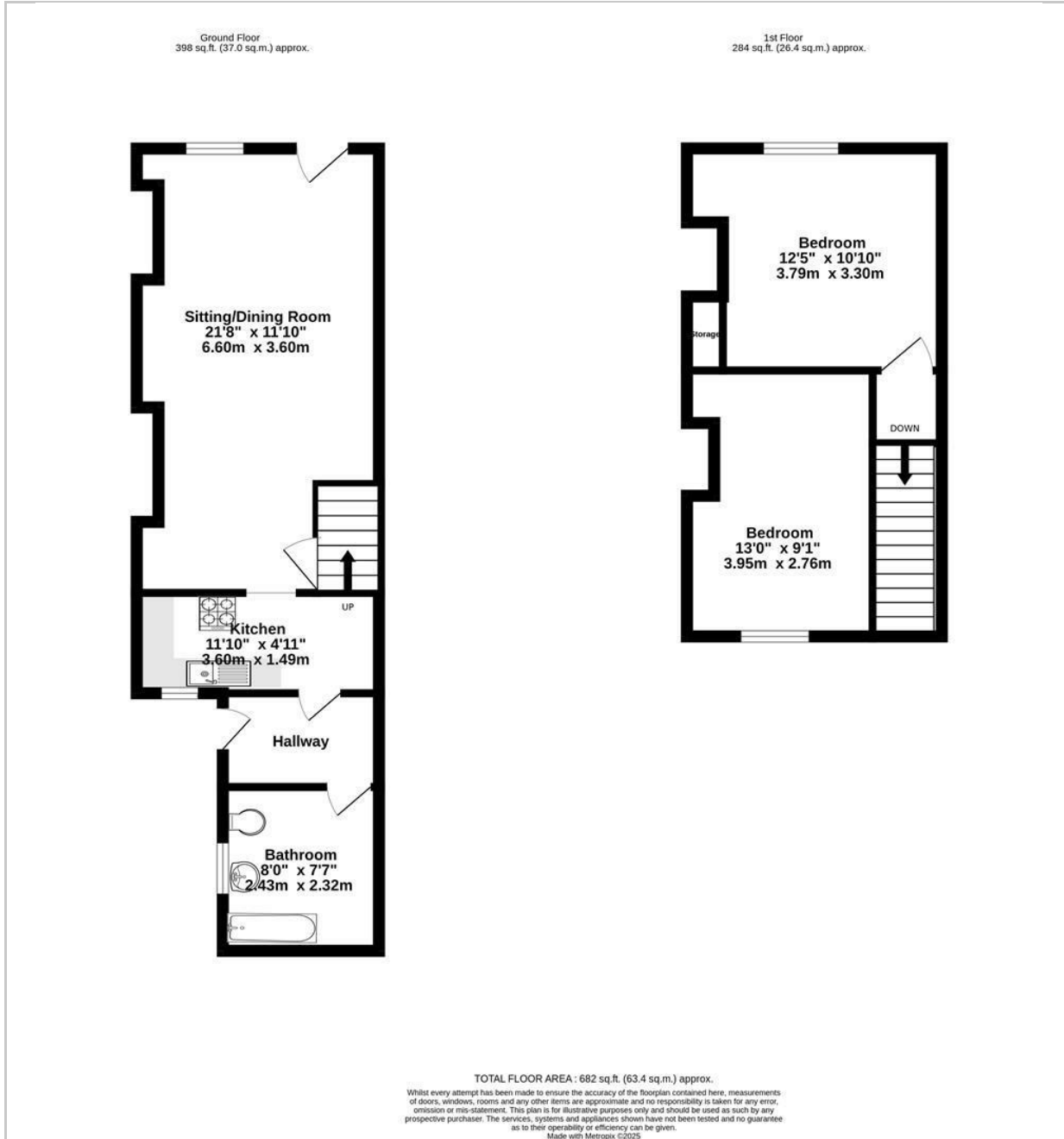
EPC Rating D

Council Tax Band B

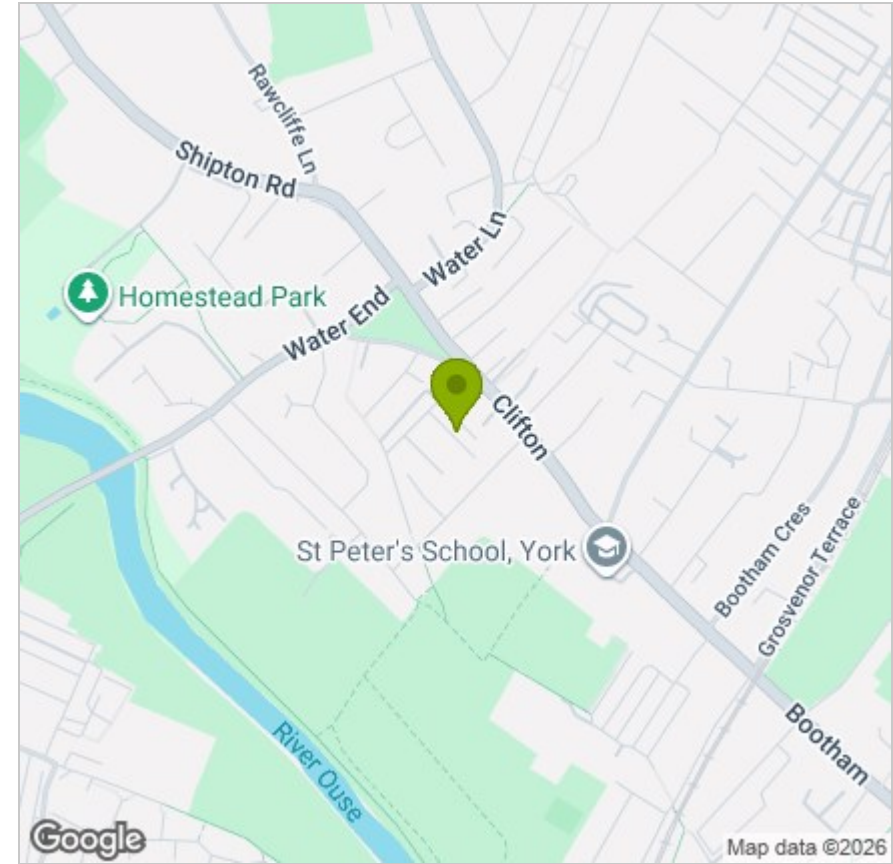




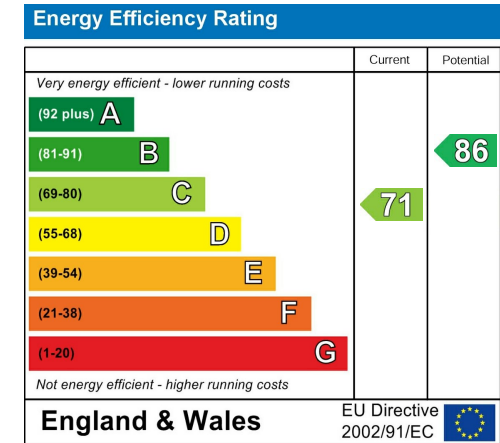
## FLOOR PLAN



## LOCATION



## EPC



These particulars, whilst believed to be accurate are set out as a general outline only for guidance and do not constitute any part of an offer or contract. Intending purchasers should not rely on them as statements of representation of fact, but must satisfy themselves by inspection or otherwise as to their accuracy. No person in this firm's employment has the authority to make or give any representation or warranty in respect of the property.