

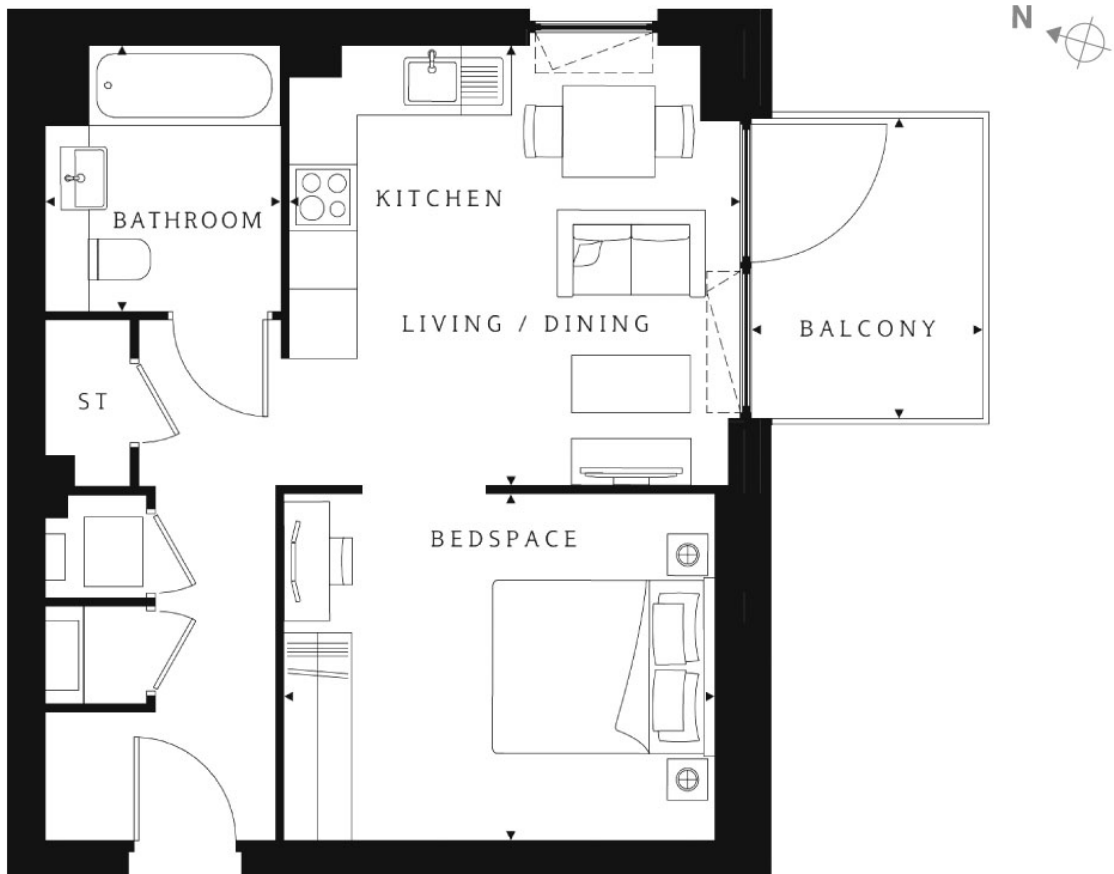
RON LEIGHTON WAY, E6

£1,600 pcm

Studio apartment with 452 sq ft of living space and private south facing balcony overlooking a courtyard. Residents benefit from landscaped gardens. Located close to East Ham Underground.

- Studio Apartment
- Open Plan
- Wood Flooring
- Private Balcony
- Communal Gardens
- Close To Transport

1 bedroom apartment



Approximate gross internal area: 452 sq ft / 41.96 sq m

Whilst every attempt has been made to ensure the accuracy of the floorplan contained here, measurements of doors, windows, rooms and any other items are approximate. No responsibility is taken for any error, omission, or mis-statement. This plan is for illustrative purposes only and should be used as such by any prospective purchaser. The services, systems and appliances shown have not been tested and no guarantee as to their operability or efficiency can be given.
© Copyright LiFE Residential 2021.

LiFE RESIDENTIAL

16 Royal Crest Avenue,
London, E16 2TQ
Sales: 020 3846 3332
Lettings: 020 3846 3311

Energy Rating: B. We aim to make our particulars both accurate and reliable. However they are not guaranteed; nor do they form part of an offer or contract. If you require clarification on any points then please contact us, especially if you're traveling some distance to view. Please note that appliances and heating systems have not been tested and therefore no warranties can be given as to their good working order.