



£110,000

*At a glance...*



1



1



1

EPC

C

COUNCIL  
TAX

B

**holland  
& odam**

Flat 1  
Palace Court  
Silver Street  
Wells  
BA5 1UR

**TO VIEW**

55, High Street, Wells,  
Somerset BA5 2AE

01749 671020

[wells@hollandandodam.co.uk](mailto:wells@hollandandodam.co.uk)



## Directions

From the offices of Holland and Odam continue down the High Street and bear left into Broad Street. Take the next turning left into St Johns Street and then bear right into Southover. Take the next left into Silver Street and Palace Court can be found on the left hand side after c.100 yards.

## Services

Mains electricity, gas, water and drainage are connected. Gas central heating system.

## Local Authority

Somerset Council  
0300 1232224  
somerset.gov.uk

## Tenure

Leasehold  
Lease expires 30/6/2177  
Service/Maintenance Charges - £302.82 per month



## Location

Palace Court is a short walk from the centre of Wells via a private alleyway to Southover. Silver Street is a cul de sac with easy access to the Bishops Palace, Recreation Ground, park and footpaths across countryside nearby.

## Insight

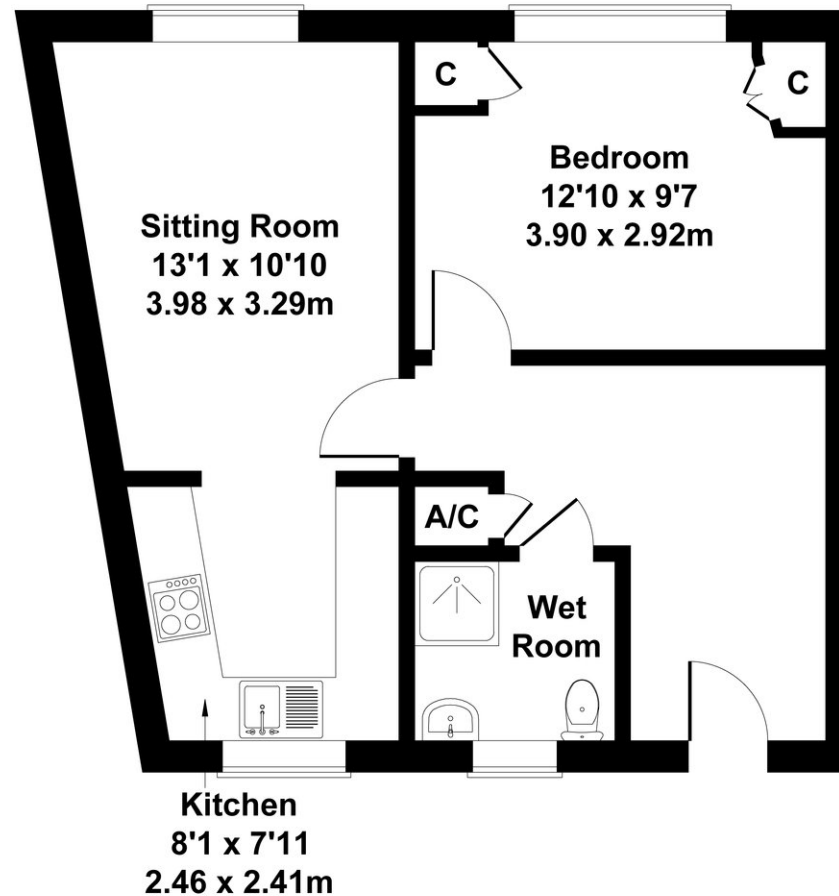
A well presented ground floor flat set in this development for the over 60's. Offered for sale with no onward chain this property is set on the edge of the development and overlooks Palace Farm.

- Ground floor apartment for the over 60's
- Generous sitting room with feature bay window
- Double bedroom with ample storage cupboards
- Spacious wet room
- Gas fired central heating
- Double glazing
- Communal gardens and residents' and visitors' parking
- Residents' lounge and laundry. Guest suite for visitors.
- Close to the Bishops Palace and countryside walks



# Palace Court, Wells

Approximate Gross Internal Area  
484 sq ft - 45 sq m



Not to Scale. Produced by The Plan Portal 2026  
**For Illustrative Purposes Only.**

## DISCLAIMER

CONSUMER PROTECTION FROM UNFAIR TRADING REGULATIONS 2008. The Agent has not tested any apparatus, equipment, fixtures and fittings or services and so cannot verify that they are in working order or fit for the purpose. A Buyer is advised to obtain verification from their Solicitor or Surveyor. References to the Tenure of a Property are based on information supplied by the Seller. The Agent has not had sight of the

title documents. A Buyer is advised to obtain verification from their Solicitor. Items shown in photographs are not included unless specifically mentioned within the sales particulars. They may however be available by separate negotiation. Buyers must check the availability of any property and make an appointment to view before embarking on any journey to see a property.

DATA PROTECTION. Personal information provided by customers wishing to receive information and/or services from the estate agent and the Property Sharing Experts (of which it is a member) for the purpose of providing services associated with the business of an estate agent but specifically excluding mailing or promotions by a third party. If you do not wish your personal information to be used for any of these purposes, please notify us.