

## Farm Lane, SW6

£2,300 Per calendar month

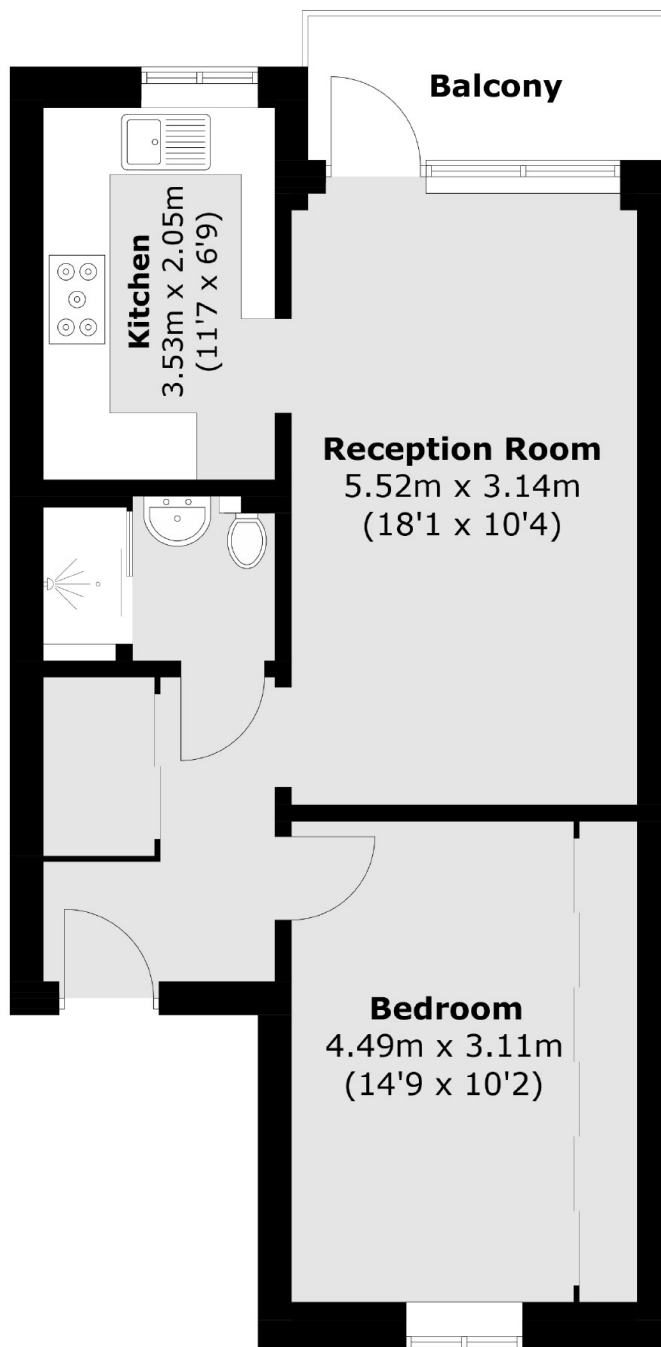
A modern one double bedroom, one bathroom property with a large separate kitchen and a balcony. There is ample storage throughout the property including large built in wardrobes in the bedroom.

Farm Lane is just three hundred meters from Fulham Broadway station (District Line) and all the many shops, bars and restaurants of central Fulham.

### Features

- One Bedroom
- Balcony
- Separate Kitchen
- Modern Interiors
- Built-in Wardrobes
- Fulham Broadway

# Farm Lane, London, SW6



Total area (approx.): 48.8 sq. m (525.3 sq. ft)  
Balcony: 4.2 sq. m (45.2 sq. ft)