



Norbury Rise, SW16
£525,000

Dexters



Norbury Rise, SW16

A three bedroom house with off with huge potential and in need of modernisation, located just 0.6 Miles from Norbury Station.

Norbury Rise enjoys a prime location just 0.6 miles from Norbury train station, providing excellent transport links into Central London. The surrounding area offers a great mix of local amenities, including independent shops, cafés, and supermarkets. Families will appreciate the proximity to reputable local schools and the open green spaces of Norbury Park and Streatham Common, perfect for outdoor activities and weekend walks.

Features

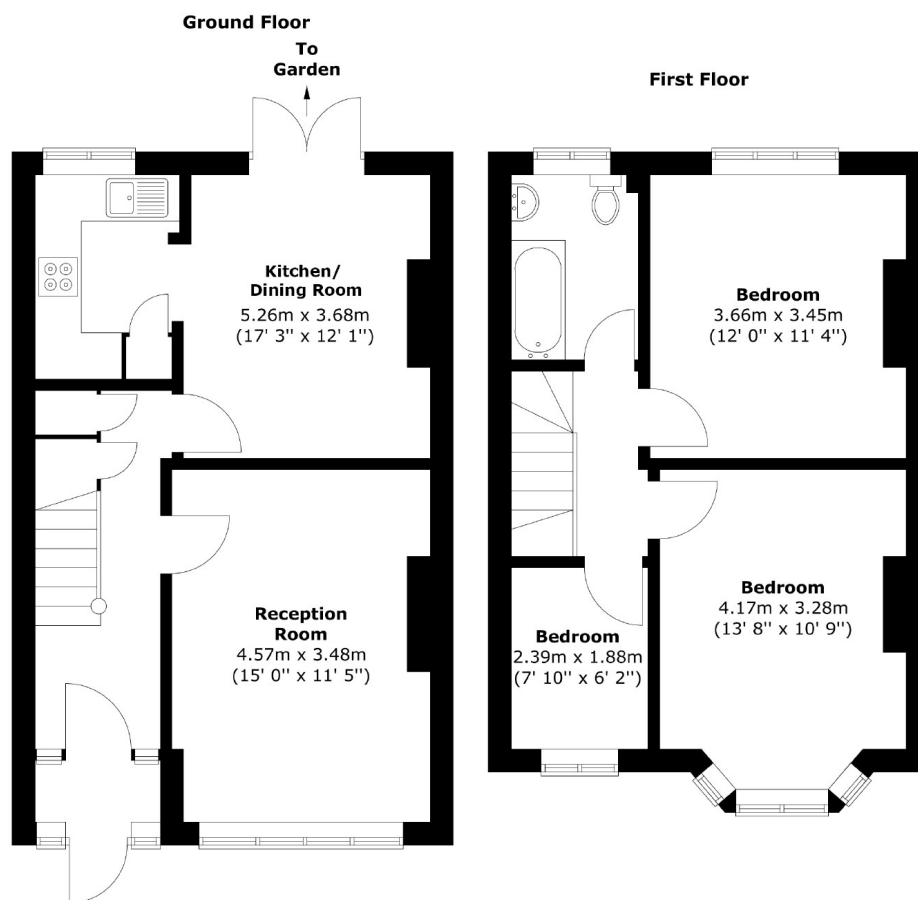
- Three bedrooms
- On-street parking
- Modernisation required
- 0.6 miles to station
- Private garden
- Energy rating: TBC







Norbury Rise, London, SW16



Total area (approx.) : 85.2 sq. m (917 sq. ft)

Dexters

Norbury
1341 London Road
Norbury
SW16 4BE
Sales
020 8629 8028

Energy Rating: . We aim to make our particulars both accurate and reliable. However they are not guaranteed; nor do they form part of an offer or contract. If you require clarification on any points then please contact us, especially if you're traveling some distance to view. Please note that appliances and heating systems have not been tested and therefore no warranties can be given as to their good working order.

 **RICS** | Regulated
Estate Agent
and Letting Agent

[dexters.co.uk](https://www.dexters.co.uk)