



North Mews

London, WC1N

£2,700 per month
(£623.08 per week)

This modern and bright 1 bedroom flat nestled on the tranquil North Mews, right in the vibrant heart of Bloomsbury. Offering a bright open plan living area with Juliet balcony and modern furnishings.

CHESTERTONS



North Mews

London, WC1N

- One Bedroom
- Modern Finish
- Furnished
- Excellent Mews Location

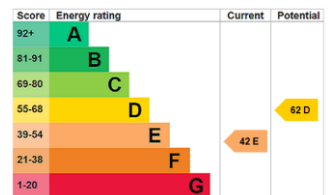


Modern and bright 1 bedroom flat nestled on the tranquil North Mews, right in the vibrant heart of Bloomsbury.

This charming residence offers a bright open plan living area with Juliet balcony that floods the space with natural light. Finished to a high standard throughout and offers contemporary furnishings.

North Mews is conveniently located just off Grays Inn Road with excellent bus routes and close walking distance to Chancery Lane and Farringdon tube stations.

Minimum Term: 12 months
Deposit Required: £0.00
Local Authority: Camden
Council Tax Band: E
EPC Rating: E
Furnished



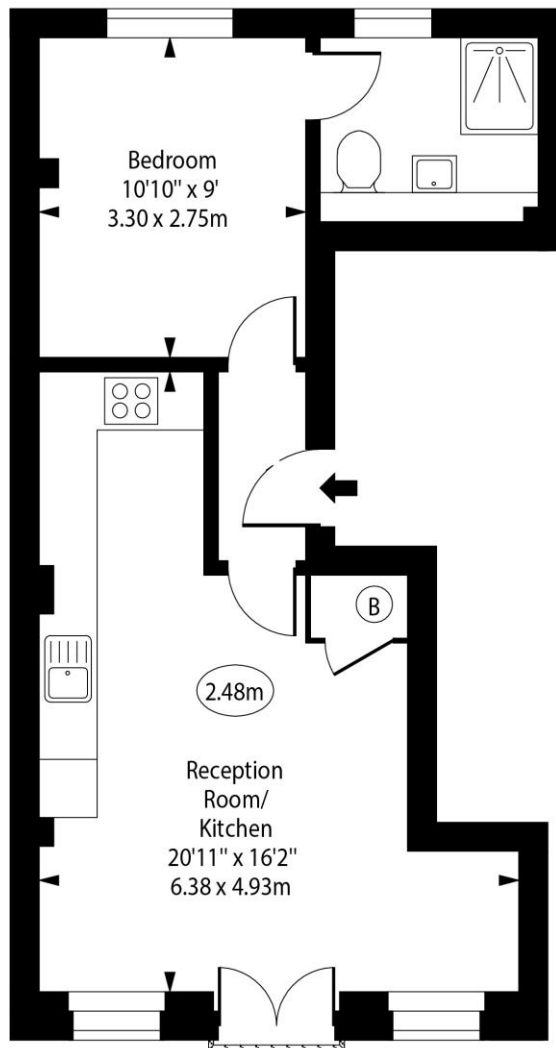
Chestertons Covent Garden Lettings

196 Shaftesbury Avenue
 Covent Garden
 London
 WC2H 8JF
 coventgardenlettingsusers@chestertons.co.uk
 02030408400
 chestertons.co.uk

Additional tenant charges apply (fees apply to non-AST tenancies only)
 Tenancy Agreement Fee: £300
 References per Tenant/Guarantor: £60
 Inventory check (approx. £100 – £250 inc. VAT)
 chestertons.co.uk/property-to-rent/applicable-fees

North Mews

○ - Ceiling Height



First Floor

Approx Gross Internal Area 410 Sq Ft - 38.09 Sq M

Every attempt has been made to ensure the accuracy of the floor plan shown. However, all measurements, fixtures, fittings, and data shown are approximate interpretations and for illustrative purposes only. Measured according to the RICS. Not To Scale.

www.goldlens.co.uk

Ref. No. 031340D

