

SW19

it's all in the postcode...



Arterberry Road
Wimbledon

Monthly Rental Of £2,450

- Two Bedrooms
- Parking
- Unfurnished
- Available from March
- Balcony
- Excellent transport links
- Council tax Band
- EPC Rating D



020 8544 2828

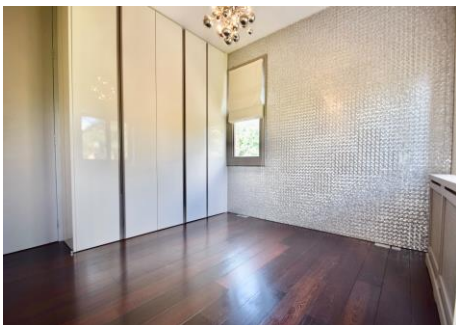
Wimbledon: Wimbledon Park: Colliers Wood

www.SW19.com

SW19 Estate Agents Ltd. Is registered in England & Wales No. 05508737

it's all in the postcode...

A beautifully presented two bedroom apartment, which forms part of this impressive Victorian building. This property boasts a hand crafted kitchen with Granite work surfaces and all appliances, Large lounge/diner with working open fire place, balcony with pretty views, and communal landscaped gardens, modern bathroom with walk in shower. This property also boasts private off street parking space which can be built upon to create a garage. Available from 17th March and unfurnished.



020 8544 2828
Wimbledon: Wimbledon Park: Colliers Wood
www.SW19.com
SW19 Estate Agents Ltd. Is registered in England & Wales No. 05508737

'it's all in the postcode...'

Approximate Gross Internal Area = 66.4 sq m / 715 sq ft

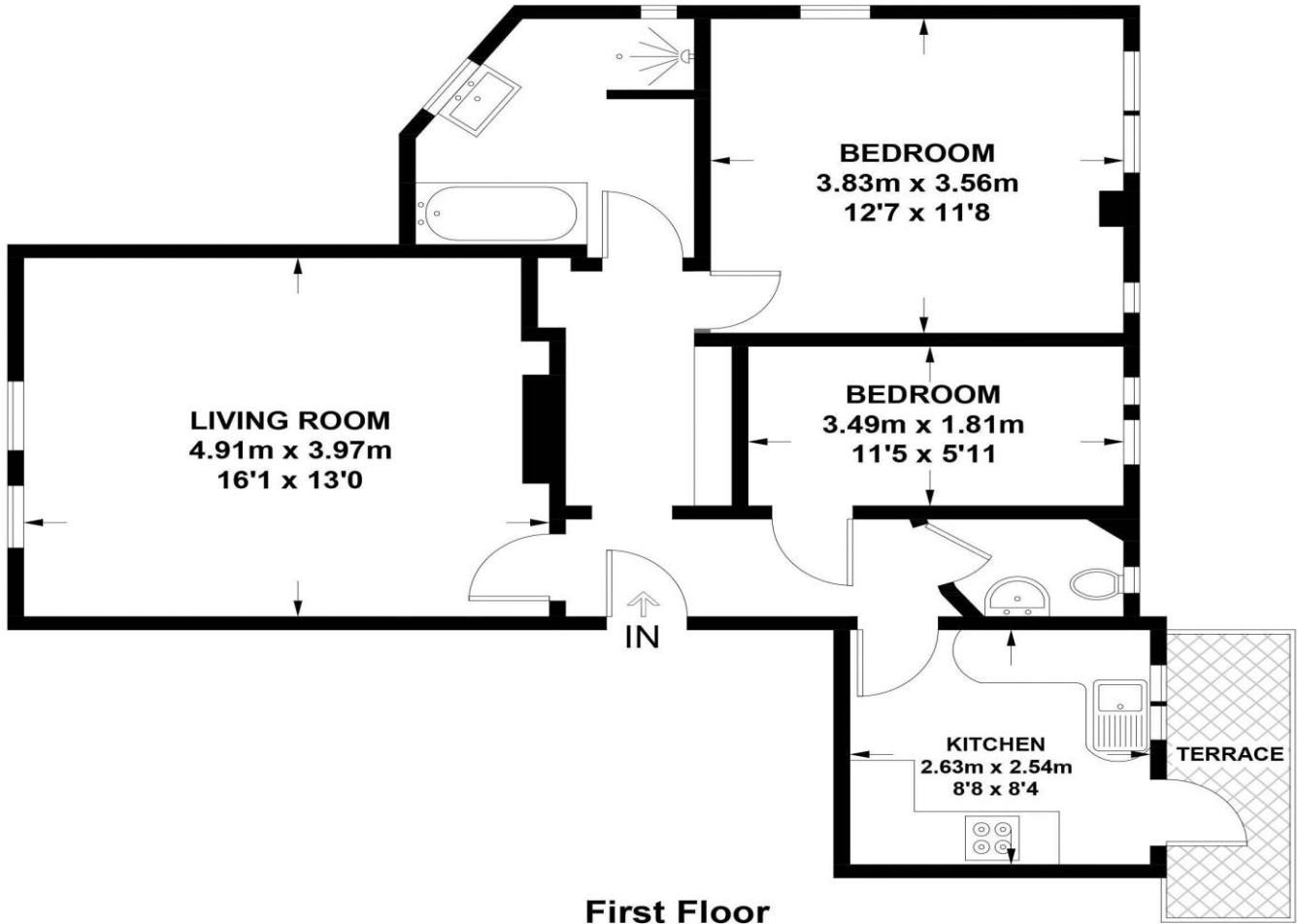


Illustration for identification purposes only, measurements are approximate, not to scale.

These particulars are for guidance only and should not be relied upon as a statement or representation of fact. All measurements given are approximate only and should not be relied upon for ordering carpets, equipment etc. Purchasers should satisfy themselves by inspection or otherwise as to the accuracy of the statements contained within. Neither SW19 estate agents ltd or related companies or their employees can confirm structural conditions of the property or that any appliances or other facilities are in working order. Purchasers are strongly recommended to arrange their own survey.

020 8544 2828
Wimbledon: Wimbledon Park: Colliers Wood
www.SW19.com
SW19 Estate Agents Ltd. Is registered in England & Wales No. 05508737

'it's all in the postcode...'